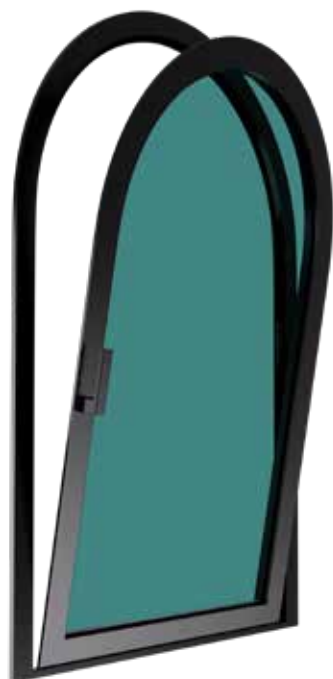


The only range for
Arched & Sloping
tilt-and-turn windows

 **GIESSE** 60
SINCE 1965

FUTURA A & F Euro groove

FUTURA A & F is the only complete system on the market specifically for making arched and sloping aluminium tilt-and-turn windows.



Load capacity

70 kg
(depending on the window geometry)



Adjustments

Lateral = ± 1 mm
Height = $+1.5/-0.5$ mm
Compression = ± 0.3 mm



Easy installation

Pre-assembled hinges and accessories for easy and immediate assembly, even on site.



Opening

Max 180°.



Corrosion resistance

Grade 4 according to standard EN 1670 (>240h salt spray).

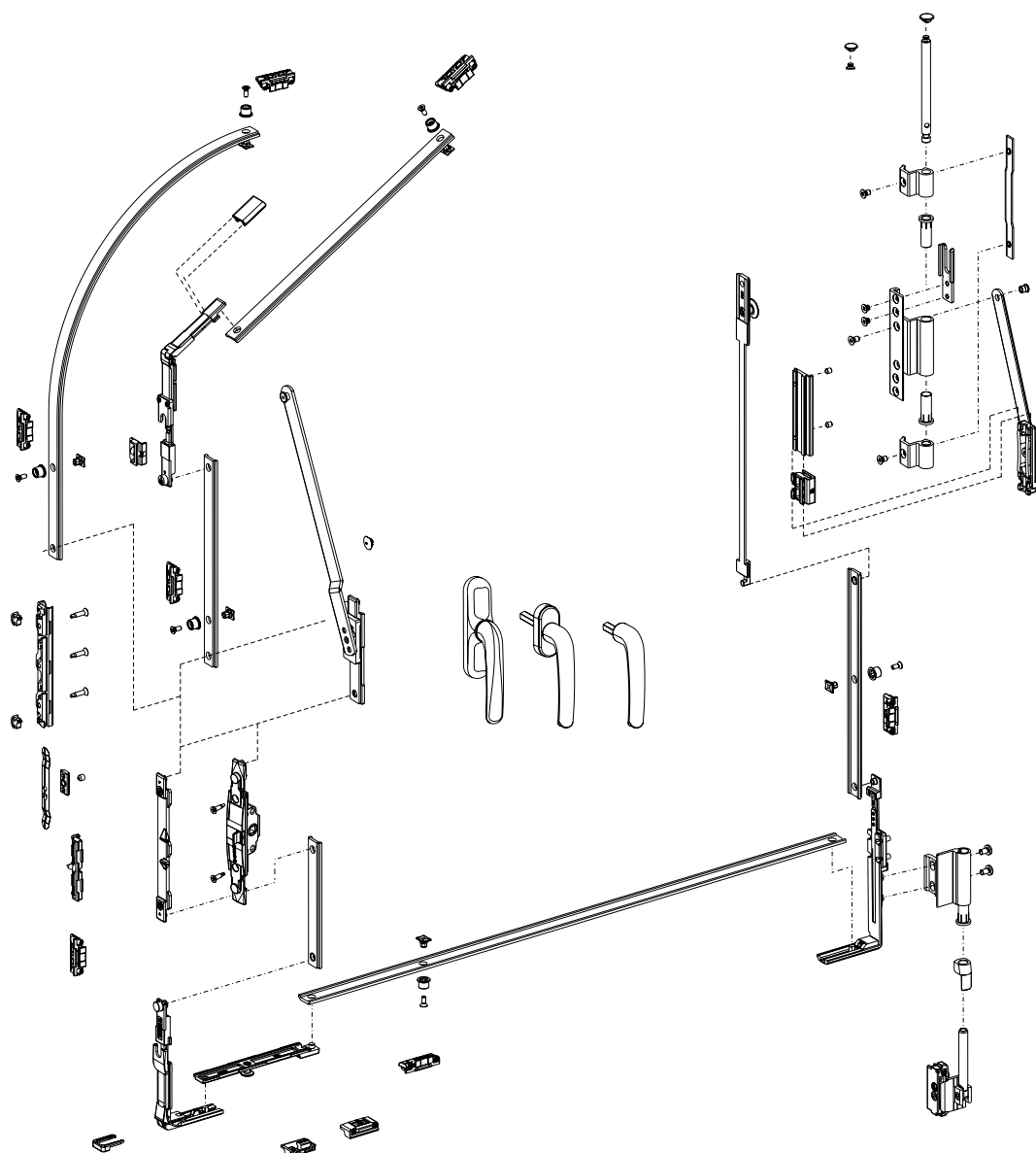


Single mechanism

Same mechanism for both arched and sloped windows.

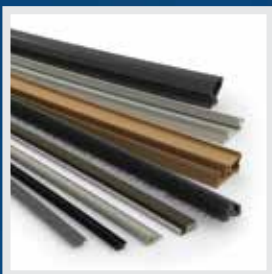
Type	θ - Angle	H - Height (mm)	L - Width (mm)
	$5^\circ \div 40^\circ$	550 - 2500	320 - 1500
	$5^\circ \div 20^\circ$	710 - 2500	320 - 1200
	$20^\circ \div 45^\circ$	870 - 2500	320 - 1000

Refer to the technical sheet for maximum load capacity references.



Go to technical sheet

Code	Description	ARCO arched	FSQ sloped	Notes	pcs./ package
04671K	FUTURA 3D Arched and Sloping tilt-and-turn window mechanism	✓	✓		5
04023K	Variable corner drive	×	✓		10
04301K	Additional arm	✓	✓	L > 1000	5



Schlegel

High performance sealing solutions



GIESSE

Innovative engineered hardware



REGUITTI

Italian design handles



JATEC

Timeless exclusive handles

Quanex

GIESSE S.p.A. Via Tubertini 1, 40054 Budrio (BO), Italia
Tel: +39 051 8850000 | email: info.it@tyman.com



U1087001
3/2025