



Sliding

Solutions for aluminium
windows and doors

Index

Special Sliding

GS3000	5
GS1000	11

Multilock

Champion Plus	17
Top Security	21
Mismo	25

Handles

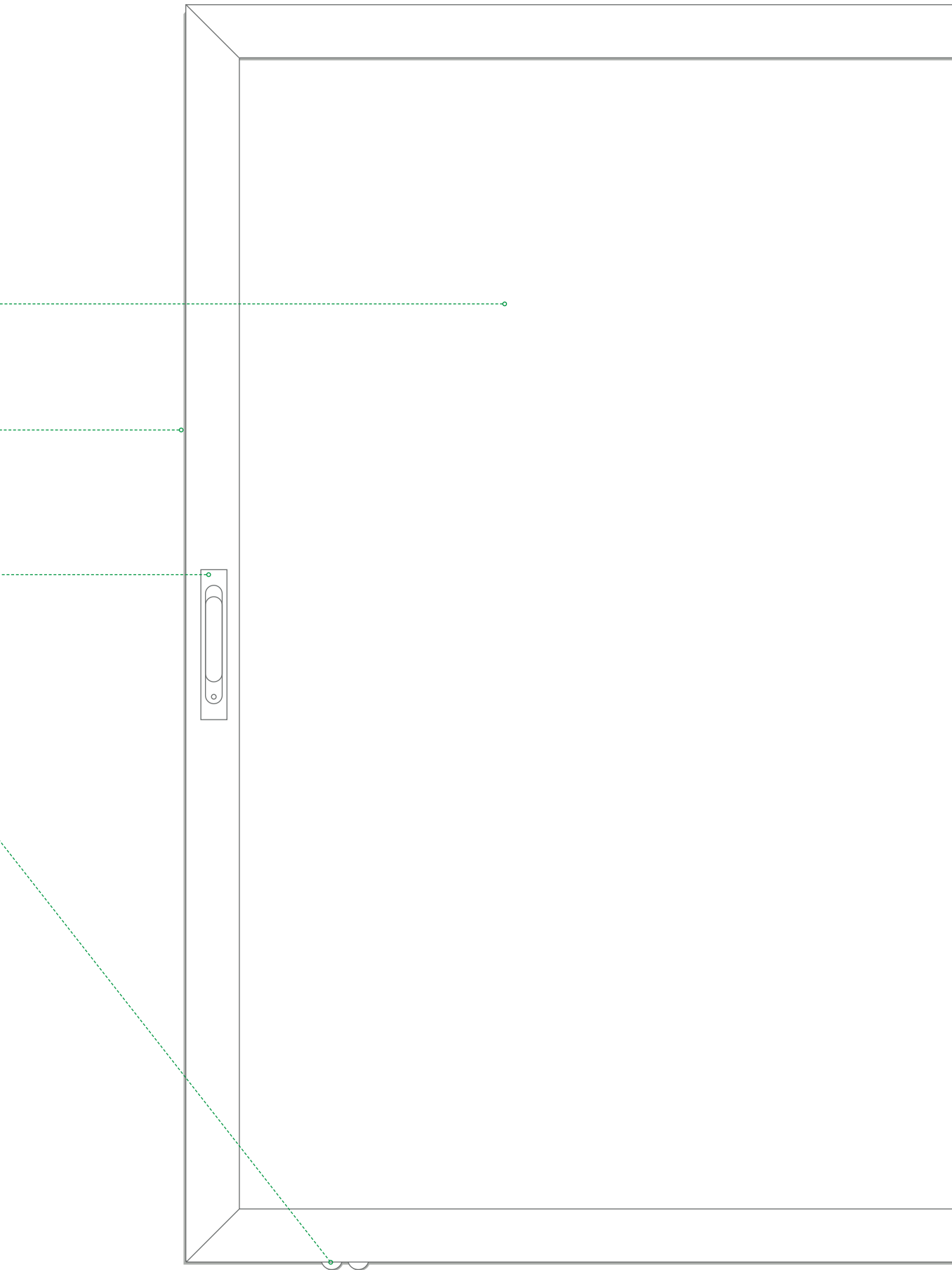
Brio Evo	27
----------	----

Pulleys

Carrera pulleys	31
Aluminium pulleys	33

Seals

	35
--	----



Special sliding
Multilock
Handles
Pulleys
Seals

GS3000

Special sliding

Multilock

Handles

Pulleys

Seals



GS3000 Lift-and Slide

The lift and slide system is the ideal solution for creating large areas of glazing with large, heavy sashes using a multi-point locking system that keeps the weather out securely and effectively.



Large sizes

Available for sashes weighing up to 400 kg with maximum heights of 3750 mm.



Double teeth version

Pawls applied to the frame (standard) or directly on the driving rod (plus).



Reliability and durability

Tested to 25,000 cycles in accordance with EN13126-16:2008*.



Accessibility

Possible lower walkable floor threshold in accordance with the regulations on architectural barriers.



Fluid, silent movement

Mechanisms and pulleys designed to make sash opening easier.



Safety

Optional safety spring dampens pull handle rotation ensuring soft return to position.



Versatile

GS3000 can be applied to the most common series of profiles.



Micro-ventilation

Minimizes condensation and ensures fresh air supply without compromising the temperature.



Design

Three different pull handle styles and numerous finishes. Also compatible with Reguitti Inox pull handles.



Go to **technical sheets**

	SASHES UP TO 400 KG	SASHES UP TO 150 KG
Sash height	1150 – 3750 mm	1150 – 3750 mm
Max sash weight	300 kg (400 kg with two additional pulleys)	150 kg
Pulleys 300/22	For 22 mm slot widths and 42 mm distance from the track	×
Pulleys 150/22	×	For 22 mm slot widths and 30 mm distance from the track
Pulleys 150/18	×	For 22 mm slot widths and 42 mm distance from the track
Driving rods	Sashes with 37.5 mm and 27.5 mm backset	Sashes with 37.5 mm and 27.5 mm backset
Sash width	720 – 3350 mm	600 – 2400 mm
Pull Handles	240 mm handle, 80 mm C/C distance 10 mm square Single tooth and Double teeth versions with and without cylinder compatibility	240 mm handle, 80 mm C/C distance 10 mm square Single tooth and Double teeth versions with and without cylinder compatibility

*Tests performed on the standard version GS3000 with pulleys for sashes up to 300 kg

PULL HANDLES GS3000

These offer a uniform style in all environments when combined with the window and door handles of the same design (Asia, Kora and Prima).

All pull handles have 10 mm square spindle, 80 mm c/c distance and 240 mm handle.



Heavy use

They can be used on sashes up to 400 kg



Primer Base Treatment

Allows the handles to be painted independently in the desired finish



Antigerm

Antibacterial finish available for applications in public buildings such as hospitals and schools

Base Primer



RAL painted



TREND



Highest corrosion resistance: grade 5 according to European standard EN 1670, for use in environments with severe climatic conditions.



Additional information

Find out about all products



Code	Description
0243701	Prima pull handle, Single tooth
0243801	Prima pull handle, Single tooth, compatible with cylinder
0243901	Prima pull handle, Double teeth, compatible with cylinder
0244601	Asia pull handle, Single tooth
02447	Asia pull handle, Single tooth, compatible with cylinder
02448	Asia pull handle, Double teeth, compatible with cylinder
0246801	Kora pull handle, Single tooth
0246901	Kora pull handle, Single tooth, compatible with cylinder
0247001	Kora pull handle, Double teeth, compatible with cylinder
0799501	External recess handle
03978	Sash stop plug
02979	Sash stop plug

PULL HANDLES GS3000

In addition to Giese pull handles, GS3000 can also be combined with Reguitti Inox pull handles for lift and slide systems, offering a wider aesthetic choice.



Toledo



Heavy use

They can be used on sashes up to 400 kg



3 finishes

Black RAL 9005, Satin Stainless Steel 316 L and PVD Gun Metal Stainless Steel



Antigerm

Antibacterial finish available



Additional information

Find out about all products



Oslo



Phoenix



Stoccolma



Genève

POWDER COATED FINISHES



3W Inox PVD
Gun Metal



S5 Stainless
steel 316L



KK Matt Black
RAL 9005

Highest corrosion resistance performance in accordance with **EN 1670 (Grade 5)**.

Highest mark on cross hatch test according to **ISO 2409 (Grade 0)**.

GS3000 - driving rod with key, 80 mm c/c distance

Plus Code	Standard Code	Description	Height	Entrance	Compatible with safety spring
07205	07105	Key driving rod	1700	37.5	no
07206	07106	Key driving rod	1900	37.5	no
07207	0710701	Key driving rod	2000	37.5	yes
07208	0710801	Key driving rod	2300	37.5	yes
07209	0710901	Key driving rod	2600	37.5	yes
07210	0711001	Key driving rod	3000	37.5	yes
07211	07133	Key driving rod	1700	27.5	no
07212	07134	Key driving rod	1900	27.5	no
07213	0713501	Key driving rod	2000	27.5	yes
07214	0713601	Key driving rod	2300	27.5	yes
07215	0713701	Key driving rod	2600	27.5	yes
07216	0713801	Key driving rod	3000	27.5	yes

GS3000 - optional elements

Code	Description
07161	Rod cover extension
07122	Security spring

GS3000 - locking points

Code Plus	Standard Code	Description
	07149	Fixed locking point 13 – 16 mm
	07150	Standard adjustable closing point 13 – 25 mm
	07151	Locking point with micro-vent.
	07152	Locking point for opposing sash
07221		Frame counterplate
07220		Adjustable nib

GS3000 - adapter shims (standard and plus versions)

Code	Description	Kit Composition	Size
07153	Kit of 11 mm shims	10 sash shims + 1 pulley shim	11 mm
07154	Kit of 14 mm shims	10 sash shims + 1 pulley shim	14 mm
07155	Kit of 16 mm shims	10 sash shims + 1 pulley shim	16 mm
07156	Kit of 18 mm shims	10 sash shims + 1 pulley shim	18 mm
07157	Kit of 21 mm shims	10 sash shims + 1 pulley shim	21 mm
07158	Kit of 23 mm shims	10 sash shims + 1 pulley shim	23 mm
07159	Kit of 25 mm shims	10 sash shims + 1 pulley shim	25 mm
07160	Kit of 30 mm shims	10 sash shims + 1 pulley shim	30 mm
07123	Fixed sash spacer (lower cross-beam)		

GS3000 - pulley kit (standard and plus versions)

Code	Description	Slot width	Sash/track distance	Maximum load capacity	Usable rod type
07101	300/22 pulley kit	22 mm	42 mm	300 kg	Usable with driving rods with 27.5 mm and 37.5 mm backset
07102	Additional central 300/22 pulley	22 mm	42 mm	300 kg 400 kg	With one pulley: for sashes > 2500 mm long and 300 kg maximum load capacity With two pulleys: for sashes with 400 kg maximum load capacity
07165	150/18 pulley kit	22 mm	42 mm	150 kg	Usable with driving rods with 27.5 mm and 37.5 mm backset
07166	150/22 pulley kit	22 mm	30 mm	150 kg	Usable with driving rods with 27.5 mm and 37.5 mm backset

GS3000 - pulley connection rods (standard and plus versions)

Code	Description	Rod width	Sash width
07146	900 mm pulley connection rod	900 mm	600 – 1500 mm
07147	1400 mm pulley connection rod	1400 mm	1501 – 2000 mm
07148	1900 mm pulley connection rod	1900 mm	2001 – 2500 mm

GS1000

Special sliding

Multilock

Handles

Pulleys

Seals



GS1000

Tilt-and Slide

GS1000 combines the practicality of a sliding door with the thermal-acoustic insulation typical of a side-hung window. The tilt position offers ventilation, while the sliding movement allows easy opening of the sash without taking up space in the room.



Large sizes

Available for sashes weighing up to 200 kg with maximum heights of 2700 mm.



Automatic latching device

When in closed position, the sash automatically latches into the tilt position.



Wide profiles

Perfectly suitable for very deep thermal break profiles and thick glasses.



Incorrect movement

The device prevents lifting of the sash and the drive of the cremone when the sash is in sliding position.



Versatile

GS1000 can be installed on the most common aluminium profiles for casement openings.



Maximum smoothness

The increased diameter of the trolley wheels guarantees maximum ease when operating the sash.



Minimal dimensions

Only 35 mm space required to attach the bottom rail to the frame.



Go to **technical sheets**

Manual handling with cremone/window handle (Euro groove and R groove)

	GS1000-ML	GS1000-HL
Sash width	630 - 1480 mm	630 - 1680 mm
Sash height	930 - 2400 mm	930 - 2400 mm
Max sash weight	100 kg	160 kg

Semi-automatic handling with special long handle window handle

	GS1000-HD 100	GS1000-HD 160	GS1000-HD 200
Sash width	730 - 1300 mm	730 - 2000 mm	1080 - 2000 mm
Sash height	930 - 2400 mm	930 - 2700 mm	930 - 2700 mm
Max sash weight	100 kg	160 kg	200 kg

GS1000 - manual control handles



	PRIMA	ASIA	KORA	ARIA
SUPRA7 window handle without base	04155	04153	04154	04156
Window handle	02762	02415	Standard 00997 175 mm handle 02466	×
Cremone	Micro-ventilation 01039 With key 0119102	Standard 0304911 Micro-ventilation SKG certified 0099611 Micro-ventilation 0304911	Micro-ventilation 00959	×

43 mm c/c distance Reguitti handles also available

GS1000 - forced control handles



	CREMONE	CREMONE WITH KEY
Right hand	09736N	09738N
Left hand	09737N	09739N

Base Primer



RAL painted



TREND



Highest corrosion resistance: grade 5 according to European standard EN 1670, for use in environments with severe climatic conditions.

GS1000

Code	Description	ML	HL	HD 100	HD 160	HD 200
09776	Single tooth Pulleys Kit RH	✓	✓	✓	✓	✗
09777	Single tooth Pulleys Kit LH	✓	✓	✓	✓	✗
09778	Twin Pulleys Kit RH	✗	✗	✗	✗	✓
09779	Twin Pulleys Kit LH	✗	✗	✗	✗	✓
09780	Hardware Kit	✓	✓	✗	✗	✗
09783	Window Handle Hardware Kit EG	✓	✓	✗	✗	✗
09758	Hardware Kit R40	✓	✓	✗	✗	✗
09781	Hardware Kit LH	✗	✗	✓	✓	✓
09782	Hardware Kit RH	✗	✗	✓	✓	✓
09723	Stay Arm Wing Width=630-930	✓	✓	✓	✗	✗
09724	Stay Arm Wing Width=931-1280	✓	✓	✓	✗	✗
09725	Stay Arm Wing Width=1281-1680	✓	✓	✓	✗	✗
09761	Profiles Kit Range=630-880	✓	✓	✓	✓	✗
09762	Profiles Kit Range=881-1080	✓	✓	✓	✓	✗
09763	Profiles Kit Range=1081-1280	✓	✓	✓	✓	✓
09764	Profiles Kit Range=1281-1480	✓	✓	✓	✓	✓
09765	Profiles Kit Range=1481-1680	✗	✓	✗	✓	✓
09766	Profiles Kit Range= 1681-2000	✗	✗	✗	✓	✓
09768	Top Rail L=6000 mm	✓	✓	✓	✓	✓
09769	Bottom Rail L=6000 mm	✓	✓	✓	✓	✓
09770	Top Cover L=6000 mm	✓	✓	✓	✓	✓
09771	Bottom Cover L=6000 mm	✓	✓	✓	✓	✓
09772	Screw Cover Profile - L=6000 mm	✓	✓	✓	✓	✓
09773	Carriages Connect Rod L=4000 mm	✓	✓	✓	✓	✓

Code	Description	ML	HL	HD 100	HD 160	HD 200
09774	Accessories Kit	✓	✗	✓	✗	✗
09775	Accessories Kit with Side Supports	✗	✓	✗	✓	✓
0979001	Movable Guide Block	✓	✓	✓	✓	✓
09789	Connecting Rod Guide	✗	✓	✓	✓	✓
09759	Additional Arm	✗	✗	✗	✓	✓
09751	Window Handle Mechanism - EG LH	✓	✓	✗	✗	✗
09752	Window Handle Mechanism - EG RH	✓	✓	✗	✗	✗
09785	Strikers Kit EG 10-14	✗	✗	✓	✓	✓
09786	Strikers Kit EG 12-15	✗	✗	✓	✓	✓
09787	Strikers Kit EG 13.5-16.8	✗	✗	✓	✓	✓
09788	Strikers Kit EG 14-18	✗	✗	✓	✓	✓
09736N	Cremone Right	✗	✗	✓	✓	✓
09737N	Cremone Left	✗	✗	✓	✓	✓
09738N	Cremone Right With Key	✗	✗	✓	✓	✓
09739N	Cremone Left With Key	✗	✗	✓	✓	✓
09791	Incorrect Movement Safety Device Set - LH 14/18	✗	✗	✓	✓	✓
09792	Incorrect Movement Safety Device Set - RH 14/18	✗	✗	✓	✓	✓
09793	Incorrect Movement Safety Device Set - EG LH 10/14	✗	✗	✓	✓	✓
09794	Incorrect Movement Safety Device Set - EG RH 10/14	✗	✗	✓	✓	✓
09741N	Template For Cremone Drilling	✗	✗	✓	✓	✓
09801	Drilling Jig For Carriages	✓	✓	✓	✓	✓
09803	Drilling Jig For Corner And Arms	✗	✗	✓	✓	✓
09804	Jig Centring Device	✓	✓	✓	✓	✓
09805	Screw Jig For Rails	✓	✓	✓	✓	✓

CHAMPION PLUS

Special sliding

Multilock

Handles

Pulleys

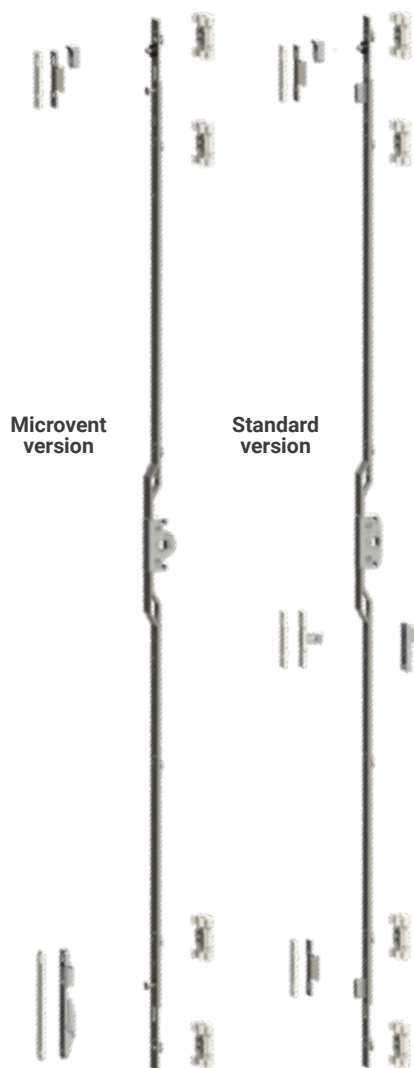
Seals



CHAMPION PLUS

Multilocking system

The Champion Plus hardware system is the ideal solution for multipoint locking for sliding doors. The Champion Plus multi-locking range is available with 1 to 3 locking points, which can be installed on both doors and windows.



200 kg tensile strength

Champion Plus has been tested achieving resistance to strain values up to 200 kg for each locking point.



Easy installation

The rod is easily and quickly fitted to the profile using a special fixing kit.



Corrosion resistant

The surface treatments used ensure high corrosion resistance (Class 4 - EN 1670-2008).



Wide range

Rods are available in different lengths, they can easily adapt to the different sizes of windows or doors.



Family feeling

Handles in the same style as the Giesse cremones and handles used on other windows and doors.



Micro-ventilation

Minimizes condensation and ensures fresh air supply without compromising the temperature.



Incorrect movement

Prevents the system from reverting to the lock position, thus protecting the components from accidental knocks.



Go to
**technical
sheets**

CHAMPION PLUS MICROVENT

with micro-ventilation

- Rod length 600-1600 mm (2-3 locking points)
- 7.5 or 15 mm backset
- Steel lift-proof pin with integrated damper
- Galvanized zamak housing and rotor
- Stainless steel pawl

CHAMPION PLUS

with optional incorrect movement safety device

- Rod length 270-1800 mm (1-3 locking points)
- 7.5 or 15 mm backset
- Steel lift-proof pin with integrated damper
- Galvanized zamak housing and rotor
- Galvanized zamak pawl

Champion Plus - rods

Code	Backset	Cylinder setup	Micro ventilation	Rod height	Locking points	Incorrect movement device
06334000	7.5	×	✓	600 mm	2	×
06335000	7.5	×	✓	1000 mm	2	×
06336000	7.5	×	✓	1600 mm	3	×
06337000	15	×	✓	600 mm	2	×
06338000	15	×	✓	1000 mm	2	×
06339000	15	×	✓	1600 mm	3	×
06340000	15	✓	✓	1600 mm	3	×
0272000001	7.5	×	×	270 mm	1	×
0272100001	7.5	×	×	600 mm	2	02770
0272200001	7.5	×	×	1000 mm	2	02770
0630900001	7.5	×	×	1600 mm	3	02770
0272300001	7.5	×	×	1800 mm	3	02770
0272400001	15	×	×	270 mm	1	×
0272500001	15	×	×	600 mm	2	02770
0272600001	15	×	×	1000 mm	2	02770
0631000001	15	×	×	1600 mm	3	02770
0272700001	15	×	×	1800 mm	3	02770
0272800001	15	✓	×	1800 mm	3	02770



Fixing kits

The fixing kits contain all the elements required to secure the Champion Plus rod to the sash profile and attach the strikers to the frame profile.

Depending on the selected rod, a specific code must be matched to the sliding system.

To find the most suitable fixing kit, consult the application table via the QR-Code shown here, visit the Giesse website or contact the Technical Service Department.

Champion Plus - handles



PRIMA

ASIA

KORA

ARIA

SUPRA7 window handle without base	Standard 04155 Double teeth 04397	Standard 04153 Double teeth 04395	Standard 04154 Double teeth 04396	Standard 04156 Double teeth 04398
Window handle	Standard 02762 Double teeth 02763	Standard 02415 Double teeth 02415	Standard 00997 Double teeth 00998	x
Offset window handle	x	x	Standard 0099611 / 0099621 Long plate 0304911 / 0304921	x



43 mm c/c distance Reguitti handles also available



Recessed handle

External recessed handle

Blank recess handle for opposite sash

Standard **02760**
Oversized profiles **02761**

Standard **02764**

Standard **02765**

Finishes available: base primer, RAL colours and the exclusive high-end "TREND" finishes. Highest corrosion resistance: grade 5 according to European standard EN 1670, for use in environments with severe climatic conditions.

TOP SECURITY

Special sliding

Multilock

Handles

Pulleys

Seals



TOP SECURITY

Multilocking system

Top Security is the multi-locking system particularly suitable for 90°-cut sash sliding systems where the sash-frame distance is particularly small. It guarantees higher safety of the sliding window/door thanks to a higher number of locking points.



200 kg resistance

Each locking point has a pull-out strength of up to 200 kg.



Easy installation

The rod can be fitted quickly and easily by simply screwing it to the sash profile.



Corrosion resistant

Austenitic stainless steel guarantees high corrosion resistance, even in harsh environments.



Versatile

2-point (windows) and 3-point (doors) multi-point locking versions available.



Height adjustment

The height adjustment (3 positions) can be carried out during the installation phase.



Wide range of handles

It can be operated either by a Brio Evo recessed handle or by a Cremona bolt (Unica or Asia aesthetic).



Go to technical sheets

WINDOWS

DOORS

Rod

2-point locking system
Rod length = 720 mm

3-point locking system
Rod length = 1500 mm

Top Security

Code	Description	Notes
03733001	2-locking point rod for windows H = 800-1600 mm	rod length = 720 mm Counterplate positioning template included
03734001	3-locking point rod for doors H = >1600 mm	rod length = 1500 mm Counterplate positioning template included
02612	Universal template for multi-locking	

Counterplates

Depending on the profile, a specific code must be matched to the sliding system.

To find the most suitable counterplates, visit the Giesse website or contact the Technical Service Department.

Universal template for quick fitting

Giesse has developed a special universal template (sold separately) that speeds up the drilling operation on the sash, which is necessary to apply the multi-locking system.



Top Security - handles

			
	UNICA	ASIA	
Cremone	Slider L = 35 mm 01164 N Slider L = 20 mm 01165 N	Standard 01401 Kit Asia Plus, slider L = 20 mm 02025 Kit Asia Plus, slider L = 28 mm 02026 Kit Asia Plus, slider L = 35 mm 02027	
Rod drive	04109	04109	
			
	Recessed handle	External recessed handle with key	External pull handle with key
BRIO EVO Round design	Standard 02992 02 XL 00873 02	06054	02967 V
			
	Recessed handle	External recessed handle with key	External pull handle with key
BRIO EVO Square design	Standard 06037 XL 06039	06004	06009

Finishes available: base primer, RAL colours and the exclusive high-end "TREND" finishes. Highest corrosion resistance: grade 5 according to European standard EN 1670, for use in environments with severe climatic conditions.

MISMO



Special sliding

Multilock

Handles

Pulleys

Seals

MISMO

Multilocking fasteners

Mismo is a modular system of fittings, operated by a cremone, which allows customers to decide the number of locking points for a sliding French window.



Security

The window maker can decide the number of locking points according to the security needs.



Cremone

The cremone allows the hardware to be operated firmly and in comfort.



Versatile

For all systems with 15/20 sash channel or extruded aluminium overlap profile.



Go to **technical sheets**

Code	Description	Notes
0334001	Nib holder	
03345	Straight nib	for 15/20 mm rod with 8 mm hole
-	Counterplate	to be chosen according to the frame

Mismo - handles



UNICA



ASIA

Cremone

Slider L = 35 mm **01164 N**
 Slider L = 20 mm **01165 N**
 Slider L = 45 mm **01166 N**
 Slider L = 55 mm **01173 N**

Standard **01401**
 Kit Asia Plus, slider L = 20 mm **02025**
 Kit Asia Plus, slider L = 28 mm **02026**
 Kit Asia Plus, slider L = 35 mm **02027**
 Kit Asia Plus, slider L = 45 mm **02028**
 Kit Asia Plus, slider L = 55 mm **02029**
 Kit Asia Plus, slider L = 65 mm **02050**

HANDLES



BRIO EVO Recessed handles

Brio Evo is a full range of recessed handles and pull handles for sliding windows and doors.



Two designs
Rounded and square design, for a complete range.



Easy to install
Easier and faster application on profiles up to 3mm.



Strong
The grub screw in Brio Mini Evo is centrally located for sturdier fixing.



Ergonomic
Enhanced ergonomics for comfortable manoeuvring



Variety
Three different backsets available (standard, L and XL)



Cradle to Cradle Certified®
The global standard for environmentally responsible products.



Go to **technical sheets**

BRIO EVO recessed handles are available with both Single tooth and Double teeth tooth.



BRIO EVO pull handles are available also with cylinder key.



BRIO EVO - round design



Brio Evo



Brio Mini Evo

External
recessed
handleExternal
recessed
pull handleExternal
pull handle

Code	Description	Key	Backset	Spring
0298802	Brio Mini Evo	×	12.5	Double teeth Teeth
0297802	Brio Mini Evo MD	×	12.5	Single tooth
0299202	Brio Evo	×	12.5	Double teeth teeth
0289201	Brio Evo key	✓	12.5	Double teeth teeth
0298201	Brio Evo MD	×	12.5	Single tooth tooth
0288201	Brio Evo MD key	✓	12.5	Single tooth tooth
0083101	Brio Evo Rapid	×	12.5	Front fixing
0289401	Brio Evo L	×	18.8	Double teeth teeth
0087302	Brio Evo XL	×	24.3	Double teeth teeth
03043	Brio Pull Handle big	×	-	-
03064	Brio Pull Handle small	×	-	-
06011	External recessed pull handle	×	-	Double teeth teeth/Single tooth
06054	Brio Evo + External recessed handle key	✓	12.5	Double teeth
06019	Brio Evo MD + External recessed handle key	✓	12.5	Single tooth
02966N	Brio External pull handle	×	-	Double teeth/ Single tooth
02967V	Brio External pull handle key	✓	-	Double teeth/ Single tooth
02996	Brio External pull handle for european cylinder key	✓	-	Double teeth/ Single tooth

BRIO EVO - square design



Brio Evo



Brio Mini Evo



External recessed handle

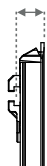


External recessed pull handle



External pull handle

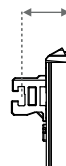
Code	Description	Key	Backset	Spring
0603801	Brio Mini Evo	×	12.5	Double teeth
0601801	Brio Mini Evo MD	×	12.5	Single tooth
06004	Brio Evo	×	12.5	Double teeth
06005	Brio Evo key	✓	12.5	Double teeth
06006	Brio Evo MD	×	12.5	Single tooth
06007	Brio Evo MD key	✓	12.5	Single tooth
06008	Brio Evo L	×	18.8	Double teeth
06009	Brio Evo XL	×	24.3	Double teeth
03050	Brio Pull Handle big	×	-	-
06010	External recessed pull handle	×	-	Double teeth/ Single tooth
06039	Brio Evo + External recessed pull handle key	✓	12.5	Double teeth
06014	External pull handle	×	-	Double teeth/ Single tooth
06037	Brio Evo + External pull handle key	✓	12.5	Double teeth
06052	Brio Evo MD + External handle key	✓	12.5	Single tooth



12.5
backset

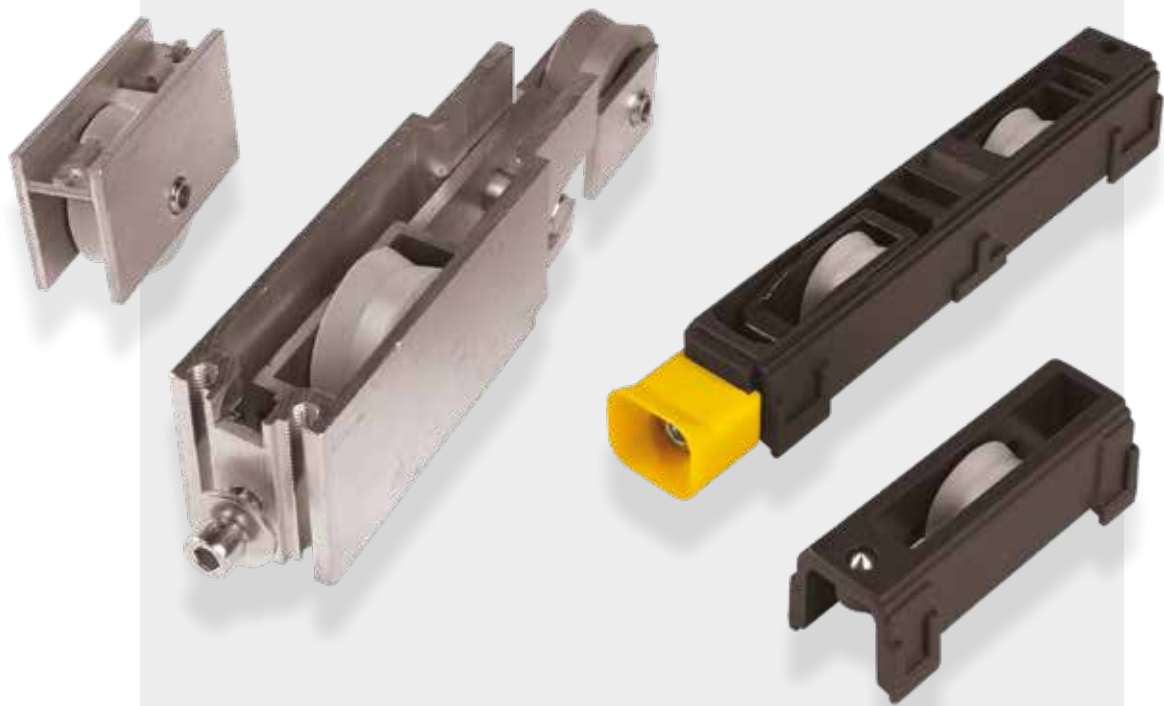


18.8 (L)
backset



24.3 (XL)
backset

Pulleys



Special sliding

Multilock

Handles

Pulleys

Seals

CARRERA

Stationary one-wheel pulley.

- Load capacity of up to 45 kg per wheel, or a sash weight of up to 180 kg
- Corrosion-proof materials for excellent strength and durability, maintaining optimum performance levels



Go to
technical sheet

CARRERA

Stationary two-wheel pulley.

- Load capacity of up to 45 kg per wheel, or a sash weight of up to 180 kg
- Corrosion-proof materials for excellent strength and durability, maintaining optimum performance levels



Go to
technical sheet

CARRERA

Adjustable one-wheel pulley.

- Load capacity of up to 45 kg per wheel, or a sash weight of up to 180 kg
- Corrosion-proof materials for excellent strength and durability, maintaining optimum performance levels



Go to
technical sheet

CARRERA

Adjustable two-wheel pulley.

- Load capacity of up to 45 kg per wheel, or a sash weight of up to 180 kg
- Corrosion-proof materials for excellent strength and durability, maintaining optimum performance levels



Go to
technical sheet

Stationary one-wheel aluminium pulley.

- Load capacity of up to 50 kg with two pulleys
- It can be inspected without disassembling the sash



Go to
technical sheet

Stationary two-wheel aluminium pulley.

- Load capacity of up to 200 kg with two pulleys
- It can be inspected without disassembling the sash



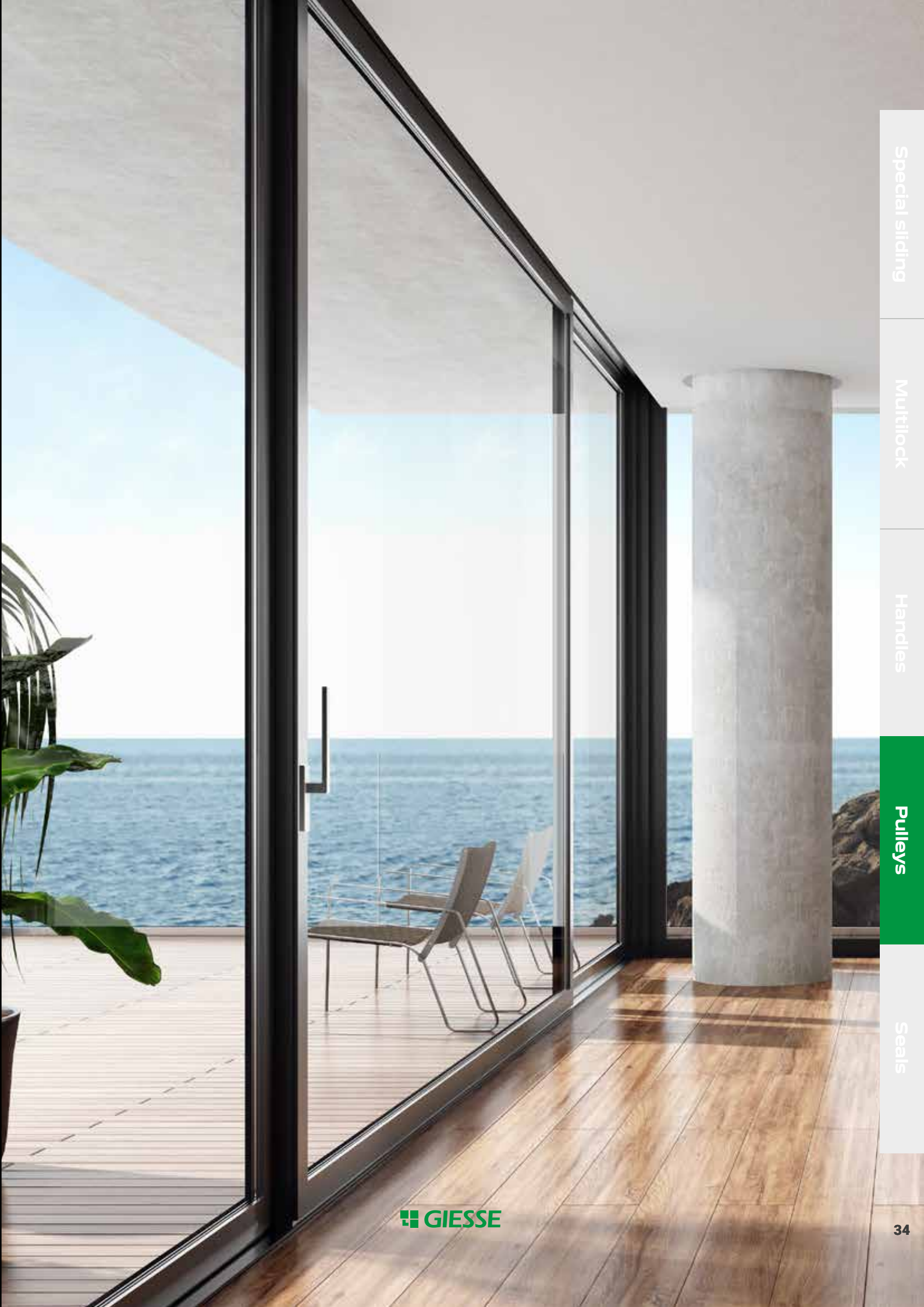
Go to
technical sheet

Adjustable two-wheel aluminium pulley.

- Load capacity of up to 240 kg with two pulleys
- Micro-adjustable, allows vertical movement of the sash through a range of 4 mm
- It can be inspected without disassembling the sash



Go to
technical sheet



Special siding

Multilock

Handles

Pulleys

Seals

Seals



Spezialabdichtung

Multilock

Handles

Pulleys

Seals

Schlegel

Q-LON polyurethane foam weatherseals

The exclusive Q-LON seal is made from a special polyurethane foam contained in a weather resistant polyethylene film.

- Excellent recovery after compression, even at low temperatures
- The lowest thermal conductivity on the market (0.04 W/m·K at 0 °C)
- Low compression force required
- The outer film is not altered by paints, detergents and colourants
- High resistance to weather and UV rays
- Exceptional sound insulation performance
- Wide range of colours
- Fire retardant version available



Discover more

Brush pile seals

Seals made from virgin polypropylene (PP) yarn.

- Available in various widths and heights
- Different densities depending on the seal type, width and assembly distance
- Thermosetting for recovery after compression
- Central and side fins for maximum airtightness
- Excellent resistance to abrasion and static build-up
- UV stable and chemically inert for extended longevity
- Silicone-treated polypropylene yarn to resist water, soil and mould



Discover more

Extruded seals

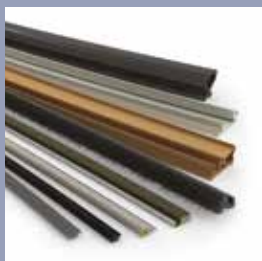
Seals made in a range of extruded materials can be combined with foam seals.

- Very wide range of colours available
- Three different densities and materials for optimal performance
- Configurable geometries from the simplest to the most specific shapes



Discover more





Schlegel

High performance sealing solutions



GIESSE

Innovative engineered hardware



REGUITTI

Italian design handles



DATEC

Timeless exclusive handles

