

# GS3000

LIFT AND SLIDE SYSTEM









# Index

GS3000	
The system	4
Components	8
Pull Handles	
Giesse pull handles	10
Reguitti pull handles	12
Seals	13
Codes	14

# GS3000

## THE SYSTEM

The lift and slide system is the ideal solution for creating large areas of glazing with large, heavy sashes using a multi-point locking system that keeps the weather out securely and effectively.



### Large sizes

Available for sashes weighing up to 400 kg with maximum heights of 3750 mm.



### Reliability and durability

Tested to 25,000 cycles in accordance with EN13126-16:2008 \*.



### Fluid, silent movement

Mechanisms and pulleys designed to make sash opening easier.



### Versatile

The range of locking points and thicknesses ensures that it can be applied to the most common series of profiles.



### Design

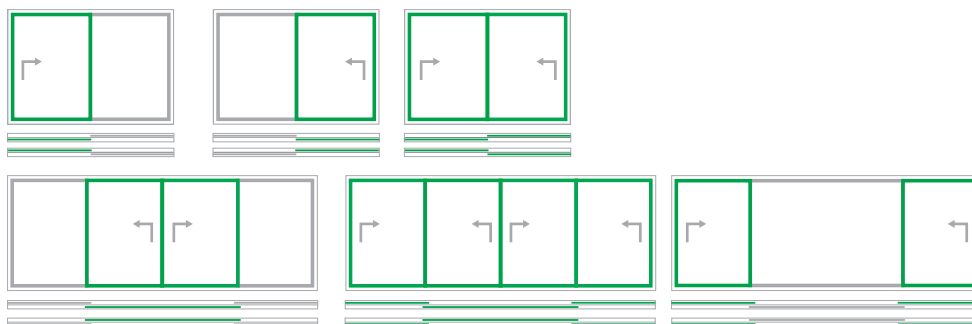
Pull handles with three different styles and numerous different finishes. GS3000 is also compatible with Reguitti Inox pull handles.



### Double version

Pawls applied to the frame (standard) or directly on the driving rod (plus).

**New**



\*Tests performed on the standard version GS3000 with pulleys for sashes up to 300 kg

## Optional functions

### - **Accessibility**

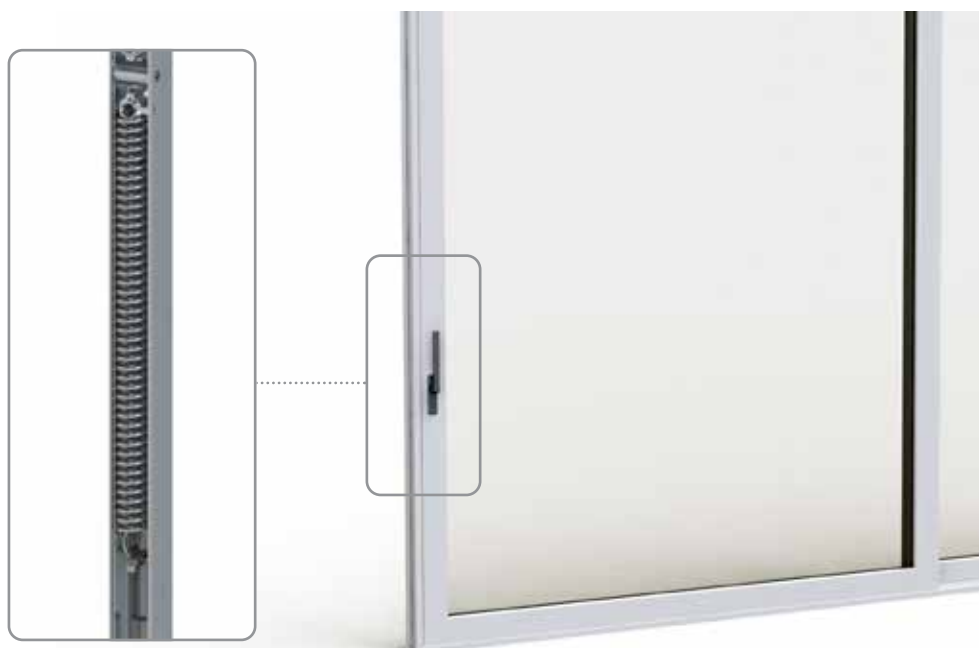
The option to use a lower walkable floor threshold in accordance with the regulations on architectural barriers ensures maximum accessibility to the outside.

### - **Air recirculation**

The optional micro-ventilation is adjustable to ensure a constant air flow regardless of the casement or room size. Minimizes condensation and ensures fresh air supply to the interior without compromising the temperature in the room.

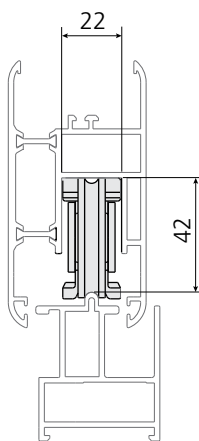
### - **Child safety\***

A spring can easily be installed on the GS3000 standard and plus driving rods in order to dampen the pull handle rotation while lowering the sash, thereby braking its movement and making it return softly to position. This component means that any user can move the sliding door safely, including children.

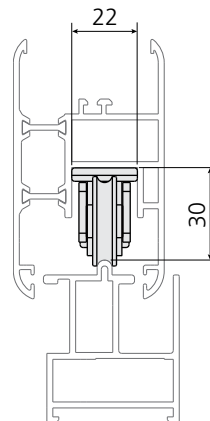


*\*Recommended for sashes weighing more than 150 kg*

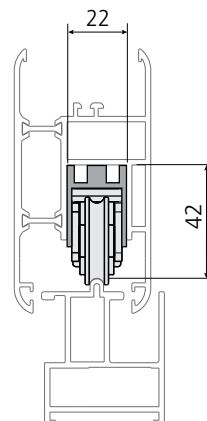
	SASHES UP TO 400 KG	SASHES UP TO 150 KG
Sash width	720 – 3350 mm	600 – 2400 mm
Sash height	1150 – 3750 mm	1150 – 3750 mm
Max sash weight	300 kg (400 kg with two additional pulleys)	150 kg
Pulleys 300/22	For 22 mm slot widths and 42 mm distance from the track	×
Pulleys 150/22	×	For 22 mm slot widths and 30 mm distance from the track
Pulleys 150/18	×	For 22 mm slot widths and 42 mm distance from the track
Driving rods	Sashes with 37.5 mm and 27.5 mm backset	Sashes with 37.5 mm and 27.5 mm backset
Pull Handles	240 mm handle, 80 mm C/C distance 10 mm square Single and double versions with and without cylinder compatibility	240 mm handle, 80 mm C/C distance 10 mm square Single and double versions with and without cylinder compatibility



Pulleys 300/22



Pulleys 150/22



Pulleys 150/18

## Pulleys

Equipped with nylon wheels reinforced with fibreglass to ensure that the system is robust and the sash slides very smoothly.

Pulley kit for sashes up to 300 kg



Pulley kit for sashes up to 150 kg



Additional pulley

- for sashes up to 400 kg (with two pulleys)
- for sashes up to 2500 mm wide and weighing up to 300 kg (with one pulley)

## Driving rods (standard and plus versions)

Aluminium body and stainless steel internal sliding rod.



37.5 mm backset  
compatible with cylinder  
(80 mm fixing c/c distance)



27.5 mm backset  
compatible with cylinder  
(80 mm fixing c/c distance)



Cover extension for sashes  
up to 3750 mm high

# GS3000 Standard

with strikers on the rod



Standard 13 to 16 mm



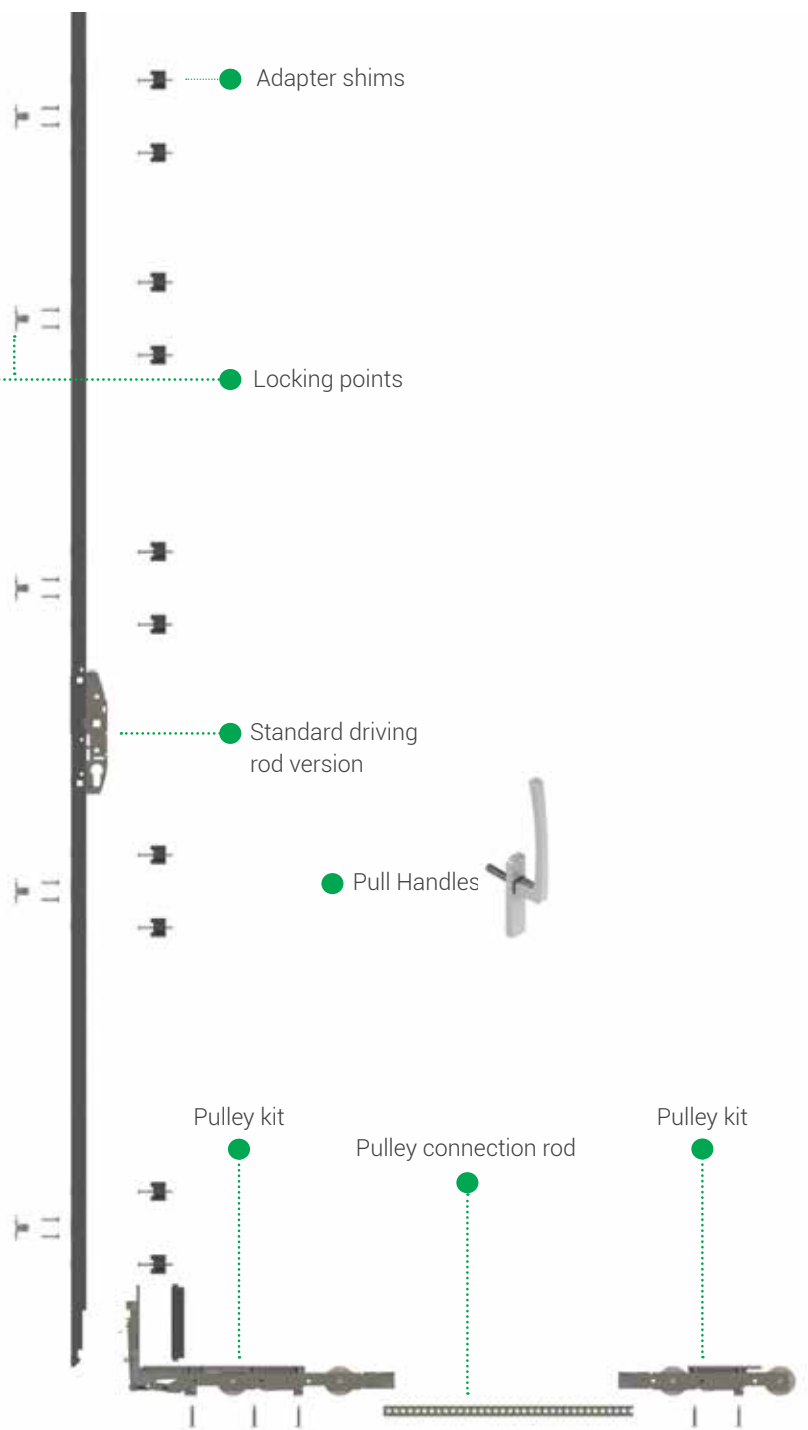
Adjustable 13 to 25 mm



With micro-ventilation



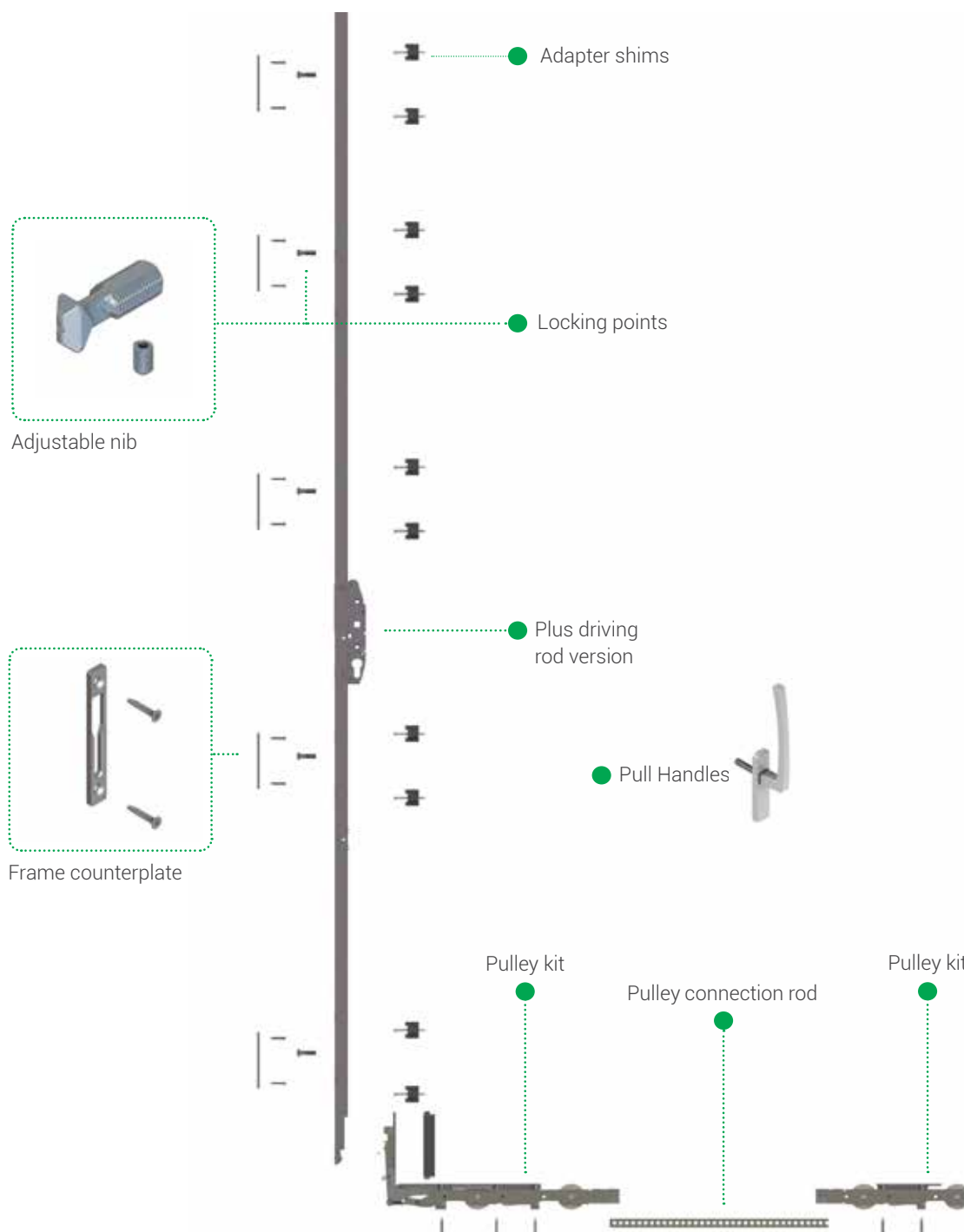
For opposing sashes





# GS3000 Plus New

with strikers on the frame



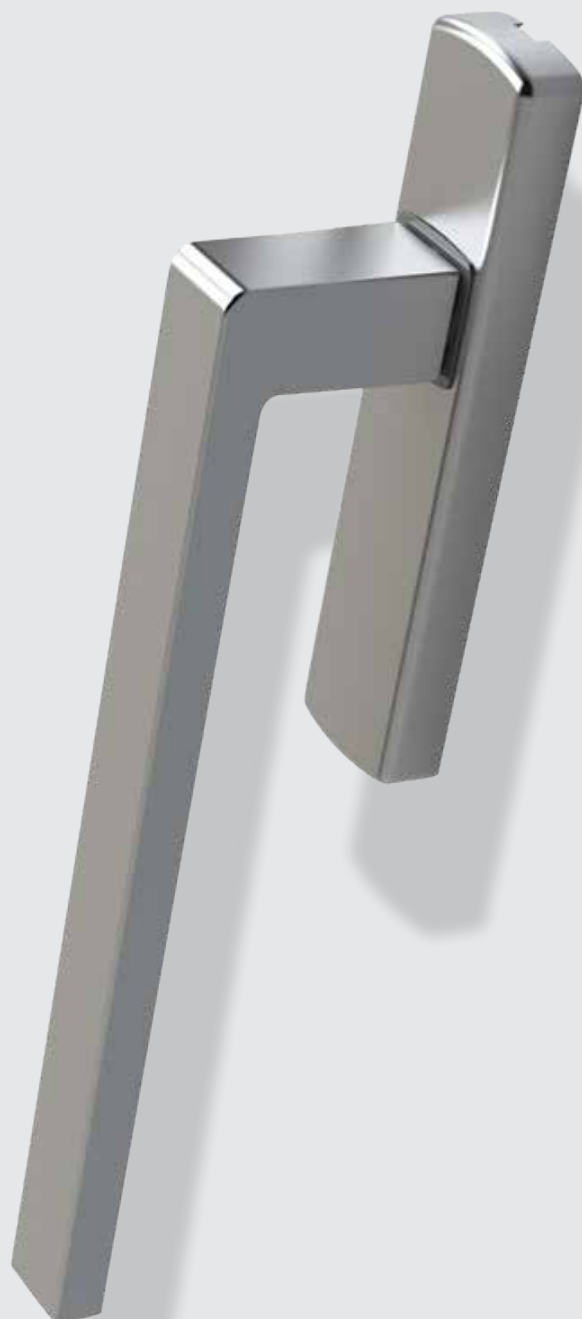
# Pull Handles

GS3000

Pull Handles

Seals

Codes



# PULL HANDLES

Lift and slide system

These offer a uniform style in all environments when combined with the window and door handles of the same design (Asia, Kora and Prima).  
All pull handles have 10 mm square spindle, 80 mm c/c distance and 240 mm handle.



## Heavy use

They can be used on sashes up to 400 kg



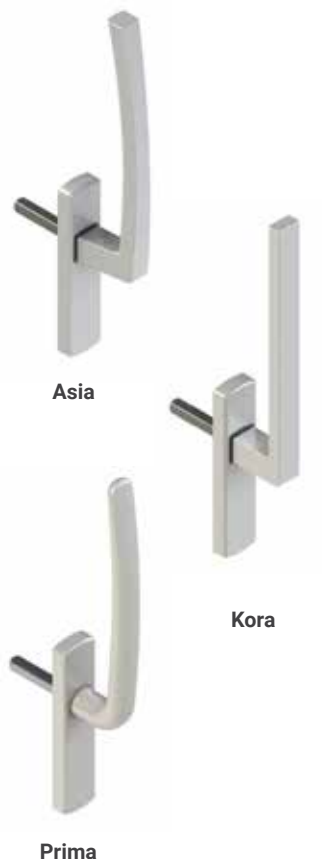
## Primer Base Treatment

Allows the handles to be painted independently in the desired finish



## Antigerm

Antibacterial finish available for applications in public buildings such as hospitals and schools



Asia

Kora

Prima



## Additional information

Find out about all products



Code	Description
0243701	Prima pull handle, single
0243801	Prima pull handle, single, compatible with cylinder
0243901	Prima pull handle, double, compatible with cylinder
0244601	Asia pull handle, single
02447	Asia pull handle, single, compatible with cylinder
02448	Asia pull handle, double, compatible with cylinder
0246801	Kora pull handle, single
0246901	Kora pull handle, single, compatible with cylinder
0247001	Kora pull handle, double, compatible with cylinder
0799501	External recess handle
03978	Sash stop plug
02979	Sash stop plug

# PULL HANDLES

Lift and slide system

In addition to Giesse pull handles, GS3000 can also be combined with Reguitti Inox pull handles for lift and slide systems, offering a wider aesthetic choice.



Toledo



**Heavy use**  
They can be used on sashes up to 400 kg



**3 finishes**  
Black RAL 9005, Satin Stainless Steel  
316 L and PVD Gun Metal Stainless Steel



**Antigerm**  
Antibacterial finish available



**Additional information**  
Find out about all products



Phoenix



Oslo



Stoccolma



Genève

# SEALS Lift and slide system

## Q-LON polyurethane foam weatherseals

The exclusive Q-LON seal is made from a special polyurethane foam contained in a weather resistant polyethylene film.

- Excellent recovery after compression, even at low temperatures
- The lowest thermal conductivity on the market (0.04 W/m·K at 0 °C)
- Low compression force required
- The outer film is not altered by paints, detergents and colourants
- High resistance to weather and UV rays
- Exceptional sound insulation performance
- Wide range of colours
- Fire retardant version available



Full **technical datasheet**

## Brush pile seals

Seals made from virgin polypropylene (PP) yarn.

- Available in various widths and heights
- Different densities depending on the seal type, width and assembly distance
- Thermosetting for recovery after compression
- Central and side fins for maximum airtightness
- Excellent resistance to abrasion and static build-up
- UV stable and chemically inert for extended longevity
- Silicone-treated PP yarn to resist water, soil and mould



Full **technical datasheet**

## Extruded seals

Seals made in a range of extruded materials can be combined with foam seals.

- Very wide range of colours available
- Three different densities and materials for optimal performance
- Configurable geometries from the simplest to the most specific shapes



Full **technical datasheet**





**Driving rod with key, 80 mm c/c distance**

Plus Code	Standard Code	Description	Height	Entrance	Compatible with safety spring	Pcs.
07205	07105	Key driving rod	1700	37.5	no	1 pcs
07206	07106	Key driving rod	1900	37.5	no	1 pcs
07207	0710701	Key driving rod	2000	37.5	yes	1 pcs
07208	0710801	Key driving rod	2300	37.5	yes	1 pcs
07209	0710901	Key driving rod	2600	37.5	yes	1 pcs
07210	0711001	Key driving rod	3000	37.5	yes	1 pcs
07211	07133	Key driving rod	1700	27.5	no	1 pcs
07212	07134	Key driving rod	1900	27.5	no	1 pcs
07213	0713501	Key driving rod	2000	27.5	yes	1 pcs
07214	0713601	Key driving rod	2300	27.5	yes	1 pcs
07215	0713701	Key driving rod	2600	27.5	yes	1 pcs
07216	0713801	Key driving rod	3000	27.5	yes	1 pcs

**Optional elements**

Code	Description	Pcs.
07161	Rod cover extension	1 pcs
07122	Security spring	1 pcs

**Locking points**

Code Plus	Standard Code	Description	Pcs.
	07149	Fixed locking point 13 – 16 mm	5 pcs
	07150	Standard adjustable closing point 13 – 25 mm	10 pcs
	07151	Locking point with micro-vent.	10 pcs
	07152	Locking point for opposing sash	10 pcs
07221		Frame counterplate	5 pcs
07220		Adjustable nib	10 pcs

**Adapter shims (standard and plus versions)**

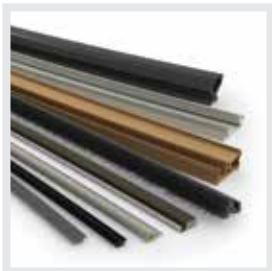
Code	Description	Kit Composition	Size	Pcs.
07153	Kit of 11 mm shims	10 sash shims + 1 pulley shim	11 mm	1 kit
07154	Kit of 14 mm shims	10 sash shims + 1 pulley shim	14 mm	1 kit
07155	Kit of 16 mm shims	10 sash shims + 1 pulley shim	16 mm	1 kit
07156	Kit of 18 mm shims	10 sash shims + 1 pulley shim	18 mm	1 kit
07157	Kit of 21 mm shims	10 sash shims + 1 pulley shim	21 mm	1 kit
07158	Kit of 23 mm shims	10 sash shims + 1 pulley shim	23 mm	1 kit
07159	Kit of 25 mm shims	10 sash shims + 1 pulley shim	25 mm	1 kit
07160	Kit of 30 mm shims	10 sash shims + 1 pulley shim	30 mm	1 kit
07123	Fixed sash spacer (lower cross-beam)			50 pcs

**Pulley kit (standard and plus versions)**

Code	Description	Slot width	Sash/track distance	Maximum load capacity	Usable rod type	Pcs.
07101	300/22 pulley kit	22 mm	42 mm	300 kg	Usable with driving rods with 27.5 mm and 37.5 mm backset	1 kit
07102	Additional central 300/22 pulley	22 mm	42 mm	300 kg 400 kg	With one pulley: for sashes > 2500 mm long and 300 kg maximum load capacity With two pulleys: for sashes with 400 kg maximum load capacity	1 kit
07165	150/18 pulley kit	22 mm	42 mm	150 kg	Usable with driving rods with 27.5 mm and 37.5 mm backset	1 kit
07166	150/22 pulley kit	22 mm	30 mm	150 kg	Usable with driving rods with 27.5 mm and 37.5 mm backset	1 kit

**Pulley connection rods (standard and plus versions)**

Code	Description	Rod width	Sash width	Pcs.
07146	900 mm pulley connection rod	900 mm	600 – 1500 mm	1 pcs
07147	1400 mm pulley connection rod	1400 mm	1501 – 2000 mm	1 pcs
07148	1900 mm pulley connection rod	1900 mm	2001 – 2500 mm	1 pcs



**Schlegel**

High performance sealing solutions



**GIESSE**

Innovative engineered hardware



**REGUITTI**

Italian design handles



**JATEC**

Timeless exclusive handles

