

# HIGH PERFORMANCE **SEALING** SOLUTIONS

FOR **TIMBER** WINDOWS AND DOORS



**Schlegel**

TYMAN group

# Q-LON

## Polyurethane foam seals

The unique Q-LON seal is made from a special polyurethane foam, contained in a weather resistant polyethylene liner.



### Film

#### **Polyethylene (PE) film**

Smooth or embossed surface.  
Weather and UV-resistant.

### Foam

#### **Polyurethane (PU) foam core**

High durability, superior  
recovery performance.

### Insert

#### **Polypropylene (PP)**

or with glass fibre cord  
Prevents elongation and shrinkage.



### Standard Colours

RAL 9003 Code 222	RAL 7001 Code 212	RAL 8019 Code 220	RAL 9005 Code 223
----------------------	----------------------	----------------------	----------------------

### Extra Colours

RAL 1001 Code 211	RAL 8003 Code 217	RAL 8001 Code 216	RAL 8007 Code 218	RAL 8015 Code 219	RAL 9010 Code 221	RAL 7035 Code 215	RAL 7032 Code 213	RAL 7024 Code 214
----------------------	----------------------	----------------------	----------------------	----------------------	----------------------	----------------------	----------------------	----------------------



## EXCELLENT MEMORY

The original formulation of Q-LON enables it to return to its original shape after being compressed **up to 50% more than other extruded seals**, even at extremely low temperatures.<sup>1</sup>



## EXCELLENT SOUND INSULATION

Exceptional acoustic insulation performance thanks to high compression ability. **Up to 4 dB noise reduction compared with extruded seals.**<sup>2</sup>



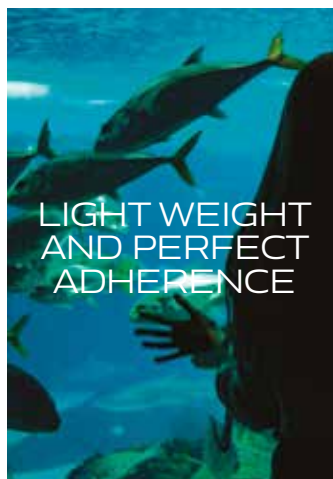
## EVERLASTING

The external polyethylene film is not altered by paints, detergents or dyes. Its high resistance to atmospheric conditions and UV radiation ensures that **Q-LON lasts three times longer than the most common foam seals.**<sup>3</sup>



## VERY LOW THERMAL CONDUCTIVITY

Q-LON polyurethane seals offer the lowest thermal conductivity on the market (0.04 W/m·K at 0°C), **3 to 6 times better than other materials.**<sup>4</sup>



## LIGHT WEIGHT AND PERFECT ADHERENCE

Thanks to the characteristic softness and adaptability of Q-LON, windows require a **low compression force when closing**. Q-LON provides a tight seal after the window is altered by temperature fluctuations or ageing.



## FIRE RETARDANT

**Seals classified to EN 13501-1, Class E**, designed to reduce the spread of fire when in contact with it, slowing the speed of flames and avoiding the dispersion of flammable material.

<sup>1</sup> Test performed in accordance with classification E 12365 on a selection of Q-LON seals compared with extruded seals

<sup>2</sup> Test performed to UNI EN ISO 10140-2 on a selection of Q-LON seals compared with extruded seals.

<sup>3</sup> Accelerated ageing test performed according to DIN EN ISO 4892-2 on a selection of Q-LON and other seals on the market.

<sup>4</sup> Test performed in accordance with EN 12667:2001 standard in comparison with extruded gaskets



# Brush pile seals

Seals made from virgin polypropylene (PP) yarn.



- Available in many different widths and heights
- Different densities depending on seal type, width and mounting distance
- Heat setting for recovery after compression
- With optional adhesive backing based on hot-melt (HM) glue technology

Multifilament  
Standard soft multifilament yarn.



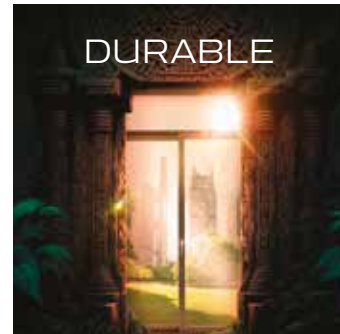
Trilobal PP-yarn  
PP yarn treated with silicone to resist water, mould and mildew.



Excellent resistance to abrasion and static build-up and low friction for improved sliding performance.



The central and lateral fins offer better air tightness.



UV stable and chemically inert for prolonged life.

## Standard Colours Monofilament

RAL 7045 Code 277	RAL 9005 Code 288	Neutral Code 000
----------------------	----------------------	---------------------

## Extra Colours Multifilament

RAL 1015 Code 266	RAL 7011 Code 240	RAL 8008 Code 244	RAL 8014 Code 281
----------------------	----------------------	----------------------	----------------------

## Standard Colours Monofilament

RAL 1011 Code 241	RAL 1032 Code 292	RAL 7045 Code 277	RAL 8025 Code 291	RAL 8028 Code 264	RAL 9003 Code 287	RAL 9005 Code 288
----------------------	----------------------	----------------------	----------------------	----------------------	----------------------	----------------------

# Extruded seals

Schlegel extruded seals are made from various extruded materials and can be combined with foam seals.

- Schlegel extruded seals come in three different densities and materials, which can be mixed and matched for optimal performance.
- Lozaron TPE extruded profiles without foam (LT)
- Polypropylene (LP) and PVC (LV) extrusions
- Lozaron TPE extrusions with flexible microcell foam (LF)

Compression part

Softer material.

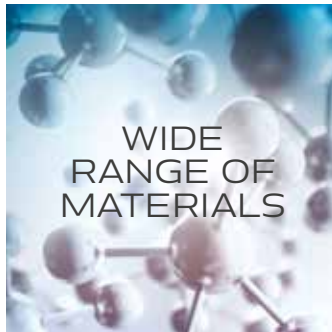
Base

Harder material.



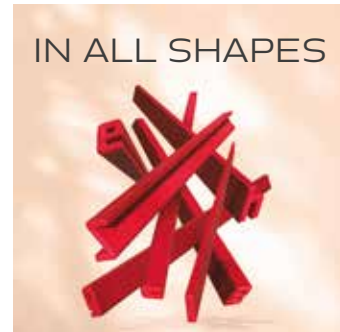
WIDE RANGE OF COLOURS

Schlegel extruded seals come in a huge range of colours.



WIDE RANGE OF MATERIALS

Schlegel extruded seals are made from the best material to suit each application.



IN ALL SHAPES

Schlegel extruded seals can be configured with geometries ranging from the simplest to the most specific shapes.

## Standard Colours

RAL 8019 Code 285	RAL 9003 Code 287	RAL 8019 Code 288
----------------------	----------------------	----------------------

## Extra Colours

RAL - Code 200	RAL 9018 Code 265	RAL 9011 Code 268	RAL 1001 Code 270
RAL 7001 Code 271	RAL 7024 Code 273	RAL 7032 Code 274	RAL 7035 Code 275
RAL 7037 Code 276	RAL 8001 Code 278	RAL 8015 Code 282	RAL 8017 Code 284

# Types of application

## Q-LON

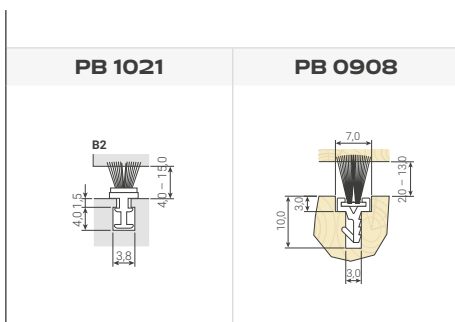
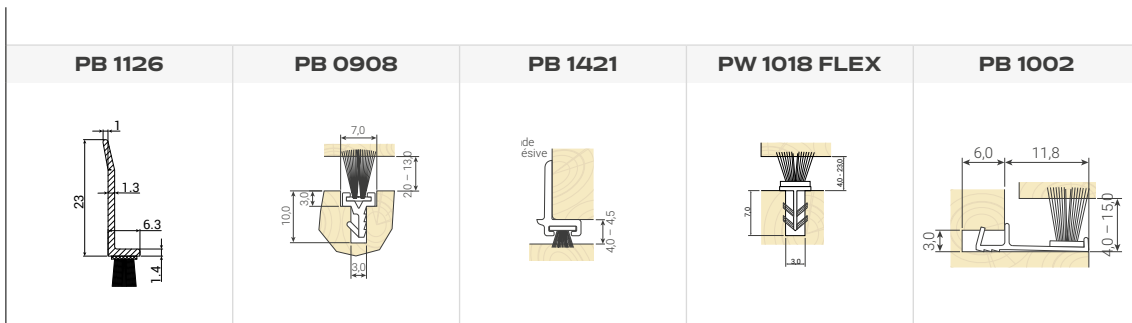
Rebate 8 mm			Rebate 9 mm	
<b>QL 3005</b>	<b>QL 3077</b>	<b>QL 9171</b>	<b>QL 45</b>	<b>QL 3118</b>

Rebate 10 mm			
<b>QL 50</b>	<b>QL 3072</b>	<b>QL 3138</b>	<b>QL 9985</b>

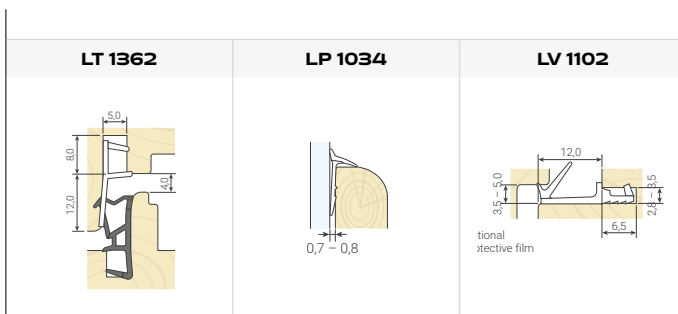
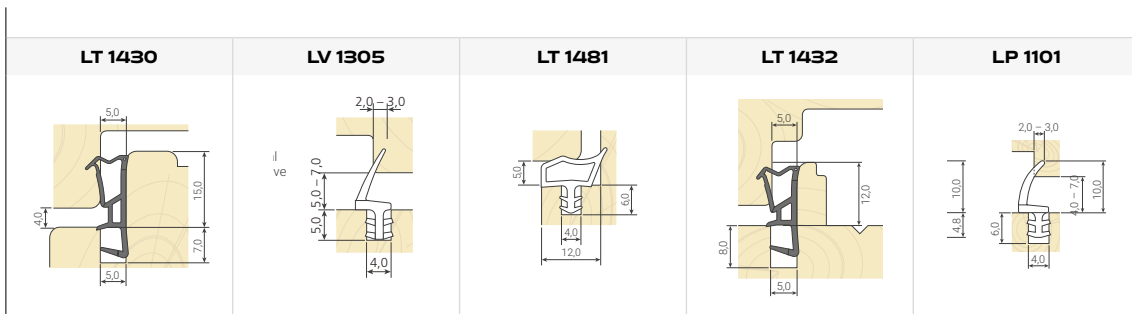
Rebate 11 mm		Rebate 12 mm		Rebate 13 mm
<b>QL 3009</b>	<b>QL 3116</b>	<b>QL 3110</b>	<b>QL 3053</b>	<b>QL 7000</b>

Rebate 14/15 mm	Rebate 15 mm		Rebate 18 mm	Rebate 20 mm
<b>QL 3152</b>	<b>QL 3091</b>	<b>QL 3121</b>	<b>QL 9613</b>	<b>QL 9608</b>

## Brush pile seals



## Extruded seals







**Schlegel**

High performance sealing solutions



**GIESSE**

Innovative engineered hardware



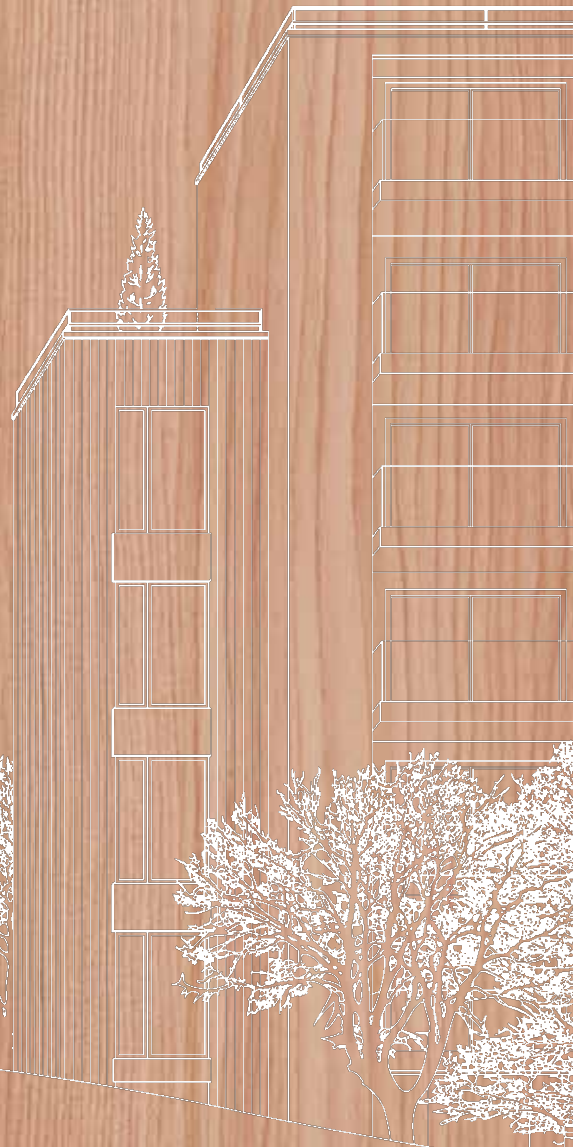
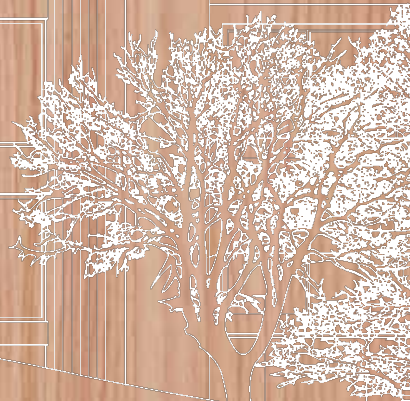
**REGUITTI**

Italian design handles



**DATEC**

Timeless exclusive handles



 **TYMAN**  
International

GIESSE S.p.A. Via Tubertini 1, 40054 Budrio (BO), Italia  
Tel: +39 051 8850000 | email: info.it@tyman.com



U1082001  
07/2023