

A complete range for
Erre Groove

 **GIESSE**
TYMAN group

A complete range for Erre Groove

Giesse offers a complete range of components designed for every type of opening with R groove.



Tilt-and-Turn

CHIC concealed hinges
FUTURA 3D Kit

Side-Hung

CHIC concealed hinges
Flash hinges
Bridge hinges

Bottom-hung windows

CHIC concealed hinges
Bridge hinges

Top-hung window

Bridge hinges
Laser Arm
Bravo flat handle

Shutter

Flash hinges
Nova opening kit
Unica opening kit

Tilt and Slide

GS1000

Pivot

Friblok pivot hinge
Bravo flat handle

Door

CHIC Door concealed hinges
Fulcra hinges
Celera hinges
Domina hinges





TILT AND TURN

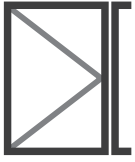
C.H.I.C. 3D Tilt and turn kit

Code	Description	Notes	Pieces per pack
04766N	Fastening mechanism	130 kg	10
04767V	M180 fastening mechanism	130 kg	10
04768N	Logica fastening mechanism	130 kg	10
05284 1	C.H.I.C. – Hinges Kit + T1 arm RH no Micro-ventilation	130 kg	10
05284 2	C.H.I.C. – Hinges Kit + T1 arm LX no Micro-ventilation	130 kg	10
05285 1	C.H.I.C. – Hinges Kit + T1 arm RH with Micro-ventilation	130 kg	10
05285 2	C.H.I.C. – Hinges Kit + T1 arm LX with Micro-ventilation	130 kg	10
05286 1	C.H.I.C. – Hinges Kit + T2 arm RH with Micro-ventilation	130 kg	10
05286 2	C.H.I.C. – Hinges Kit + T2 arm LX with Micro-ventilation	130 kg	10
05287	Arm additional fastening mechanism		10
04308K	Additional arm		10
04648K	Additional fastening		10
03525	Connection rod		1
02034K	Friz stay limitation arm	2 pz	10
03058	C.H.I.C. Erre - Template for Tilt-and-turn		20

Tilt and turn kit **Futura 3D**

Code	Description	Notes	Pieces per pack
04721	Hinges	110 kg	10
04766N	Fastening mechanism	110 kg	10
04767V	M180 fastening mechanism	110 kg	10
04768N	Logica fastening mechanism	110 kg	10
04380	Futura 110 - T0 arm no Micro-ventilation	110 kg	10
0422901	T1 arm with Micro-ventilation	110 kg	10
0423001	T2 arm with Micro-ventilation	110 kg	10
04308K	Additional arm	110 kg	5
04017K	Corner drive		10
03525	Connection rod		1
04648K	Additional fastening		10
01062	One-way Mechanism		10
02034K	Friz stay limitation arm		10

Discover the full range of Giesse handles on tyman-international.com



SECONDARY SASH

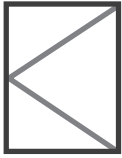
C.H.I.C. 3D Secondary sash

Code	Description	Notes	Pieces per pack
05283 1	C.H.I.C. – Sash Hinges Kit - RH	130 kg	10
05283 2	C.H.I.C. – Sash Hinges Kit - LX	130 kg	10
05288	Adjustable fastening element		25
01317	Double striker		100
04231	Two-way lever bolt		10
04265K	Secondary sash bolt		10

Futura 3D Secondary sash

Code	Description	Notes	Pieces per pack
04721	Hinges	110 kg	10
04423	Hinges adapter		10
01391	Adjustable fastening element		100
01317	Double striker		100
04231	Two-way lever bolt		10
04265K	Secondary sash bolt		10

Discover the full range of Giesse handles on tyman-international.com



SIDE HUNG

C.H.I.C. Concealed hinges

Code	Description	Notes	Pieces per pack
05283 1	C.H.I.C. – Sash Hinges Kit - RH	130 kg	10
05283 2	C.H.I.C. – Sash Hinges Kit - LX	130 kg	10
05288	Adjustable fastening element		50

Flash Hinges

Code	Description	Notes	Pieces per pack
00128U	Flash base		20
001281	Flash base - pre-assembled RH		50
001282	Flash base - pre-assembled LX		50
00564U	Flash base - flush profile		20
005641	Flash base - flush profile pre-assembled RH		50
005642	Flash base - flush profile pre-assembled LX		50

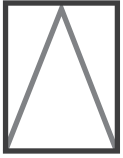
Bridge Hinges

Code	Description	Notes	Pieces per pack
00602N	Bridge	90/100 kg	20

Fastenings

Code	Description	Notes	Pieces per pack
01317	Double striker		100
01215	Zamak double striker		100
02141K	Terminal for rods		25
04231	Two-way lever bolt		10
04265K	Secondary sash bolt		10
02385K	Connecting block		100
0102001	M90 two-way internal mechanism		5
01190	Adapter kit for two-way internal mechanism M90		10
01391	Adjustable fastening element		50

Discover the full range of Giesse handles on tyman-international.com



PIVOT

C.H.I.C. Concealed hinges

Code	Description	Notes	Pieces per pack
05295	C.H.I.C. – Bottom-hung window hinge kit	250 kg	10
05296	C.H.I.C. – Bottom-hung window raising component L > 1500 mm	250 kg	10

Bridge Hinges

Code	Description	Notes	Pieces per pack
00602N	Bridge		20

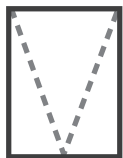
Componenti

Code	Description	Notes	Pieces per pack
0170601	Twin Catch		40
02042K	Rallenty arm (pair) L= mm 250		10
02043K	Rallenty arm (pair) L= mm 150		10
02034	Friz stay limitation arm	2 pcs	10

HP bottom-hung window kit

Code	Description	Notes	Pieces per pack
01207	Futura horizontal security sash mechanism	max 250 kg	10
02235	90° Cremona stop block		100

Discover the full range of Giesse handles on tyman-international.com



TOP HUNG

Components

Code	Description	Notes	Pieces per pack
00602N	Bridge		20
01956	Laser Arm		10
01640N	Bravo flat handle - Prima line		20
01650N	Bravo flat handle - Euro line		20

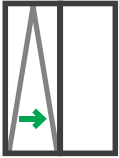


SHUTTER

Components

Code	Description	Notes	Pieces per pack
00128U	Flash base		20
001281	Flash base - pre-assembled RH		50
001282	Flash base - pre-assembled LX		50
01004	Nova Cremone		20
01150001	Unica Cremone		10
01154001	Unica apex Cremone		10
02251K	Futura connection Pin	L 18 mm	200
02255K	Futura connection Pin	L 28 mm	200
02237	Kit for outward opening Unica system		50
02250	Kit for outward opening		20
02353	Nova connection Kit		20

Discover the full range of Giesse handles on [tyman-international.com](https://www.tyman-international.com)



TILT AND SLIDE

GS1000

Code	Description	Notes	Pieces per pack
09758	GS1000 Hardware Set		1
09774	GS1000 Accessories Set		1
09775	Accessories set with reinforcements GS1000		1
09776	GS1000 single pulley set - RH		1
09777	GS1000 single pulley set - LX		1
09723	Stay arm L= mm 630-930		1
09724	Stay arm L= mm 931-1280		1
09725	Stay arm L= mm 1281-1680		1
09761	GS1000 profiles set L= mm 630-880		1
09762	GS1000 profiles set L= mm 881-1080		1
09763	GS1000 profiles set L= mm 1081-1280		1
09764	GS1000 profiles set L= mm 1281-1480		1
09765	GS1000 profiles set L= mm 1481-1680		1
09789	GS1000 support block		1



PIVOT HINGED SASH

Components

Code	Description	Notes	Pieces per pack
01449	Friblok pivot hinge		4
01640N	Bravo flat handle - Prima line		20
01650N	Bravo flat handle - Euro line		20

Discover the full range of Giesse handles on [tyman-international.com](https://www.tyman-international.com)



PORTA

C.H.I.C. Door Concealed hinges

Code	Description	Notes	Friz stay limitation arm (opzional*)	Pieces per pack
00726020	C.H.I.C. Door RG anodized silver	120/135/150 kg	02034020K	2
00726190	C.H.I.C. Door RG anodized black	120/135/150 kg	02034190K	2

* In the case of sashes opening at more than 90°, the use of a Friz limiting arm is always recommended

Hinges with channel fixing **Fulcra**

Code	Description	Notes	Pieces per pack
00701	Fulcra	120/150 kg	10

Hinges with channel fixing **Celera**

Code	Description	Notes	Pieces per pack
00682	Celera	100/120 kg	20
00690	Celera 3° sash	100/120 kg	20

Front-mounting hinges **Domina**

Code	Description	Notes	Pieces per pack
05160V	Domina HP - 2 leaf	180 kg	10
05161V	Domina HP - 3 leaf	200 kg	10
05120V	Domina HP Cover - 2 leaf		10
05121V	Domina HP Cover - 3 leaf		10
05120N	Domina HP Cover - 2 leaf		10
05121N	Domina HP Cover - 3 leaf		10
05166V	Domina HP - 2 leaf	c/c distance mm 84	10
05167V	Domina HP - 3 leaf	c/c distance mm 84	10
05176V	Domina HP - 2 leaf	c/c distance mm 62,5 - stef mm 8	10
05177V	Domina HP - 3 leaf	c/c distance mm 62,5 - stef mm 8	10
05196	Step 8 for Domina HP		10
03237	Dima di lavorazione per Domina HP		1
0520001	Counterplate kit Domina - 2 leaf		10
0520101	Counterplate kit Domina - 3 leaf		10
0520201	Counterplate kit Domina - 2 leaf	step	10
0520301	Counterplate kit Domina - 3 leaf	step	10
05243	Domina SKG 2-wing burglar-proof kit		10
05244	Domina SKG 3-wing burglar-proof kit		10
06170	Domina Classic - 2 leaf	180 kg	10
06171	Domina Classic - 3 leaf	200 kg	10
06176	Domina Classic - 2 leaf	c/c distance mm 84	10
06177	Domina Classic - 3 leaf	c/c distance mm 84	10



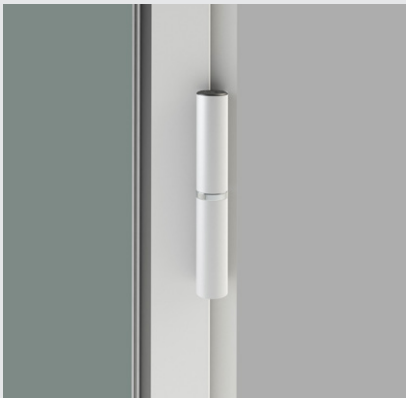
C.H.I.C.
anta ribalta e battente



C.H.I.C.
bottom-hung window



Futura 3D
tilt and turn



Flash
window



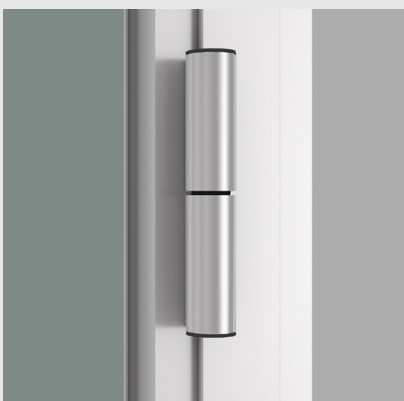
Bridge2
window



GS1000
tilt and slide



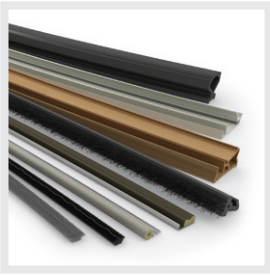
C.H.I.C. Door
door



Fulcra
door



Domina
door



Schlegel

High performance sealing solutions



GIESSE

Innovative engineered hardware



REGUITTI

Italian design handles



JATEC

Timeless exclusive handles

