

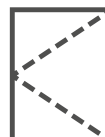


OUTWARD OPENING
GHIBO PLUS CW1

OUTWARD OPENING: GHIBO PLUS CW1



Parallel opening



Outward side-hung



Outward top-hung

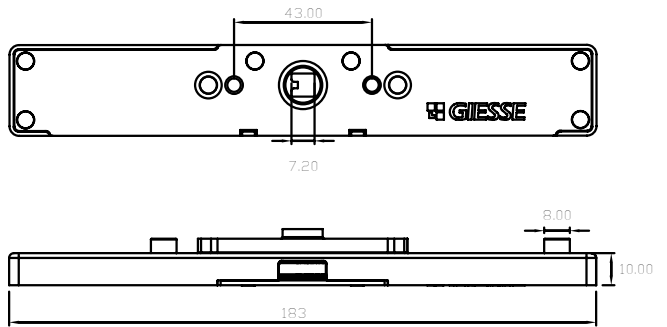
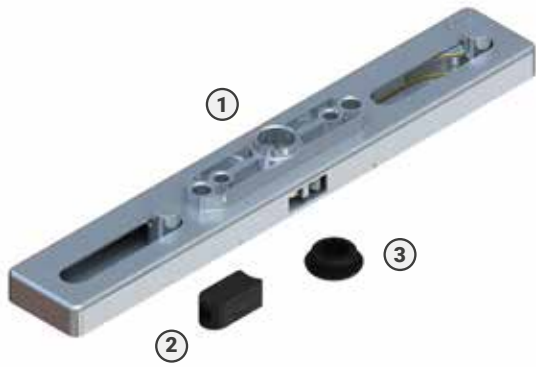
The Ghibo Plus CW1 mechanism is a one-way device that is fitted on the sash profile of a curtain wall to move the fastener pawls applied on the fastening rod. Compact and space-saving, it can also be applied to particularly narrow sash profiles.

Main technical characteristics:

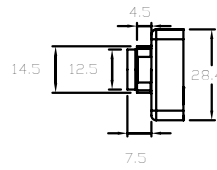
- Type of stroke: one-way 3 positions: (0-90-180°), can be reduced to 2 (rotation locked at 90°);
- Stroke length: 18 + 18 mm (or only 18 mm in case of 90° handle rotation stop)
- Possibility of stopping handle rotation at 90°
- Product dimensions: 180 x 28.4 x 10 mm
- Compatible with all window handles with 7 mm square pin and 43 mm fixing C/C distance and with rods with 8 mm hole
- AISI 304 stainless steel cover
- Generally applicable in systems with a 17 mm sash-to-frame distance and 15–20 mm channel on the sash
- Tested to 25,000 opening and closing cycles
- Applicable on top-hung, side-hung and parallel openings

Item code	Description	Type of stroke	Stroke length	Sash/frame distance	Notes
02079	GHIBO PLUS CW1	one-way	18+18 mm	17 mm	Compatible with window handles with 7 mm square pin



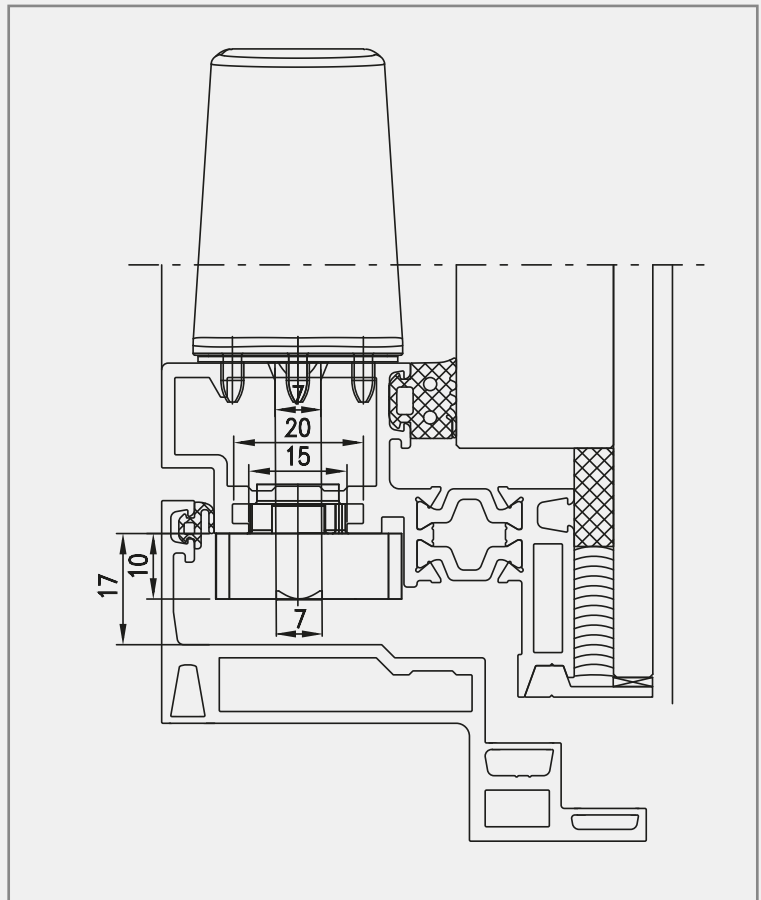
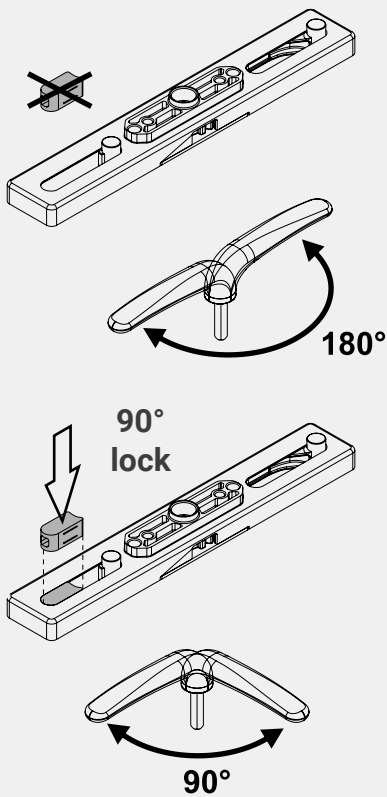


	description	unit
1	Mechanism	1
2	90° lock	1
3	Plug for closing pin hole (in case of "away" version)	1



Ghibo Plus CW1

Operation



A brighter sky.

Schlegel

GIESSE

REGUITTI

JATEC

Four brands, one brilliant identity.

We are **Tyman International**, a division of the Tyman group, worldwide supplier of engineered fenestration components and access solutions.

We strive to design brilliant hardware that improves performance, reliability and assembly speed, redefining the standard of windows and doors.

Our aim is to transform the security, comfort and sustainability of buildings through our expert touch.

 **TYMAN**
International

tyman-international.com

