

The image features a close-up of several aluminum profiles with a textured, woven surface. The profiles are arranged in an overlapping fashion, demonstrating the 'Q-LON OVERLAP' technique. The background is a light blue-grey color with large, white, semi-circular graphic elements that create a sense of depth and focus on the profiles. The text 'Q-LON OVERLAP for aluminium' is positioned on the left side of the image.

Q-LON OVERLAP
for aluminium

Q-LON OVERLAP

FOR ALUMINIUM APPLICATIONS

Q-Lon Overlap is the first foam gasket for aluminum windows that combines excellent thermal insulation with exceptional acoustic performance. Q-Lon is a technological innovation in the world of gaskets: the range is made of polyurethane foam with a polyethylene coating that can be combined with the colour of the profile on which the gasket is installed. SchlegelGiesse has brought the potential of the Q-Lon range into the world of aluminum by creating the first Q-Lon

specifically for aluminum casement windows. Q-Lon Overlap is the first overlap gasket in which aesthetic properties merge with innovative technological features to create a top-level product within the seals sector. The Q-Lon Overlap gasket stands out from its competitors for its exceptional thermal insulation properties (thermal conductivity 0.041 W/mK) and the excellent acoustic insulation it gives to the windows in which it is installed.



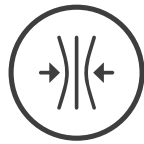
Push-fit and sliding installation



Wide range of colors



Low thermal conductivity:
0.041 W/mK



Excellent recovery
after **compression**



No cutting of the gaskets under the hinges and **continuity** in the corners



Reduced
opening force

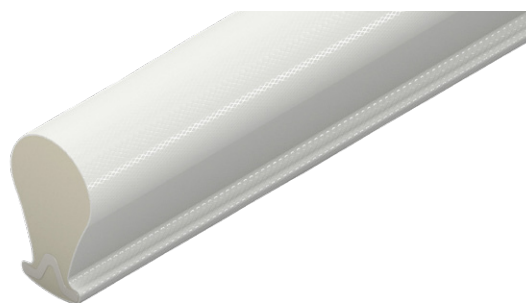
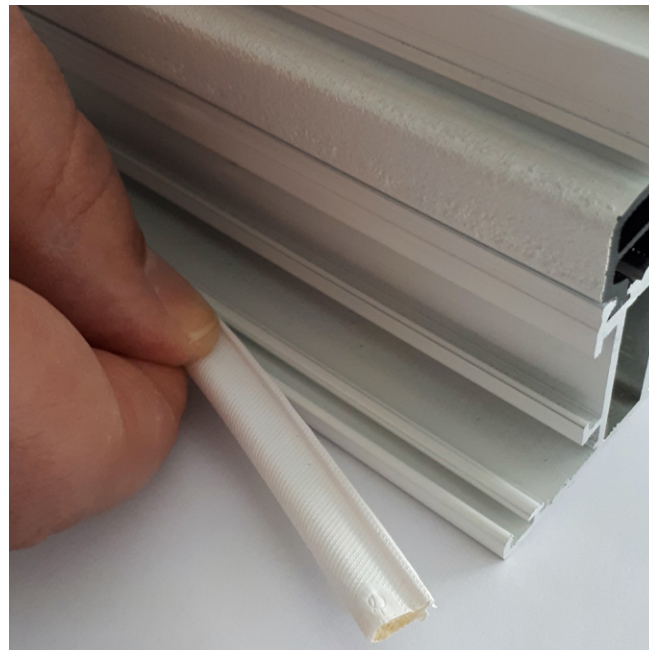
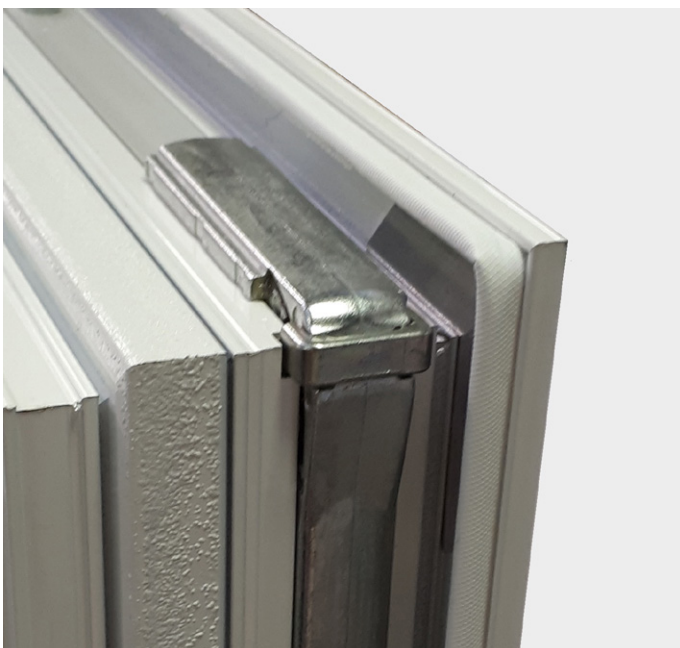


Exceptional acoustic performance



Easy
to remove

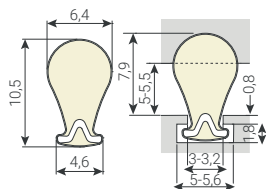
Q-Lon Overlap can be inserted along the channel or frontally and it can be removed for maintenance. Moreover, it does not need to be cut at the corners and can therefore be installed without interruption along the entire perimeter of the sash. Thanks to the properties of the materials with which it is produced, Q-Lon Overlap has excellent recovery after compression.



Q-LON CODES

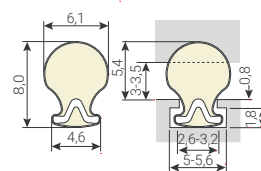
QL 46105 OVERLAP SEAL

Throat width: 3 - 3,2
Groove width: 5 - 5,6
Seal gap: 5 - 5,5
Packaging: 250 m x 2

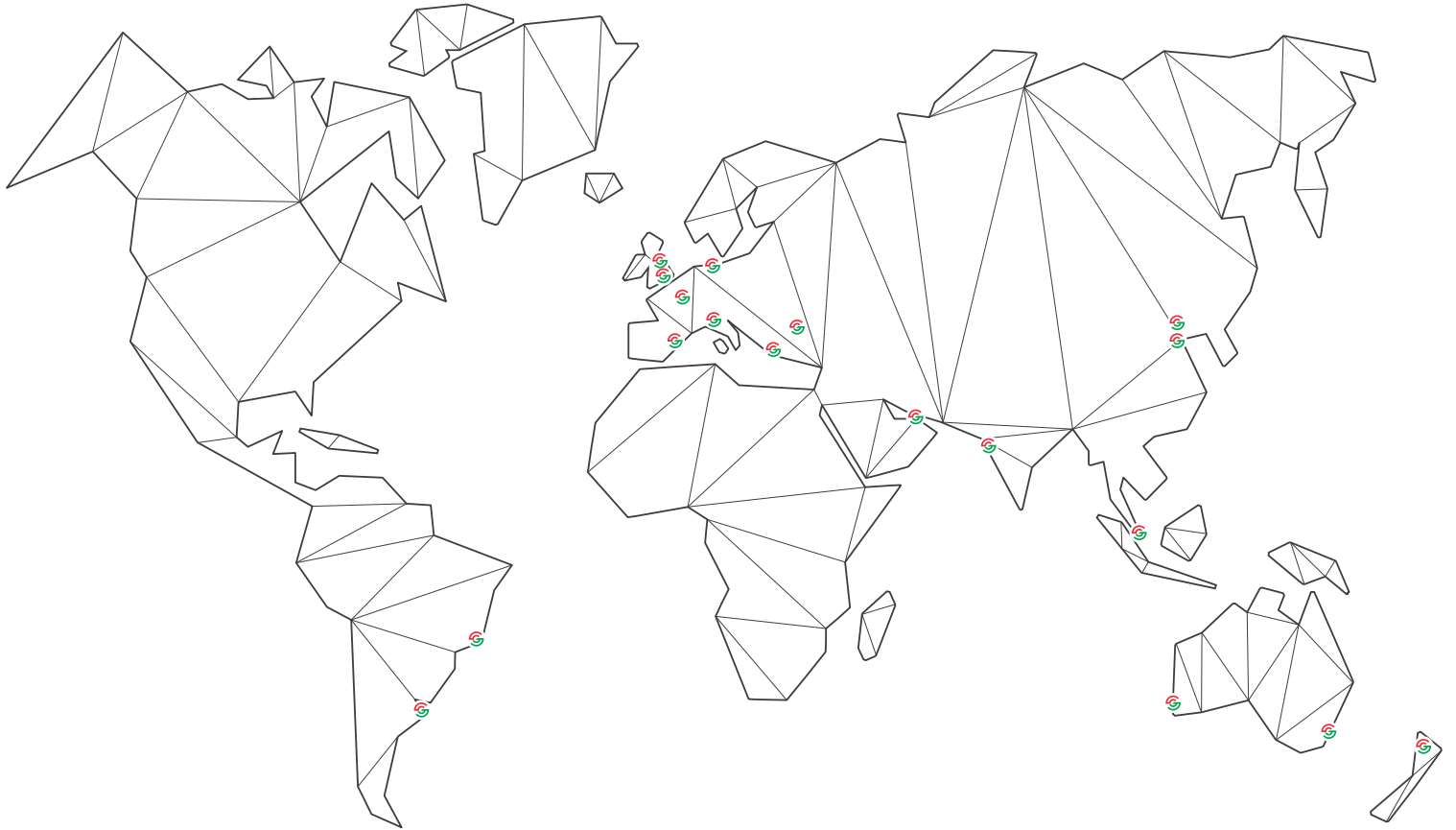


QL 46800 OVERLAP SEAL

Throat width: 2,6 - 3,2
Groove width: 5 - 5,6
Seal gap: 3 - 3,5
Packaging: 250 m x 2



A GLOBAL PARTNER



SCHLEGELGIESSE
MADE FOR THE FUTURE

GIESSE S.p.A.

Via Tubertini 1, 40054 Budrio (BO), Italy

Tel: +39 051 8850000 • Fax: +39 051 8850001 • email: info.it@schlegelgiesse.com



U0859001 - 05/2019

www.schlegelgiesse.com