



MOST POPULAR

HARDWARE FOR ALUMINUM
DOORS AND WINDOWS

MOST POPULAR

HARDWARE FOR ALUMINUM DOORS AND WINDOWS

HARDWARE FOR SLIDING CASEMENTS	6
TILT AND SLIDE GS1000	12
LIFT AND SLIDE GS3000	14
HARDWARE FOR OUTWARD OPENING	16
AUTOMATIONS	27
HARDWARE FOR INWARD OPENING	28
HINGES	40
DOOR HARDWARE	41
HANDLES	54
SCHLEGELGIESSE LABORATORY	59

Partnership. Performance. Quality. Innovation. Looks.

Our identity and the way in which we generate ideas originate from these values.

The ability to design, produce and bring cutting-edge solutions to the world, that have one single, common aim: offering added value to our customers in the doors, windows and curtain walling sector.

The merger of Schlegel, a leading British producer of sealing systems, and Giesse, the Italian leader in hardware for aluminum doors and windows, took place in 2016, bringing today's SchlegelGiesse to life.

We are the international division of Tyman plc, a London stock exchange-listed group, whose marketing network can extend to customers in over 100 countries, offering them the highest level of satisfaction.

The SchlegelGiesse world of aluminum.



The SchlegelGiesse world of seals.



The SchlegelGiesse world of handles.



The SchlegelGiesse world of stainless steel.

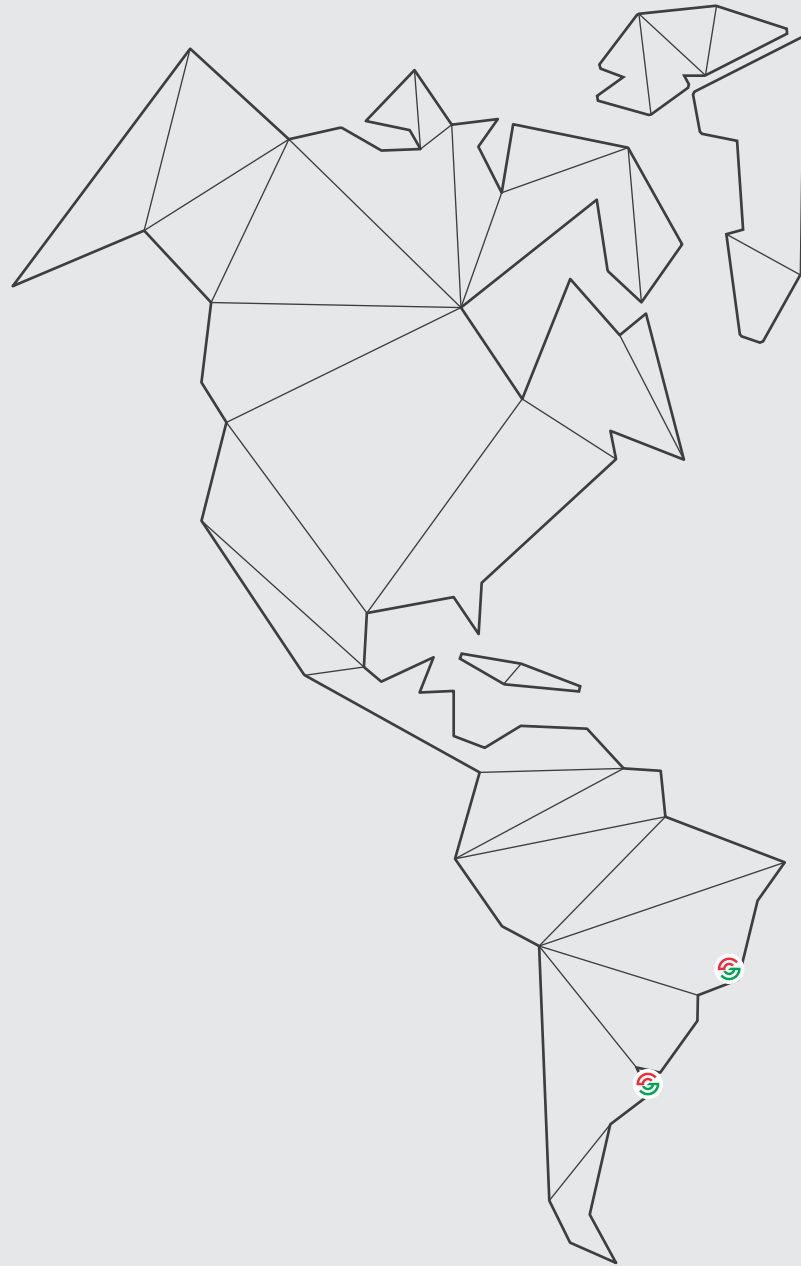


SCHLEGELGIESSE YOUR TOP PARTNER ALL OVER THE WORLD.

SchlegelGiesse is the international division of Tyman PLC, a company listed on the London Stock Exchange. SchlegelGiesse provides innovative integrated solutions for the doors and windows sector.

It operates in Europe, the Middle East, Africa, India, Asia, Australia and Latin America. Its headquarters are in Italy (Bologna) with production plants in the United Kingdom, Germany, China, Brazil and Australia, and offices in France, Greece, Spain, Turkey, India, the United Arab Emirates, New Zealand, Singapore and Argentina.

Our solutions for residential and commercial applications are unique in the market in terms of breadth and depth of range, service and know-how.



**132 MILLION EUROS
IN TURNOVER**



**8 MANUFACTURING
PLANTS**



19 OFFICES



850+ EMPLOYEES



100+ MARKETS COVERED



150+ PATENTS



HARDWARE FOR SLIDING CASEMENTS **A COMPLETE RANGE**

The type of opening that takes up minimum space inside the room.

- Maximum sash load capacity up to **200 kg**
- Closing with **recessed** or **window handles**
- Single or **multipoint locking**
- Finishing hardware

Giesse hardware for sliding doors and windows allow them to be built with large glass components and considerable weight, leaving the designer abundant creative possibilities. Door height, width and weight are no longer a problem with Giesse hardware.

The range includes technical solutions that aim to improve the fixture's resistance to break-in.

HARDWARE FOR SLIDING CASEMENTS HANDLES



BRIO LINE



PRATIKA LINE

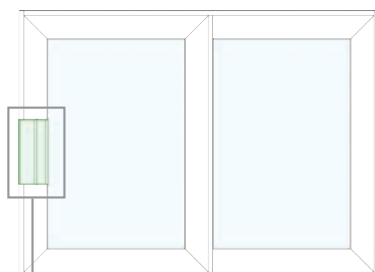


HARDWARE FOR SLIDING CASEMENTS

A COMPLETE RANGE

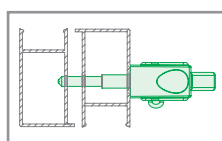
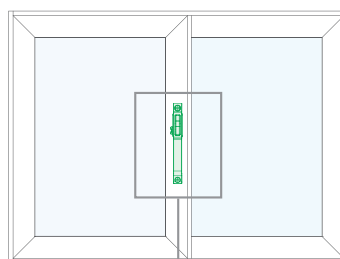
FRONT-FITTING HANDLES

Butterfly



Front-fitting handle with single locking point for windows and doors.

Delta Plus



Front-fitting handle for locking the central profile cross-section of the sliding window.



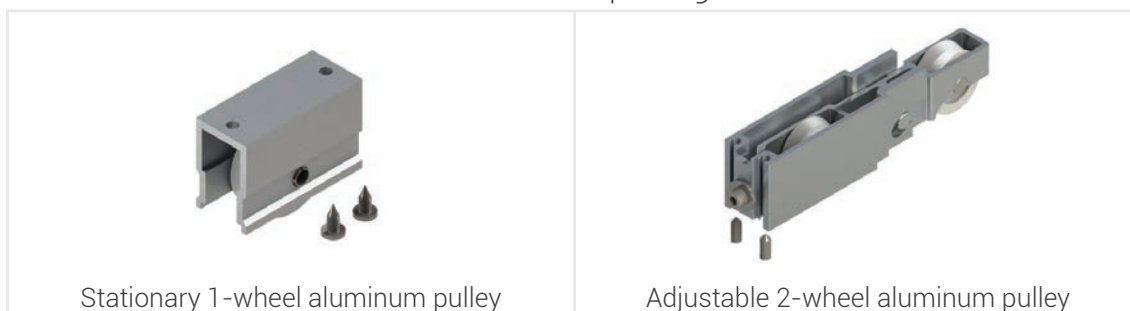
PULLEYS FOR SLIDING CASEMENTS

Giesse offers a variety of pulley models for sliding casements: with one or two wheels, stationary or adjustable, with different weight capabilities. The Carrera range has a load capacity of up to 45 kg per wheel, or a sash weight of up to 180 kg. The use of corrosion-proof materials gives Giesse pulleys excellent strength and durability, maintaining optimum performance levels.

Carrera pulleys



Aluminum pulleys





HARDWARE FOR SLIDING CASEMENTS

CHAMPION PLUS MULTI-LOCKING RANGE

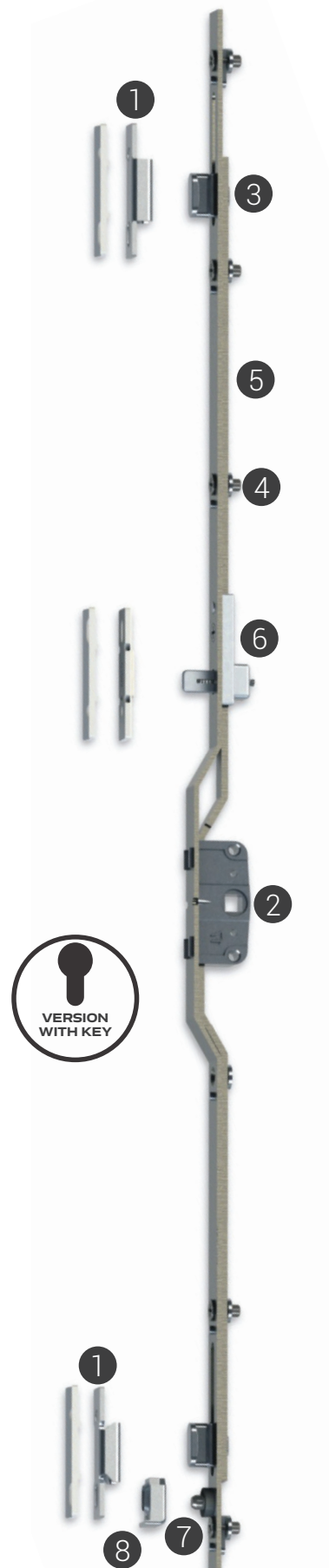
The Champion Plus hardware system is the ideal solution for **multipoint locking** for sliding doors. The Champion Plus multi-locking range is available with 1 to 3 locking points, which can be installed on both doors and windows.

Champion Plus also includes a **wide range of handles** and **locking kits**, to easily answer all construction needs.

Champion Plus has been **tested against corrosion** according to the EN 13126 and EN 1670-2008 standards and is proven to withstand exposure to saline mist for 240 hours at 4°C.

- **150 kg** resistance to strain
- **Easy** installation
- **High resistance** to corrosion
- **Wide range**
- **Styling** coordinated for all openings

- 1 Steel striker to position on the frame
- 2 Box and rotor in galvanized zamak with 43 mm center-to-center (C/C) distance
- 3 Closing nib in galvanized zamak
- 4 Support component for fastening the rod
- 5 Galvanized corrosion-proof steel rod
- 6 Incorrect movement safety device (optional)
- 7 Steel anti-lifting pin with rubber ring
- 8 Lift-proof striker



PRIMA, KORA & ASIA CHAMPION PLUS WINDOW HANDLES



In single or double version - 43 mm C/C distance - 7 mm square pin - In RAL and Trend finishes



CHAMPION PLUS RECESSED HANDLE

- 43 mm C/C distance
- 7 mm square pin in galvanized steel
- Can be paired with exterior recess handle
- In RAL and Trend finishes



CHAMPION PLUS EXTERIOR RECESS HANDLE

Can be paired with Prima, Asia and Kora window handles or the Champion Plus recessed handle. When installed on the outside of balcony doors, it allows the sliding sash to be moved from the outside.



BLANK RECESS HANDLE FOR OPPOSITE SASH

Blank recess handle, for installation on the sash opposite the sliding casement, which does not have any fastening mechanisms.



INCORRECT MOVEMENT SAFETY DEVICE

The incorrect movement safety device, installed on the multilock rod, increases the durability of the sliding casement: when the sash is open it prevents the system from reverting to the lock position, thus protecting the components from accidental knocks.



TILT AND SLIDE GS1000



**For wide openings:
side-hung casement
performance taking up
minimum space.**

- Maximum sash load capacity up to **200 kg**
- Closing with **Asia, Kora** and **Prima** handles
- **Multipoint** closing

The GS1000 tilt-and-slide is the ideal solution for large openings, with maximum practicality and minimum interior space take-up, guaranteeing **excellent performance**.

GS1000 combines the practicality of a sliding opening with the classic seal of a side-hung opening.

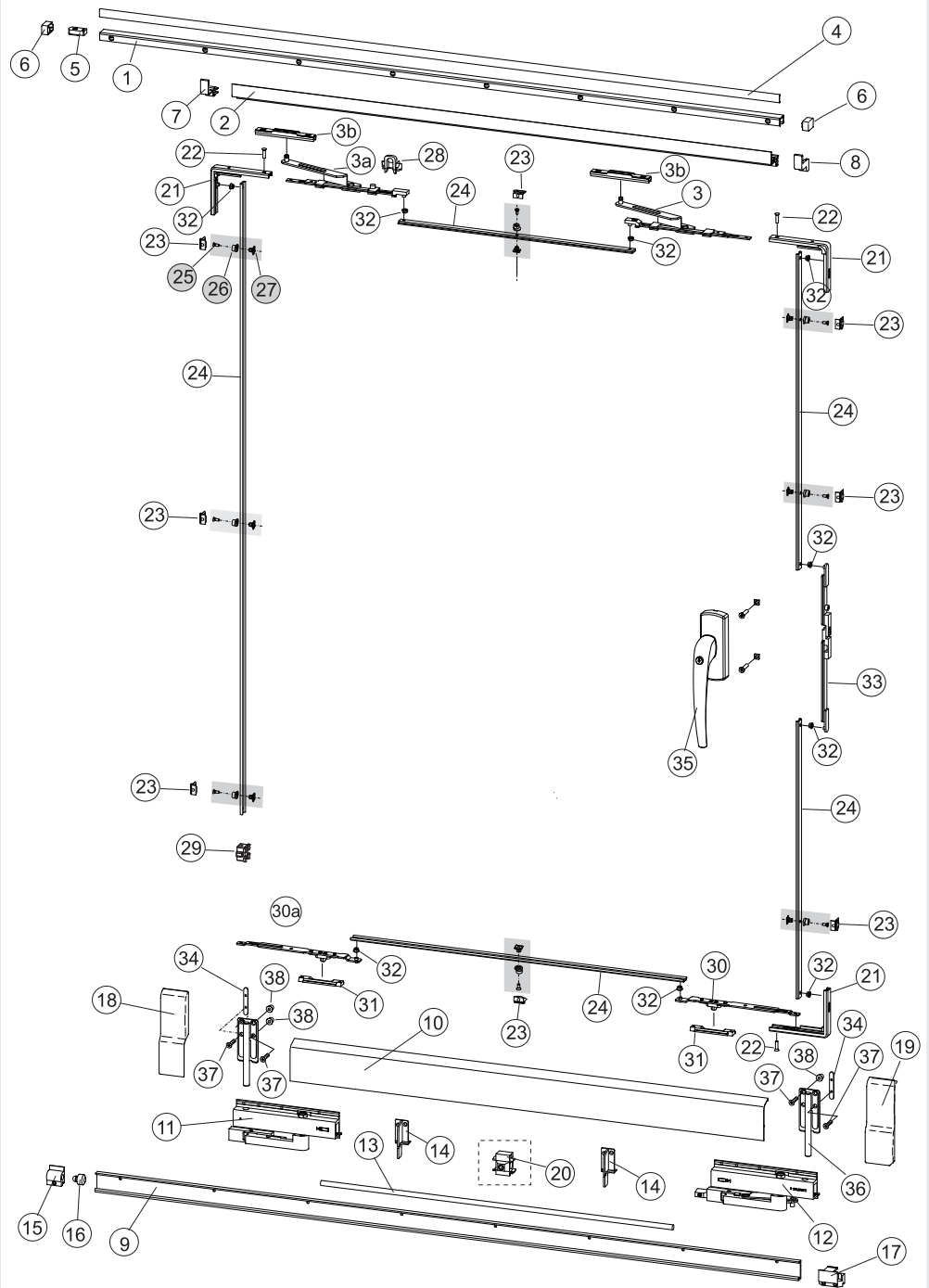
The tilt-and-turn opening facilitates **room aeration**, whereas the sliding opening is simple to operate without taking up space in the room it is installed in.

POSSIBLE CASEMENTS

Model	Sash width	Sash height	Maximum sash weight
Semi-automatic control version			
Semi-automatic functioning operated by special cremone bolt			
GS1000-HD 100	730-1300 mm	930-2400 mm	100 kg
GS1000-HD 160	730-2000 mm	930-2700 mm	160 kg
GS1000-HD 200	1080-2000 mm	930-2700 mm	200 kg
Manual control version			
Manual functioning using cremone bolt or standard window handle			
GS1000-ML	630-1480 mm	930-2400 mm	100 kg
GS1000-HL	630-1680 mm	930-2400 mm	160 kg

GS1000-HD - THE COMPONENTS

No.	Description
1	Upper rail
2	Upper guard
3	Arm
3a	Secondary arm
3b	Arm slide
4	Screw cover sheathing
5	Upper stop
6	Upper rail caps
7	LH upper guard plug
8	RH upper guard plug
9	Lower rail
10	Lower guard
11	Pulley
12	Master pulley
13	Connection rod
14	Lower guard supports
15	Lower stop
16	Lower stop buffer
17	Command striker </td
18	LH guard plug
19	RH guard plug
20	Connection rod guide
21	Corner drive
22	Corner drive fixing screw
23	Closing striker
24	Small rod
25	Pawl screw
26	Fastener pawl
27	Closing base pawl
28	Guide
29	Lift-proof component
30	RH automatic coupling lug
30a	LH automatic coupling lug
31	Automatic coupling striker
32	Adaption bushing
33	Cremona drive rod
34	Side reinforcement plate
35	Cremona
36	Side reinforcements
37	Side reinforcement screws
38	Side reinforcement rivets



Example of GS1000 configuration with semi-automatic control. Configuration may vary according to the model.

Models GS1000 ML and GS1000 HL with manual control are also available for the R40 system.

Configurator available on www.giesse.it



LIFT AND SLIDE SYSTEM GS3000



The ideal solution for extended windows, with large casements and high load capacity.

- Maximum load capacity up to **400 kg**
- Closing with single or double handle, also with **key**
- **Multipoint lock**
- Automated opening

The GS3000 system for lift and slide fixtures is a comprehensive range of hardware for the installation of sashes with a maximum weight of **400 kg** and maximum height 3750 mm, with **window handles in three different designs** and numerous varieties of finish.

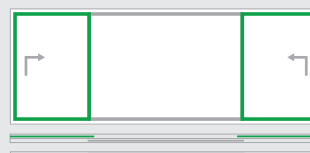
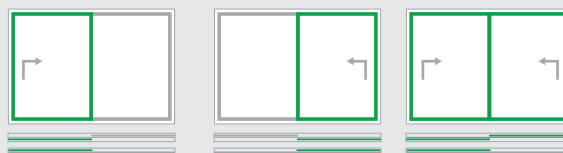
The opening and closing movement is fluid and silent. The system has a **safety device** to dampen the handle's return movement.

Another strength of the GS3000 system for lift and slide fixtures is the option of **room micro-ventilation** by means of a special locking point.

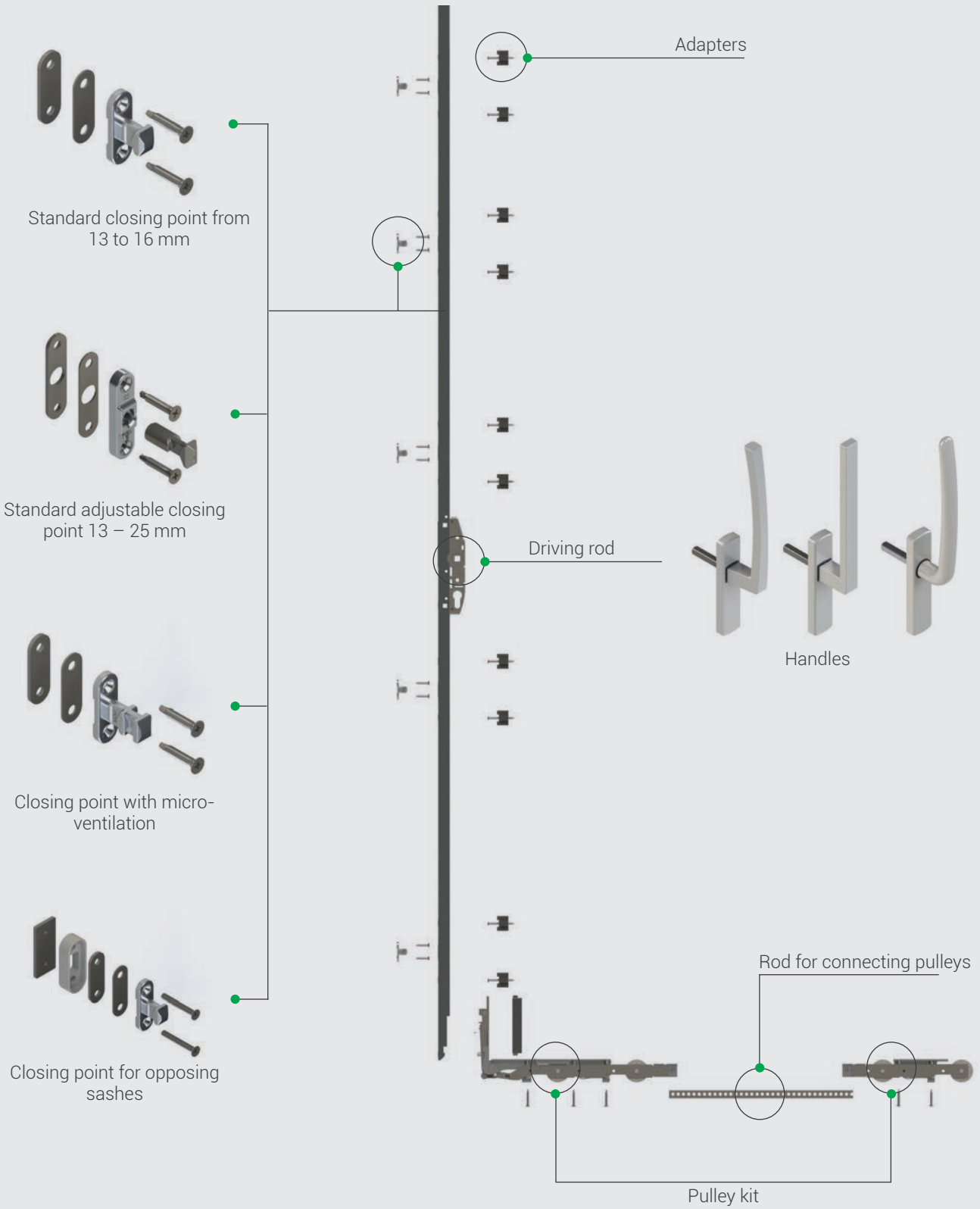
The range includes technical solutions that aim to improve the fixture's resistance to break-in.

POSSIBLE CASEMENTS

Model	Sash width	Sash height	Maximum sash weight
GS3000-150	600 – 2400 mm	1150 – 3750 mm	150 kg
GS3000-300/400	720 – 3350 mm	1150 – 3750 mm	400 kg



GS3000 - THE COMPONENTS

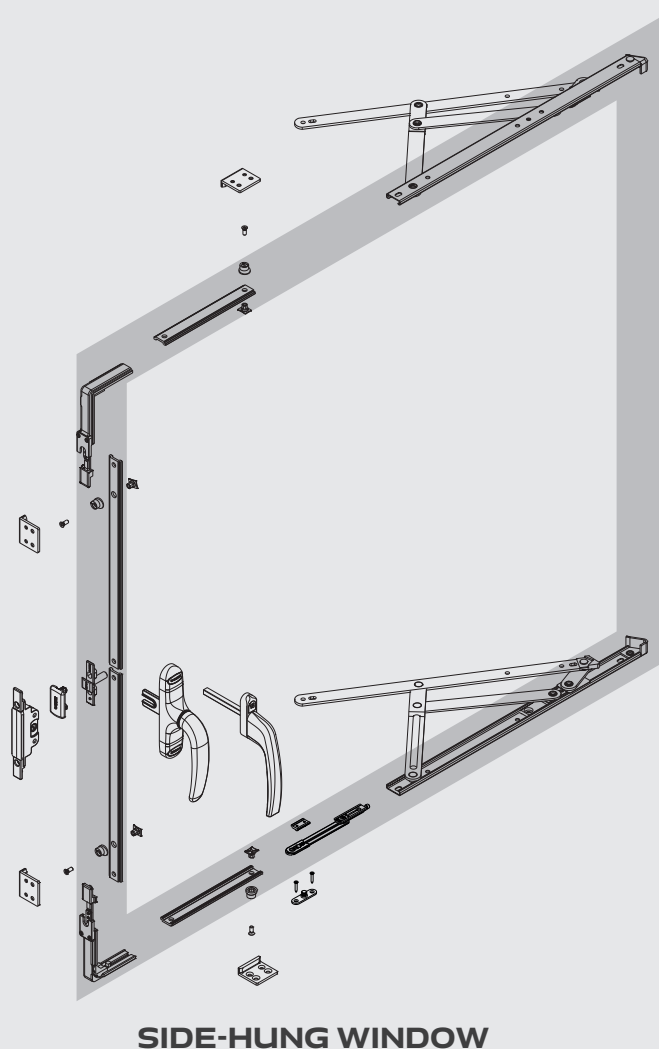
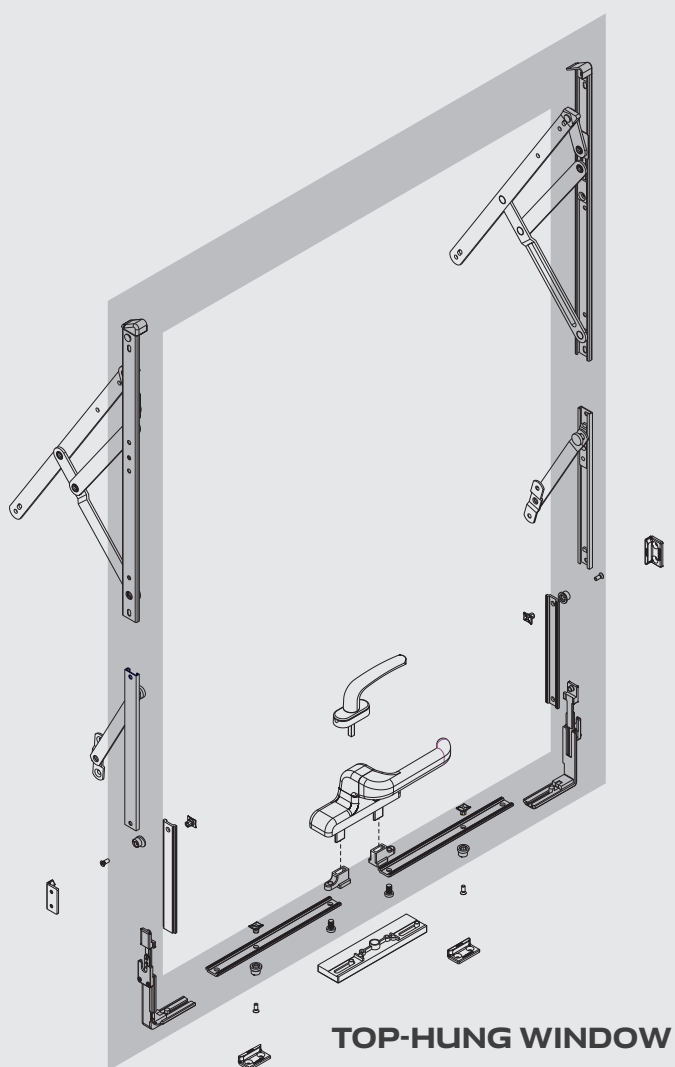


HARDWARE FOR OUTWARD OPENING

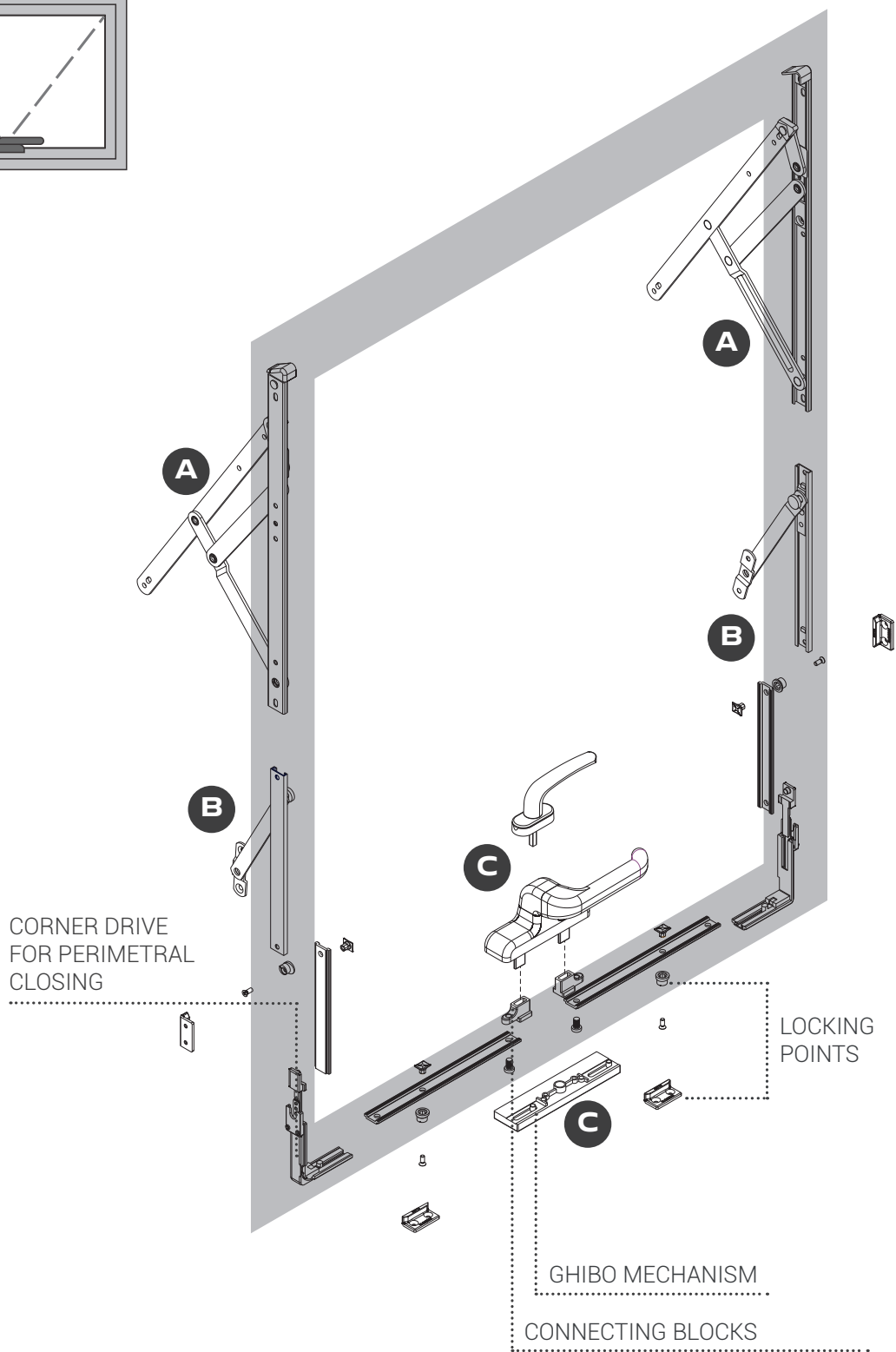
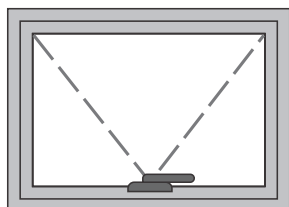


Hardware for cutting-edge architectural solutions.

- For windows with **side-hung** outward opening, **top-hung** opening and **parallel** opening
- Closing with **Asia**, **Euro** and **Prima** handles
- Wide range of **arms**, including limitation arms
- Single or **multipoint** locking
- Wide range of **automations**



OUTWARD OPENING HARDWARE FOR TOP-HUNG WINDOW



Top-Hung arms **A**

GS HD type P	for sashes from 50 to 180 kg
GS HD type M	for sashes from 12 to 35 kg
GS HD type A	for sashes from 16 to 32 kg
GS HD Euro Groove	for sashes from 50 to 100 kg
GS HD type TS	for sashes from 50 to 100 kg



Limitation arms **B**

Type L	can be combined with GS HD arms Type P and A
Type LASER (*)	can be combined with GS HD arms Type P and A
Type I	can be combined with GS HD arms Type P and A
Type N	can be combined with GS HD arms Type M
PIVOT HINGE type	can be combined with GS HD arms Type P and A

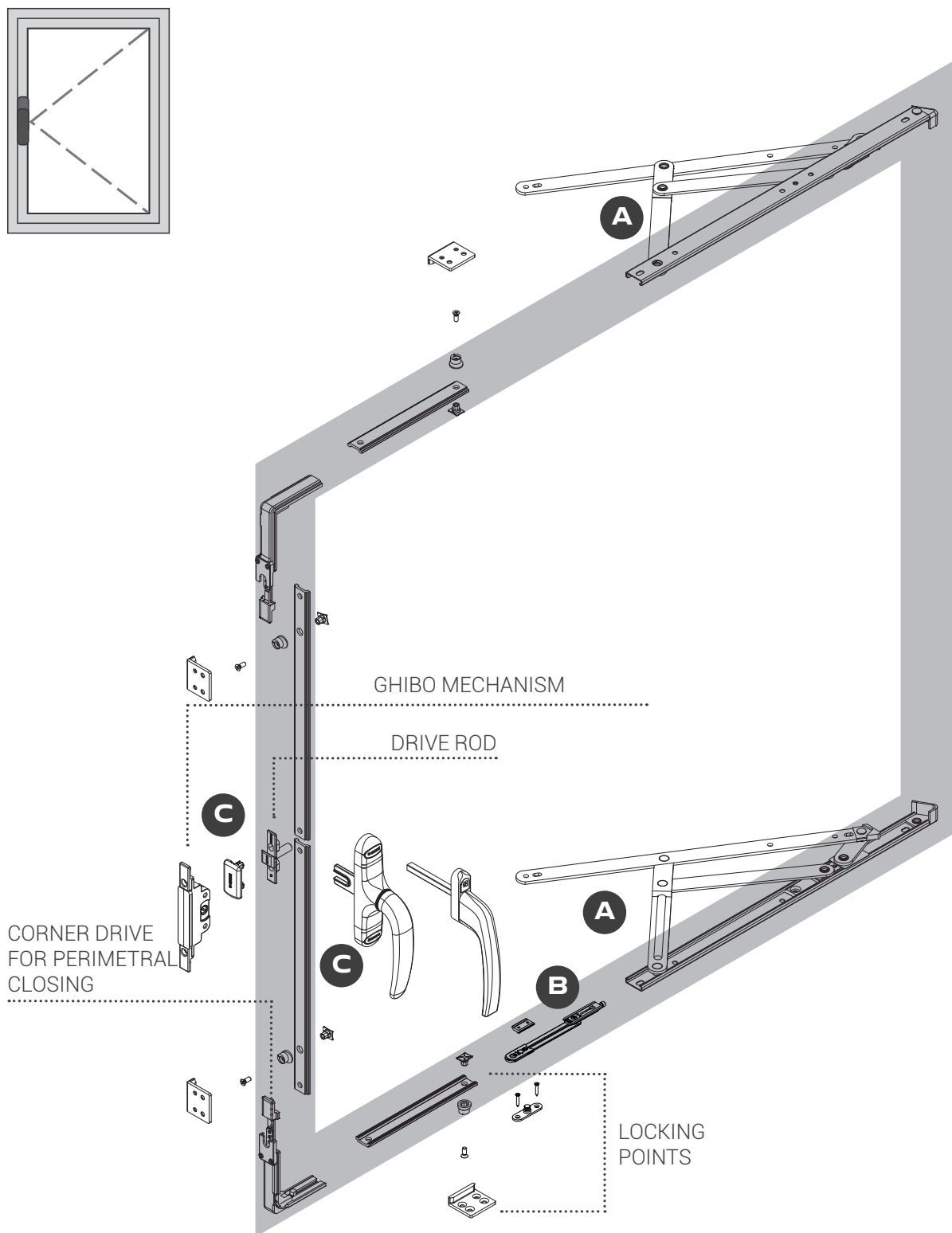


Mechanisms **C**

Euro CW2 cremone	+ blocks	two-way movement
Unica CW2 cremone	+ blocks	two-way movement
Euro CW1 cremone	+ small rod	one-way movement
Kora offset window handle	+ Ghibo one-way mechanism	one-way movement
Prima window handle	+ Ghibo one-way mechanism	one-way movement



OUTWARD OPENING HARDWARE FOR SIDE-HUNG WINDOW



Side-hung arms **A**

GS HD type C	for sashes from 36 to 45 kg
GS HD type M	for sashes from 15 to 21 kg
GS HD type A	for sashes from 14 to 22 kg
GS HD Euro Groove	for sashes from 35 to 60 kg
GS HD type TS	for sashes from 35 to 60 kg



Limitation arms **B**

PIVOT HINGE type	can be combined with GS HD arms Type C
-------------------------	--



Mechanisms **C**

Unica Apex cremone	+ pins	two-way movement
Unica cremone	+ drive rod	one-way movement
Asia 0-90 cremone	+ drive rod	one-way movement
Prima / Bas window handle	+ Ghibo two-way mechanism	two-way movement
Prima / Bas window handle	+ Ghibo one-way mechanism	one-way movement



Unica cremone

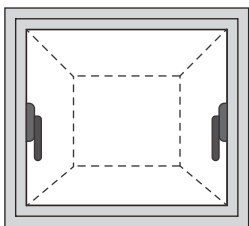
Asia cremone

Prima window handle

Bas window handle

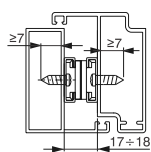


OUTWARD OPENING PARALLEL OPENING

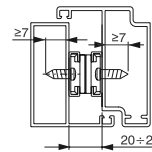


PARALLEL ARMS

- With single or double cross
- It is possible to combine single-cross arms with double-cross arms when the arm thickness is the same.
- If the casement weighs more than 60 kg or is larger than 1250 x 1250 mm, an automated sash opening and closing device is required.

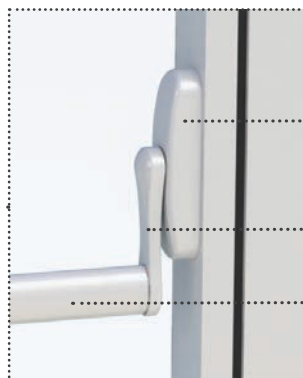
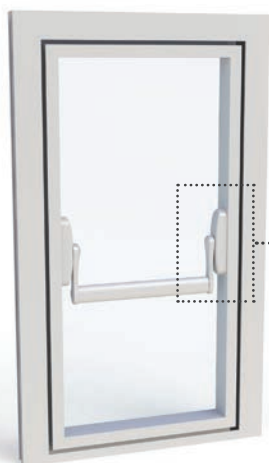


Single or double
parallel arm
16.9 mm



Single and
double parallel
arm 20 mm

CW BAR MECHANISM WITH CREMONES FOR PARALLEL OPENING



CREMONE MECHANISM AND
COVER

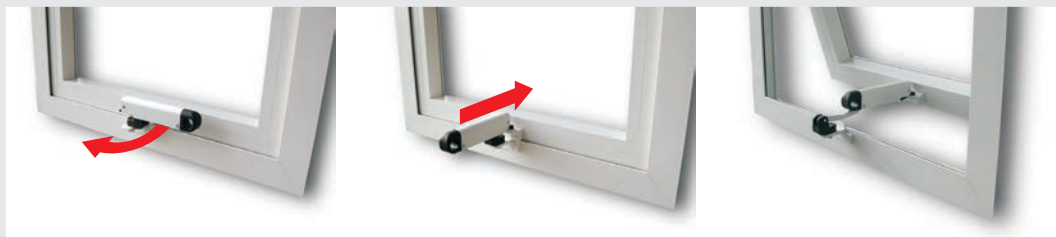
HANDLE

BAR

COMPONENTS FOR SINGLE POINT LOCKING



OMBU arm



Euro line Bravo flat handle



Prima line Bravo flat handle



OUTWARD OPENING OS OPERATOR 2.0

OS Operator is the only operator that allows whole mosquito screens to be fitted inside easily, thanks to the **cremone positioning on the frame**.

- **Multi-locking** system along the entire perimeter of the window
- Wide range of window sizes
- For **top-hung** and **side-hung** windows
- Limited casement opening



SPECIFIC SYSTEM DESIGN

OS operator was designed at the same time as the window profile that houses it, to obtain a product that fully satisfies functionality and performance requirements.

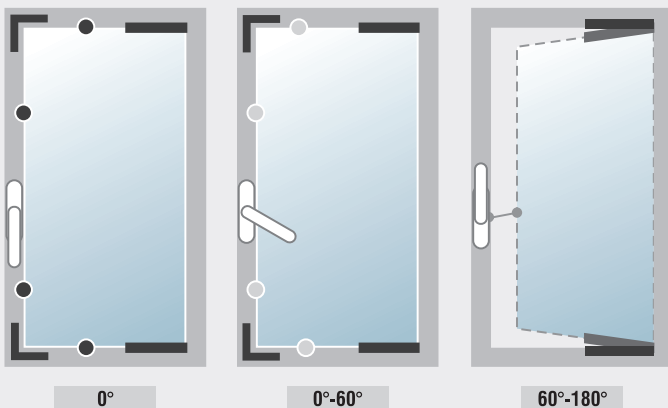
Therefore, OS Operator requires a specific cross section of the profile to be applicable.

The SchlegelGiesse Technical Service is at our customers' service for advice regarding the system's design.



TESTED

OS Operator has been successfully tested to **15,000 cycles** in both top-hung and side-hung configurations, according to AAMA test specifications.



OPERATION

With the cremone at **0°** rotation, the window is closed and the locking points are engaged. By turning the cremone **60°**, the locking points are released and during the following **120°** movement, the mechanism pushes the sash to maximum opening (depending on the length of the OS arm).



AUTOMATIONS



CHAIN ACTUATORS

- To automate bottom-hung, top-hung, pivoting and skylight windows
- Ideal for both residential and industrial applications
- 24 V RWA versions for smoke and heat extraction systems
- "Syncro" version provides two or more synchronized thrust points in the same window.



Varia
230 V AC
24 V DC



Varia Slim Base
230 V AC
24 V DC



Varia Slim
230 V AC
24 V DC



Varia Slim Plus
230 V AC
24 V DC



Varia Slim Small
24 V DC



Varia Tube
230 V AC
24 V DC RWA



ST 450
230 V AC

ROD ACTUATORS

- To automate windows that require high reliability and resistance to heavy loads
- Ideal for skylight, brise soleil and top-hung windows
- Featuring speed, low noise and extreme versatile application.

RACK ACTUATORS

- Ideal for driving top-hung, skylight, dormer, dome and brise soleil windows, as well as sliding doors
- Available in different strokes with thrust force up to 800 N and lengths up to 550 mm, with the option of adding a second thrust point
- LC FIRE is the version for combination with smoke and heat extraction systems.



LC
230 V AC
24 V DC



LC Fire
24 V DC RWA



INWARD OPENING RETRACTABLE C.H.I.C. SYSTEM

The world of the aluminum casement is evolving towards an aesthetically and technologically advanced window with ultra-slim profiles and concealed hardware.

The possibility of minimizing the dimensions of the sash and frame profiles results in a more modern, architecturally innovative look, but it also means more daylight and improved thermal performance, thanks to the increased area of glass for the same size opening.



MAXIMUM LOAD CAPACITY 100 KG OR 130 KG

A maximum load capacity compatible with most application needs for all housing, residential and public building solutions.

180° OPENING

C.H.I.C. allows a 180° opening for both side-hung and tilt-and-turn sashes.

FAST, EASY INSTALLATION

Fewer components and installation stages mean faster and simpler production.

3D HINGE ADJUSTMENT

Door height, side and compression adjustment is possible, either in the workshop or after the window has been installed.

STORAGE OPTIMIZATION

Color choice is no longer a problem. With the hardware concealed inside the profile, C.H.I.C. simplifies warehouse organization by completely eliminating the need to manage finishes.



C.H.I.C. Is intended to meet the construction needs of all environments in which tilt-and-turn sashes are installed with the possibility of 180° opening, guaranteeing an architecturally modern design combined with simple and quick assembly.

Side-hung



Tilt-and-turn window



CHIC 100

CHIC 130

- 180° opening
- Load capacity 100 kg or 130 kg
- 3D hinge adjustment
- Adjustable fastening element



- 180° opening
- Load capacity 100 kg or 130 kg
- 3D hinge adjustment
- Micro-ventilation as standard
- Same product for Standard and Logica



STANDARD AND LOGICA TILT-AND-TURN IN ONE MECHANISM

Logica is a solution specially suited to situations where full opening of the sash needs to be impeded. Because it is keyless, only bottom-hung sash opening is possible.

MICRO-VENTILATION AS STANDARD

Simply rotating the mechanism 135° opens the sash a few millimeters, allowing the air to flow and thereby reducing condensation inside the house.



INWARD OPENING RETRACTABLE C.H.I.C. SYSTEM

CHIC 100 CONCEALED TILT-AND-TURN WINDOW



Item code	Description	Sash width	Version	A
043550001	C.H.I.C. 100 - Kit A/R + T1 - RH arm	470 - 700 mm	Micro	-
043550002	C.H.I.C. 100 - Kit A/R + T1 - LH arm		Micro	-
043560001	C.H.I.C. 100 - Kit A/R + T2 - RH arm	600 - 1500 mm	Micro	148-178 mm
043560002	C.H.I.C. 100 - Kit A/R + T2 - LH arm		Micro	148-178 mm
043590001	C.H.I.C. 100 - Kit A/R + T1 - RH arm (without micro)	445 - 470 mm	-	-
043590002	C.H.I.C. 100 - Kit A/R + T1 - LH arm (without micro)		-	-

CHIC 130 CONCEALED TILT-AND-TURN WINDOW

Item code	Description	Sash width	Version	A
044250001	C.H.I.C. 130 - Kit A/R + T1 - RH arm	470 - 700 mm	Micro	-
044250002	C.H.I.C. 130 - Kit A/R + T1 - LH arm		Micro	-
044260001	C.H.I.C. 130 - Kit A/R + T2 - RH arm	600 - 1500 mm	Micro	148-178 mm
044260002	C.H.I.C. 130 - Kit A/R + T2 - LH arm		Micro	148-178 mm

CHIC 100 CONCEALED HINGE

Item code	Description
043540001	C.H.I.C. 100 - Sash hinge - RH
043540002	C.H.I.C. 100 - Sash hinge - LH

CHIC 130 CONCEALED HINGE

Item code	Description
044240001	C.H.I.C. 130 - Sash hinge - RH
044240002	C.H.I.C. 130 - Sash hinge - LH



SKG** AND SKG*** COMPONENTS FOR SASH AND TILT-AND-TURN WINDOW

The certified SKG** and SKG*** components for inward opening aluminum windows are for customers who want **RC2 or RC3 certification** for their window and are looking to invest in the safety of their products.

The burglar-proof components stem from a combination of different components: mechanism for sash or tilt-and-turn window, cremone with key and burglar-proof locking points.



CHIC 100

TABLE OF MAXIMUM AVAILABLE GLASS THICKNESS [MM]

2500	33	27	23	20	18	16	15	14	13	12	11	
2400	33	27	23	20	18	16	15	14	13	12	11	
2300	34	28	24	21	19	17	16	14	13	12	11	
2200	36	30	25	22	20	18	16	15	14	13	12	
2100	37	31	27	23	21	19	17	16	14	13	12	
2000	39	33	28	25	22	20	18	16	15	14	13	
1900	41	34	30	26	23	21	19	17	16	15	14	
1800	44	36	31	27	24	22	20	18	17	16	15	
1700	46	38	33	29	26	23	21	19	18	16	15	
1600	49	41	35	31	27	25	22	20	19	17	15	
1500	50	44	37	33	29	26	24	22	20	17	15	
1400	50	47	40	35	31	28	25	23	20	17	15	
1300	50	50	43	38	34	30	27	24	20	17	15	
1200	50	50	47	41	36	33	28	24	20	17	15	
1100	50	50	50	45	40	34	28	24	20	17		
1000	50	50	50	49	42	34	28	24	20			
900	50	50	50	50	42	34	28	24				
800	50	50	50	50	42	34	28					
700	50	50	50	50	42	34						
600	445	500	600	700	800	900	1000	1100	1200	1300	1400	1500

TABLE OF MAXIMUM ALLOWABLE LOAD CAPACITY [KG]

2500	100	100	100	100	100	100	100	100	100	100	100	100
2400	100	100	100	100	100	100	100	100	100	100	100	100
2300	100	100	100	100	100	100	100	100	100	100	100	100
2200	100	100	100	100	100	100	100	100	100	100	100	100
2100	100	100	100	100	100	100	100	100	100	100	100	100
2000	100	100	100	100	100	100	100	100	100	100	100	100
1900	100	100	100	100	100	100	100	100	100	100	100	100
1800	100	100	100	100	100	100	100	100	100	100	100	100
1700	100	100	100	100	100	100	100	100	100	100	98	
1600	100	100	100	100	100	100	100	100	100	100	99	92
1500	100	100	100	100	100	100	100	100	100	100	93	87
1400	100	100	100	100	100	100	100	100	100	93	87	81
1300	100	100	100	100	100	100	100	100	94	87	80	75
1200	100	100	100	100	100	100	100	95	87	80	74	69
1100	100	100	100	100	100	95	87	79	73	68		
1000	100	100	100	100	96	87	79	72	67			
900	100	100	100	98	87	78	71	65				
800	100	100	99	87	77	69	63					
700	100	100	87	76	67	61						
600	445	500	600	700	800	900	1000	1100	1200	1300	1400	1500

CHIC 130

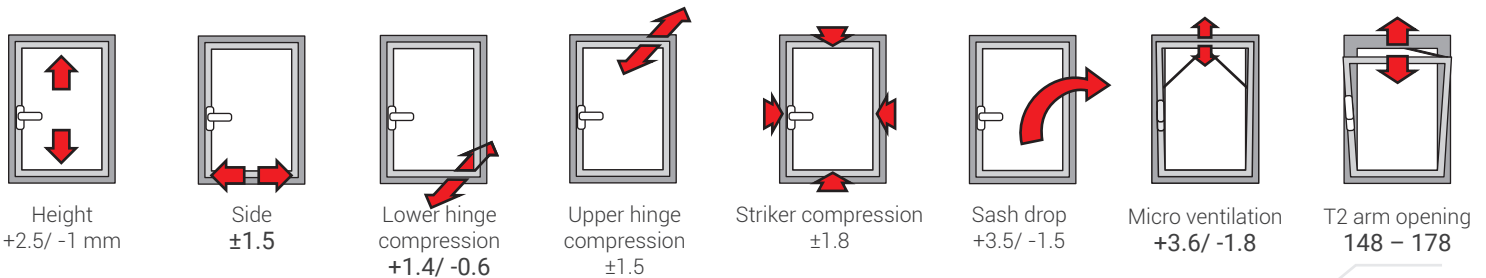
TABLE OF MAXIMUM AVAILABLE GLASS THICKNESS [MM]

2800	35	29	25	22	19	17	16	14	13	12	12		
2700	37	31	26	23	20	18	17	15	14	13	12		
2600	39	32	28	24	21	19	18	16	15	14	13	12	
2500	43	35	30	27	24	21	19	18	16	15	14	13	
2400	43	35	30	27	24	21	19	18	16	15	14	13	
2300	44	37	32	28	25	22	20	18	17	16	15	14	
2200	46	39	33	29	26	23	21	19	18	17	15	14	
2100	49	40	35	30	27	24	22	20	19	17	16	15	
2000	51	43	36	32	28	26	23	21	20	18	17	16	
1900	54	45	38	34	30	27	24	22	21	19	18	17	
1800	57	47	40	35	31	28	26	24	22	20	19	18	
1700	60	50	43	38	33	30	27	25	23	21	20	18	
1600	60	53	46	40	35	32	29	27	25	23	21	18	
1500	60	57	49	43	38	34	31	28	26	24	21	18	
1400	60	60	52	46	40	36	33	30	28	24	21	18	
1300	60	60	56	49	44	39	36	33	28	24	21	18	
1200	60	60	60	53	47	43	39	33	28	24	21		
1100	60	60	60	58	52	46	39	33	28	24			
1000	60	60	60	60	57	47	39	33	28				
900	60	60	60	60	58	47	39	33					
800	60	60	60	60	58	47	39						
700	60	60	60	60	58	47							
600	470	500	600	700	800	900	1000	1100	1200	1300	1400	1500	1600

TABLE OF MAXIMUM ALLOWABLE LOAD CAPACITY [KG]

2800	124	124	124	124	124	124	124	124	124	124	124	124		
2700	126	126	126	126	126	126	126	126	126	126	126	126		
2600	128	128	128	128	128	128	128	128	128	128	128	128	128	
2500	130	130	130	130	130	130	130	130	130	130	130	130	130	
2400	130	130	130	130	130	130	130	130	130	130	130	130	130	
2300	130	130	130	130	130	130	130	130	130	130	130	130	130	
2200	130	130	130	130	130	130	130	130	130	130	130	130	130	
2100	130	130	130	130	130	130	130	130	130	130	130	130	130	
2000	130	130	130	130	130	130	130	130	130	130	130	130	130	
1900	130	130	130	130	130	130	130	130	130	130	130	130	130	
1800	130	130	130	130	130	130	130	130	130	130	130	130	130	
1700	130	130	130	130	130	130	130	130	130	130	130	130	127	
1600	130	130	130	130	130	130	130	130	130	130	130	127	119	
1500	130	130	130	130	130	130	130	130	130	130	130	128	119	112
1400	130	130	130	130	130	130	130	130	130	130	129	119	111	104
1300	130	130	130	130	130	130	130	130	129	119	111	103	97	
1200	130	130	130	130	130	130	130	130	119	110	102	95		
1100	130	130	130	130	130	130	130	119	109	101	94			
1000	130	130	130	130	130	119	108	99	92					
900	130	130	130	130	119	107	98	90						
800	130	130	130	119	106	95	87							
700	130	130	119	104	93	84								
600	470	500	600	700	800	900	1000	1100	1200	1300	1400	1500	1600	

ADJUSTMENTS [MM]



INWARD OPENING FUTURA TILT-AND- TURN



Futura 3D is the system for tilt-and-turn windows with micrometric adjustments in three dimensions, available in different versions distinguished by type and weight.

ADJUSTMENTS

The FUTURA 3D tilt-and-turn window can tilt in all directions. It is particularly recommended after installation.

RANGE

FUTURA 3D 130 micro	FUTURA 3D 130 lgc
CLASSIC 3D 80 micro	CLASSIC 3D 80 lgc
FUTURA 3D R	FUTURA 3D R lgc
FUTURA 3D ARCO	FUTURA 3D FSQ
FUTURA 3D 170 HP Invisible	FUTURA 3D 170 HP Invisible lgc

MICRO-VENTILATION

Micro-ventilation is a device installed on the indoor side of the window, allowing the sash to stay open just a few millimeters to let the air circulate while keeping the room temperature almost unchanged.

Simply rotating the mechanism 135° opens the sash a few millimeters, allowing the air to flow and thereby reducing condensation inside the house.

LOGICA

Logica is a solution specially suited to situations where full opening of the sash needs to be impeded. Combined with a mechanism with key, the Logica solution allows only bottom-hung sash opening. Complete sash opening, for example for cleaning purposes, is possible only by inserting the key into the mechanism.

FUTURA 3D TILT-AND-TURN WINDOW VERSIONS: TYPE AND WEIGHT

FUTURA 3D	3D adjustments	Micro-ventilation	Logica	SKG **/**	Maximum load capacity
FUTURA 3D 130	Yes	Yes	Yes	Yes	140 kg
CLASSIC 80	Yes	Yes	Yes	Yes	80 kg
FUTURA 3D R	Yes	No	Yes	No	110 kg
FUTURA 3D ARCHED AND SLOPING	Yes	No	No	No	80 kg
FUTURA 3D 170 HP INVISIBLE	Yes	Yes	Yes	No	170 kg

INWARD OPENING TILT-AND-TURN WINDOW

CERTIFICATION

FUTURA 3D 130 is certified according to the RAL 607/3 program (classification test pursuant to EN13126-8:2006 plus periodic monitoring of the production process).



FUTURA 3D 130 is the system for tilt-and-turn windows with a maximum load capacity of 140 kg. Available in the basic and Logica versions.

ADJUSTMENTS

The adjustments are micrometric and independent from each other.

Direction	Adjustment
Height	+ 1.5/ - 0.5 mm
Side	± 1 mm
Lower hinge compression	± 0.3 mm
Upper hinge compression	± 1.5 mm
Striker compression	± 1.8 mm
Sash drop	+ 3.5/ - 1.5 mm
Micro-ventilation	+ 3.6/ - 1.8 mm

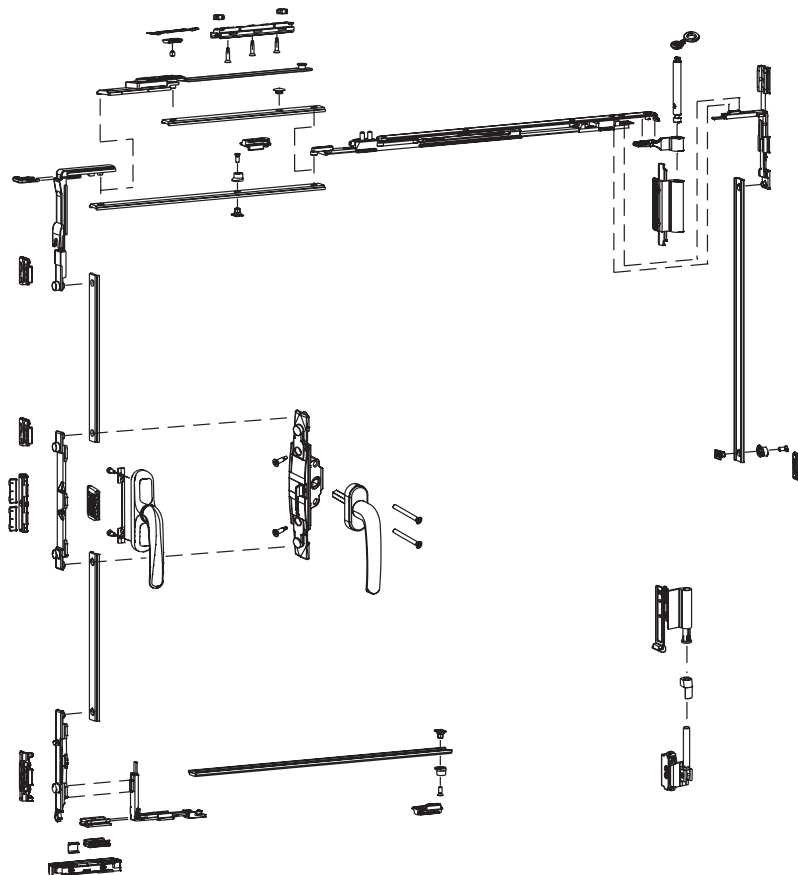


TABLE OF MAXIMUM AVAILABLE GLASS THICKNESS [MM]

3000	35	28	24	21	19	17	15	14	13	12	11	11	10	
2900	35	29	25	22	20	18	16	15	14	13	12	11	10	
2800	36	30	26	23	20	18	17	15	14	13	12	11	10	
2700	38	31	27	24	21	19	17	16	15	13	13	12	11	
2600	39	33	28	25	22	20	18	16	15	14	13	12	11	
2500	44	37	31	27	24	22	20	18	17	16	15	14	13	
2400	46	38	33	29	25	23	21	19	18	16	15	14	13	
2300	48	40	34	30	27	24	22	20	18	17	16	15	14	
2200	50	42	36	31	28	25	23	21	19	18	17	16	15	
2100	50	44	37	33	29	26	24	22	20	19	17	16	15	
2000	50	46	39	34	31	27	25	23	21	20	18	17	16	
1900	50	48	41	36	32	29	26	24	22	21	19	18	16	
1800	50	50	44	38	34	31	28	25	23	22	20	18	16	
1700	50	50	46	40	36	32	29	27	25	23	21	18	16	
1600	50	50	49	43	38	34	31	29	26	24	21	18	16	
1500	50	50	50	46	41	37	33	31	27	24	21	18	16	
1400	50	50	50	49	44	39	36	32	27	24	21	18	16	
1300	50	50	50	50	47	42	38	32	27	24	21	18		
1200	50	50	50	50	46	38	32	27	24	21				
1100	50	50	50	50	50	46	38	32	27					
1000	50	50	50	50	50	46	38	32	27					
900	50	50	50	50	50	46	38	32						
800	50	50	50	50	50	46	38							
700	50	50	50	50	50	46								
600	500	600	700	800	900	1000	1100	1200	1300	1400	1500	1600	1700	1800

TABLE OF MAXIMUM ALLOWABLE LOAD CAPACITY [KG]

3000	130	130	130	130	130	130	130	130	130	130	130	130	130	130	
2900	130	130	130	130	130	130	130	130	130	130	130	130	130	130	
2800	130	130	130	130	130	130	130	130	130	130	130	130	130	130	
2700	130	130	130	130	130	130	130	130	130	130	130	130	130	130	
2600	130	130	130	130	130	130	130	130	130	130	130	130	130	130	
2500	140	140	140	140	140	140	140	140	140	140	140	140	140	130	
2400	140	140	140	140	140	140	140	140	140	140	140	140	140	130	
2300	140	140	140	140	140	140	140	140	140	140	140	140	140	130	
2200	140	140	140	140	140	140	140	140	140	140	140	140	140	130	
2100	140	140	140	140	140	140	140	140	140	140	140	140	140	130	
2000	140	140	140	140	140	140	140	140	140	140	140	140	140	130	
1900	140	140	140	140	140	140	140	140	140	140	140	140	140	139	
1800	140	140	140	140	140	140	140	140	140	140	140	140	140	132	
1700	140	140	140	140	140	140	140	140	140	140	140	140	133	125	
1600	140	140	140	140	140	140	140	140	140	140	140	140	134	126	
1500	140	140	140	140	140	140	140	140	140	140	140	135	126	118	
1400	140	140	140	140	140	140	140	140	140	140	137	127	118	111	
1300	140	140	140	140	140	140	140	140	140	138	127	118	110	104	
1200	140	140	140	140	140	140	140	140	140	128	118	110	103	96	
1100	140	140	140	140	140	140	140	129	118	109	101	95			
1000	140	140	140	140	140	130	118	108	100	93					
900	140	140	140	140	131	118	108	99	91						
800	140	140	140	133	118	106	97	89							
700	140	140	135	118	105	95	86								
600	140	138	118	104	92	83									
	350	500	600	700	800	900	1000	1100	1200	1300	1400	1500	1600	1700	1800



INWARD OPENING TILT-AND-TURN WINDOW

CLASSIC 3D
80 micro

CLASSIC 3D
80 lgc

CLASSIC 3D 80 is the system for tilt-and-turn windows with a maximum load capacity of 90 kg. Available in the basic and Logica versions.

ADJUSTMENTS

The adjustments are micrometric and independent from each other.

Direction	Adjustment
Height	+ 1.5/ - 0.5 mm
Side	± 1 mm
Lower hinge compression	± 0.3 mm
Upper hinge compression	± 1.5 mm
Striker compression	± 1.8 mm
Sash drop	+ 3.5/ - 1.5 mm
Micro-ventilation	+ 3.6/ - 1.8 mm

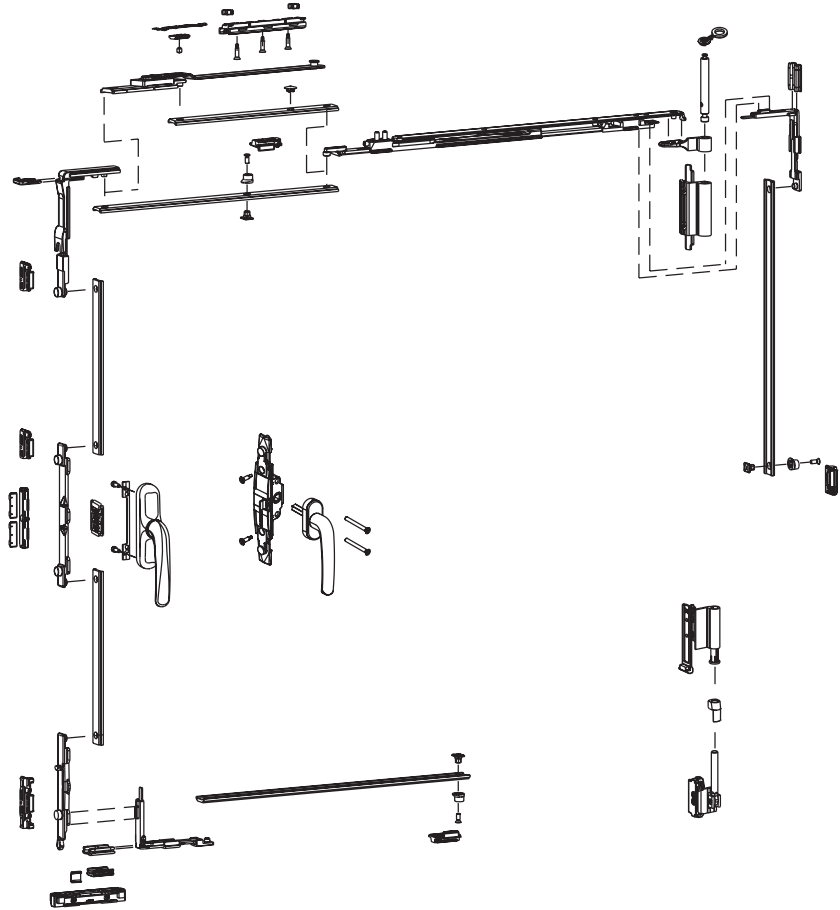


TABLE OF MAXIMUM AVAILABLE GLASS THICKNESS [MM]

2500	25	21	18	16	14	13	11	10	10	
2400	26	22	19	16	15	13	12	11	10	
2300	27	23	19	17	15	14	12	11	10	
2200	29	24	20	18	16	14	13	12	11	
2100	30	25	21	19	17	15	14	12	11	
2000	31	26	22	20	17	16	14	13	12	
1900	33	28	24	21	18	17	15	14	13	
1800	35	29	25	22	19	17	16	15	13	
1700	37	31	26	23	21	18	17	15	14	
1600	39	33	28	25	22	20	18	16	15	
1500	42	35	30	26	23	21	19	17	16	
1400	45	37	32	28	25	22	20	19	17	
1300	48	40	34	30	27	24	22	20	17	
1200	50	44	37	33	29	26	24	20	17	
1100	50	48	41	36	32	29	24	20		
1000	50	50	45	39	35	29	24			
900	50	50	50	44	35	29				
800	50	50	50	45	35					
700	50	50	50	45						
600	50	50	50	45						
	350	500	600	700	800	900	1000	1100	1200	1300

TABLE OF MAXIMUM ALLOWABLE LOAD CAPACITY [KG]

2500	80	80	80	80	80	80	80	80	80	
2400	80	80	80	80	80	80	80	80	80	
2300	80	80	80	80	80	80	80	80	80	
2200	80	80	80	80	80	80	80	80	80	
2100	80	80	80	80	80	80	80	80	80	
2000	80	80	80	80	80	80	80	80	80	
1900	80	80	80	80	80	80	80	80	80	
1800	80	80	80	80	80	80	80	80	80	
1700	80	80	80	80	80	80	80	80	80	
1600	80	80	80	80	80	80	80	80	80	
1500	80	80	80	80	80	80	80	80	80	
1400	80	80	80	80	80	80	80	80	80	
1300	80	80	80	80	80	80	80	80	78	
1200	80	80	80	80	80	80	80	79	73	
1100	80	80	80	80	80	80	79	73	67	
1000	80	80	80	80	80	80	73	66		
900	80	80	80	80	73	66				
800	80	80	80	73	65					
700	80	80	73	64						
600	80	80	73	64						
	350	500	600	700	800	900	1000	1100	1200	1300

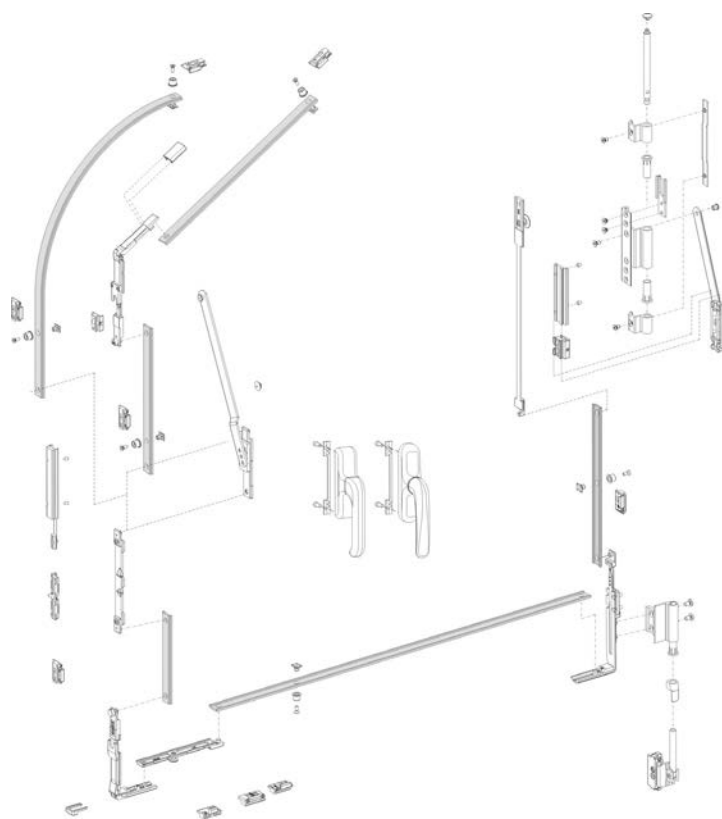
INWARD OPENING TILT-AND-TURN WINDOW

FUTURA 3D
ARCO

FUTURA 3D
FSQ

Complete system for producing casements with tilt-and-turn, arched and sloping windows. The variable angle drive makes it possible to create non-standard doors with an angle of 95–135° between the cremone upright and the upper cross-beam.

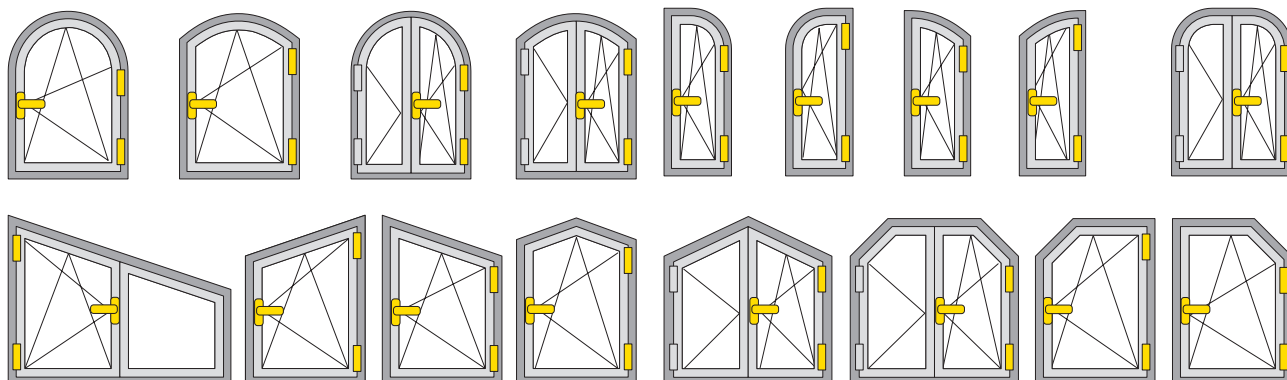
Direction	Adjustment
Height	+ 1.5/ - 0.5 mm
Side	± 1 mm
Lower hinge compression	± 0.3 mm
Sash drop	+ 2 / 0 mm
Striker compression	± 1.8 mm



FUTURA
ARCHED



FUTURA
SLOPING



INWARD OPENING TILT-AND-TURN WINDOW

FUTURA 3D
170 HP Invisible

FUTURA 3D
170 HP Invisible lgc

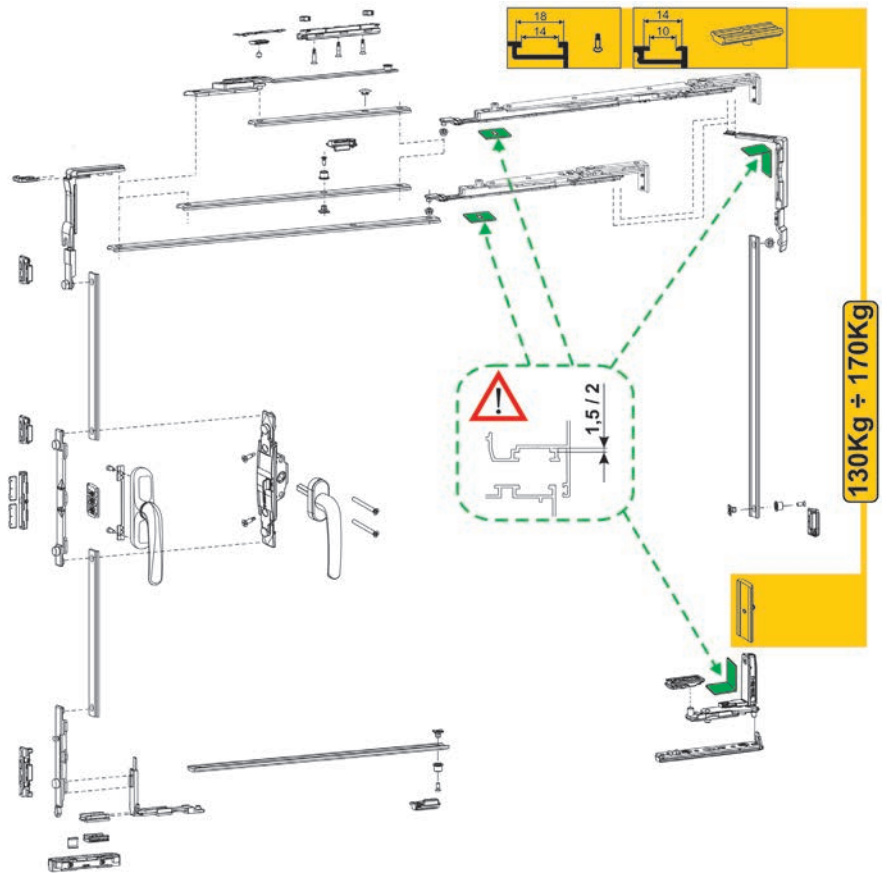
FUTURA 3D 170 Invisible is the system for tilt-and-turn windows with a maximum load capacity of 170 kg.

Available in the basic and Logica versions.

ADJUSTMENTS

The adjustments are micrometric and independent from each other.

Direction	Adjustment
Height	+ 1.5/ - 0.5 mm
Side	± 1 mm
Lower hinge compression	± 0.3 mm
Upper hinge compression	± 1.5 mm
Striker compression	± 1.8 mm
Sash drop	+ 3.5/ - 1.5 mm
Micro-ventilation	+ 3.6/ - 1.8 mm



CERTIFICATION

FUTURA 3D 170 Invisible is certified according to the RAL 607/3 program (classification test pursuant to EN13126-8:2006 plus periodic monitoring of the production process).



RAL-GZ 607/3

TABLE OF MAXIMUM ALLOWABLE GLASS THICKNESS [MM] FOR SASHES UP TO 130 KG

2500	43	39	36	31	27	24	22	20	18	17	15	14	14	13	
2400	45	41	38	32	28	25	23	21	19	17	16	15	14	13	
2300	47	43	39	34	30	26	24	21	20	18	17	16	15	14	
2200	50	45	41	35	31	28	25	23	21	19	18	17	15	15	
2100	50	47	43	37	33	29	26	24	22	20	19	17	16	15	
2000	50	50	46	39	34	30	27	25	23	21	20	18	17	16	
1900	50	50	48	41	36	32	29	26	24	22	21	19	18	17	
1800	50	50	50	44	38	34	31	28	25	24	22	20	19	18	
1700	50	50	50	46	41	36	33	30	27	25	23	22	20	19	
1600	50	50	50	50	43	39	35	32	29	27	25	23	22	19	
1500	50	50	50	50	46	41	37	34	31	29	27	25	22	19	
1400	50	50	50	50	50	44	40	36	33	31	29	25	22	19	
1300	50	50	50	50	50	48	43	39	36	33	29	25	22		
1200	50	50	50	50	50	50	47	43	39	33	29	25			
1100	50	50	50	50	50	50	50	47	39	33	29				
1000	50	50	50	50	50	50	50	47	39	33					
900	50	50	50	50	50	50	50	47	39						
800	50	50	50	50	50	50	50	47							
700	50	50	50	50	50	50	50								
600	430	500	550	600	700	800	900	1000	1100	1200	1300	1400	1500	1600	1700

TABLE OF MAXIMUM ALLOWABLE GLASS THICKNESS [MM] FOR SASHES UP TO 170 KG

2500	43	39	47	40	35	31	28	26	24	22	20	19	18	17	
2400	45	41	49	42	37	33	30	27	25	23	21	20	18	17	
2300	47	43	50	44	39	34	31	28	26	24	22	21	19	18	
2200	50	45	50	46	40	36	32	29	27	25	23	22	20	19	
2100	50	47	50	49	43	38	34	31	28	26	24	23	21	19	
2000	50	50	50	50	45	40	36	33	30	28	26	24	22	19	
1900	50	50	50	50	47	42	38	34	31	29	27	25	22	19	
1800	50	50	50	50	50	44	40	36	33	31	29	25	22	19	
1700	50	50	50	50	50	47	43	39	35	33	29	25	22	19	
1600	50	50	50	50	50	50	45	41	38	33	29	25	22	19	
1500	50	50	50	50	50	50	49	44	39	33	29	25	22	19	
1400	50	50	50	50	50	50	50	47	39	33	29	25	22	19	
1300	50	50	50	50	50	50	50	47	39	33	29	25	22		
1200	50	50	50	50	50	50	50	47	39	33	29	25			
1100	50	50	50	50	50	50	50	47	39	33	29				
1000	50	50	50	50	50	50	50	47	39	33					
900	50	50	50	50	50	50	50	47	39						
800	50	50	50	50	50	50	50	47							
700	50	50	50	50	50	50	50								
600	430	500	550	600	700	800	900	1000	1100	1200	1300	1400	1500	1600	1700

**TABLE OF MAXIMUM ALLOWABLE LOAD CAPACITY [KG]
FOR SASHES UP TO 130 KG**

2500	130	130	130	130	130	130	130	130	130	130	130	130	130	130	130	130
2400	130	130	130	130	130	130	130	130	130	130	130	130	130	130	130	130
2300	130	130	130	130	130	130	130	130	130	130	130	130	130	130	130	130
2200	130	130	130	130	130	130	130	130	130	130	130	130	130	130	130	130
2100	130	130	130	130	130	130	130	130	130	130	130	130	130	130	130	130
2000	130	130	130	130	130	130	130	130	130	130	130	130	130	130	130	130
1900	130	130	130	130	130	130	130	130	130	130	130	130	130	130	130	130
1800	130	130	130	130	130	130	130	130	130	130	130	130	130	130	130	130
1700	130	130	130	130	130	130	130	130	130	130	130	130	130	130	130	130
1600	130	130	130	130	130	130	130	130	130	130	130	130	130	130	122	
1500	130	130	130	130	130	130	130	130	130	130	130	130	130	121	114	
1400	130	130	130	130	130	130	130	130	130	130	130	121	113	106		
1300	130	130	130	130	130	130	130	130	130	130	120	111	104			
1200	130	130	130	130	130	130	130	130	130	119	110	102				
1100	130	130	130	130	130	130	130	130	118	108	100					
1000	130	130	130	130	130	130	117	106	98							
900	130	130	130	130	130	116	104	95								
800	130	130	130	130	114	101	91									
700	130	130	130	111	98	87										
600	430	500	550	600	700	800	900	1000	1100	1200	1300	1400	1500	1600	1700	

**TABLE OF MAXIMUM ALLOWABLE LOAD CAPACITY [KG]
FOR SASHES UP TO 170 KG**

2500	130	130	170	170	170	170	170	170	170	170	170	170	170	170	170	170	170
2400	130	130	170	170	170	170	170	170	170	170	170	170	170	170	170	170	170
2300	130	130	170	170	170	170	170	170	170	170	170	170	170	170	170	170	170
2200	130	130	170	170	170	170	170	170	170	170	170	170	170	170	170	170	170
2100	130	130	170	170	170	170	170	170	170	170	170	170	170	170	170	163	163
2000	130	130	170	170	170	170	170	170	170	170	170	170	170	170	165	154	
1900	130	130	170	170	170	170	170	170	170	170	170	170	170	167	156	146	
1800	130	130	170	170	170	170	170	170	170	170	170	170	170	158	147	138	
1700	130	130	170	170	170	170	170	170	170	170	170	170	160	149	139	130	
1600	130	130	170	170	170	170	170	170	170	170	163	150	139	130	122		
1500	130	130	170	170	170	170	170	170	165	152	140	130	121	114			
1400	130	130	170	170	170	170	170	169	154	141	130	121	113	106			
1300	130	130	170	170	170	170	170	156	142	130	120	111	104				
1200	130	130	170	170	170	170	159	143	130	119	110	102					
1100	130	130	170	170	170	163	144	130	118	108	100						
1000	130	130	170	170	167	146	130	117	106	98							
900	130	130	170	170	149	130	116	104	95								
800	130	130	165	152	130	114	101	91									
700	130	130	142	130	111	98	87										
600	430	500	550	600	700	800	900	1000	1100	1200	1300	1400	1500	1600	1700		

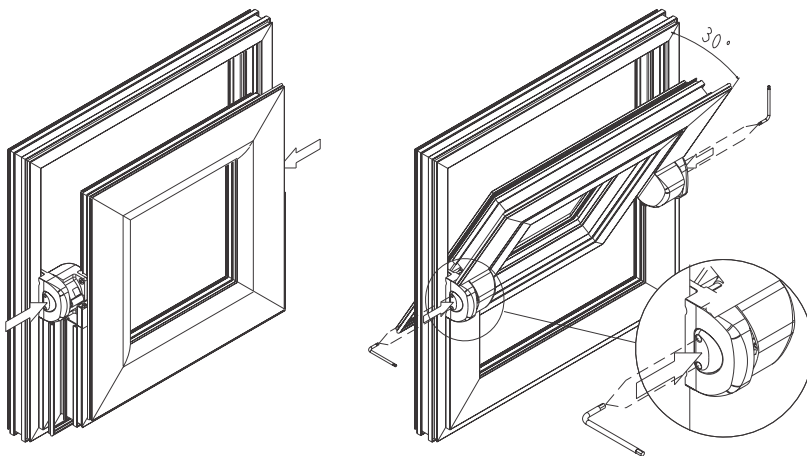
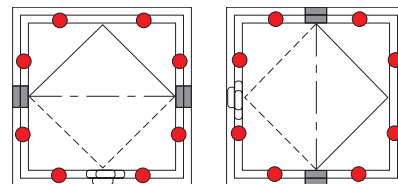
INWARD OPENING TECH PIVOT HINGE

Tech is a pivot hinge for horizontal and vertical pivoting windows with 180° sash rotation.

- Sash opening up to 30°
- Pivot movement
- Unlock button allows window to be opened up to 180° for cleaning
- Compatible with perimeter closings to improve seal against weather agents.

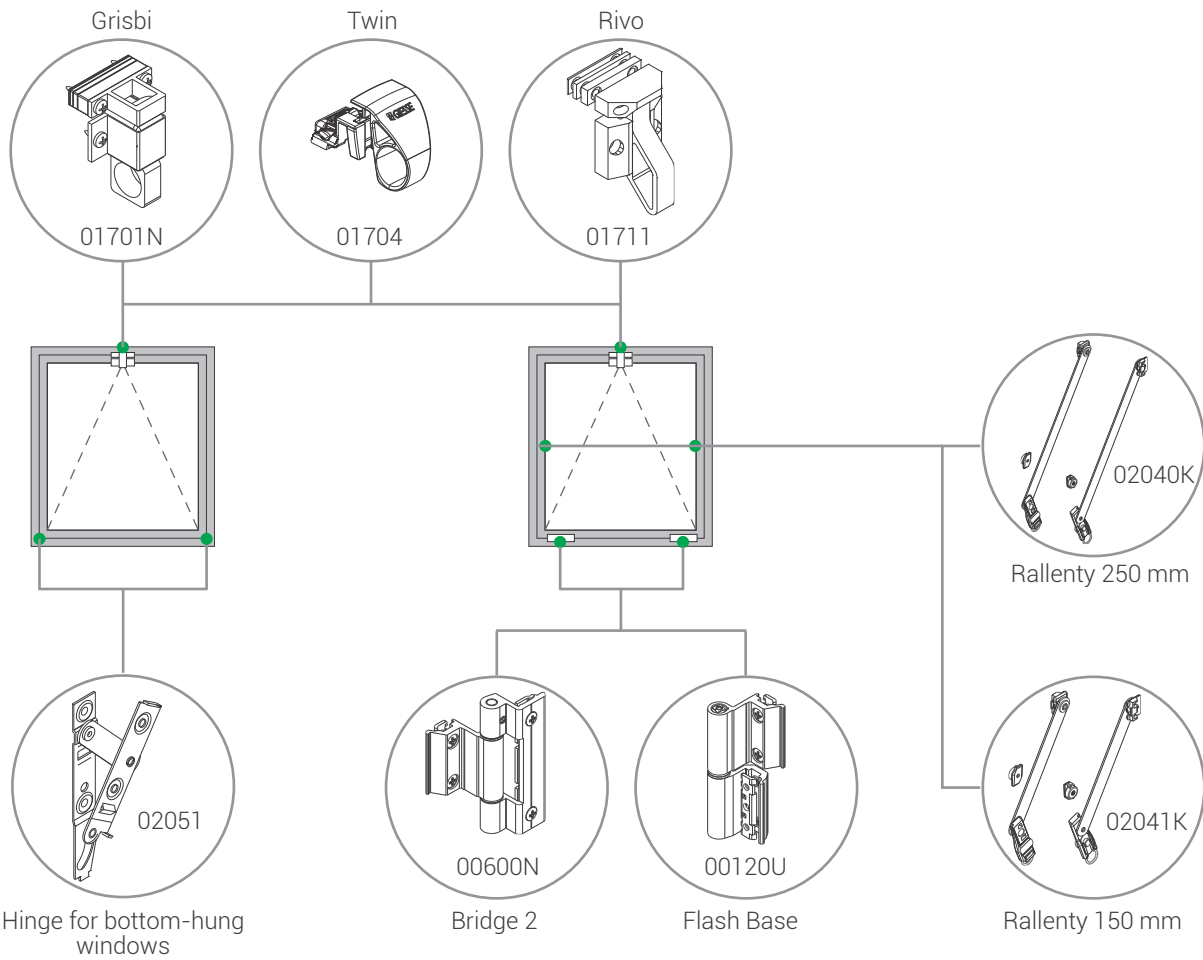
POSSIBLE CASEMENTS

Type	Maximum sash width	Maximum sash height	Maximum sash weight
Horizontal pivoting window	1600 mm	2200 mm	120 kg
Vertical pivoting window	1600 mm	2200 mm	100 kg

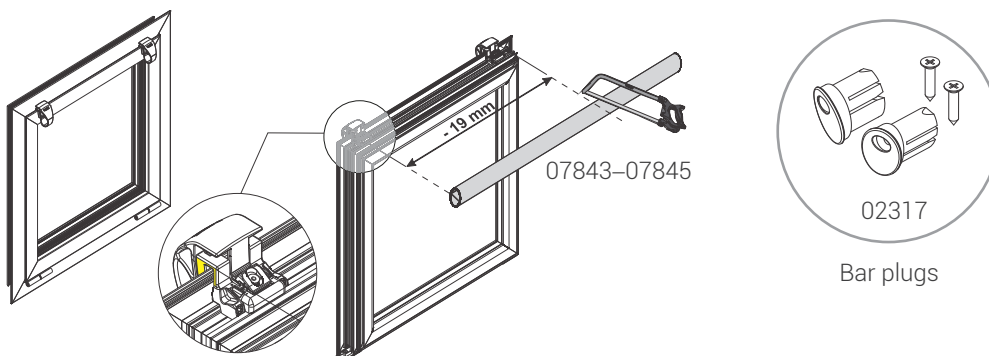




INWARD OPENING HARDWARE FOR BOTTOM-HUNG WINDOWS



CATCH COMBINED WITH BAR



INWARD OPENING CLAMP HINGES



FLASH BASE

- Supplied **pre-assembled** for fast installation
- Sash plate with special tothing for maximum seal on profile (patented **RAPID** fixing)
- Available in RAL and Trend painted finishes
- For window sashes up to **75 kg**
- Available in **3 leaves** for sashes up to **100 kg**



MAX
75 KG



MAX
100 KG

BRIDGE 2

- Supplied pre-assembled
- Sash plate with special tothing for maximum seal on profile (patented **RAPID** fixing)
- Recommended for applications that have particular transverse stresses on the axis of the pins, such as in the case of large window sashes with inward or outward opening
- For window sashes up to **100 kg**
- If used for sashes with bottom-hung opening, Bridge 2 has a load capacity of up to **250 kg**.



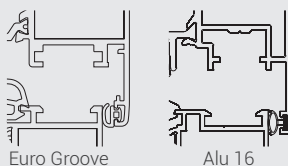
MAX
100 KG

DOOR CLAMP HINGES

CELERA

Celera is supplied with pre-assembled RAPID fixing plates, so it is quickly installed when the casement is set in place and the sash is installed.

- For sashes up to **100 kg** with 2 hinges and up to **120 kg** with 3 hinges.
- Side adjustment ± 1 mm
- CE marking pursuant to EN1935

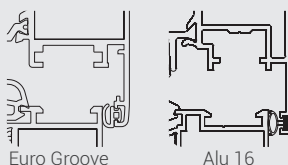


MAX
120 KG

LINEA 3D

Linea 3D is the clamp hinge that **allows the hinge bodies to remain perfectly aligned**, in any side adjustment position.

- For sashes up to **120 kg** with 2 hinges and up to **150 kg** with 3 hinges.
- For intensive use doors
- 3D hinge adjustment
 - Side ± 2.0 mm
 - Height -2 to +4 mm with the adjustment plate
 - Compression ± 0.5 mm
- Quick and easy assembly
- Tested to over 1,000,000 cycles in compliance with the EN1191 standard
- CE marking pursuant to EN1935

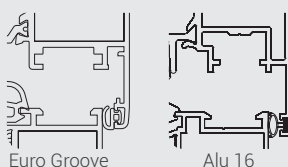


MAX
150 KG

FLASH XXL

Flash XXL is the ideal clamp hinge for large, very heavy doors that are subject to intensive use.

- For sashes up to **160 kg** with 2 hinges and up to **180 kg** with 3 hinges.
- For intensive use doors
- Hinge adjustment
 - Side ± 1.0 mm
 - Height -2 to +4 mm
- Quick and easy assembly
- CE marking pursuant to EN1935



MAX
180 KG



DOOR PANIC EXIT DEVICES

GS AP001

- Panic exit device for **push bar** type emergency doors
- Available in **three versions**: side, up-down and modular
- **Certified** to the UNI EN 1125:2008 standard and approved for CE marking, with the highest performance levels
- **Reversible**
- Applicable on **fire-rated doors** using the specific strikers in stainless steel (F version)
- AP001 is suitable for panic doors with one or two sashes.

GS AP001

EN 1125: 2008

3	7	7	0	1	4	2	2	A	A
---	---	---	---	---	---	---	---	---	---

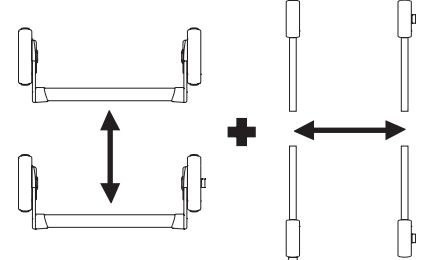
GS AP001 F

EN 1125: 2008

3	7	7	B	1	4	2	2	A	A
---	---	---	---	---	---	---	---	---	---



GS AP001



GS AP002

- Panic exit device for **touch bar** type emergency doors
- Available in **three versions**: side, up-down and modular
- **Certified** to the UNI EN 1125:2008 standard and approved for CE marking, with the highest performance levels
- **Supplied pre-assembled** with activation bar
- **Fast, easy installation**: just set it onto the door and fasten it in place with its screws.
- **Reversible**
- Available in **3 lengths** (840 mm, 1170 mm and 1300 mm)
- Applicable on **fire-rated doors** using the specific strikers in stainless steel (F version)
- AP002 is suitable for panic doors with one or two sashes.

GS AP002

EN 1125: 2008

3	7	7	0	1	4	2	2	A	A
---	---	---	---	---	---	---	---	---	---

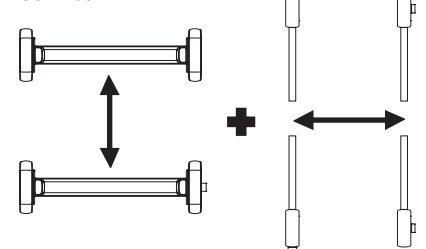
GS AP002 F

EN 1125: 2008

3	7	7	B	1	4	2	2	A	A
---	---	---	---	---	---	---	---	---	---



GS AP002



GS AP100

- Panic exit device for **push bar** type emergency doors
- With **single or multipoint locks**
- **Certified** to the UNI EN 1125:2008 standard and approved for CE marking, with the highest performance levels
- **Reversible**
- By pressing on the device activation bar, the door can open from the inside even when locked by key, allowing it to function as an emergency exit.

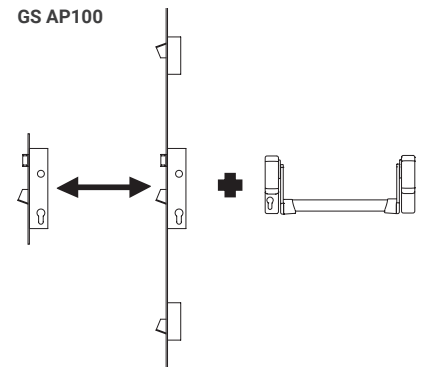
GS AP100

EN 1125: 2008

3	7	6	0	1	4	2	1	A	B
---	---	---	---	---	---	---	---	---	---



GS AP100



GS AP200

- Panic exit device for **touch bar** type emergency doors
- With **single or multipoint locks**
- **Certified** to the UNI EN 1125:2008 standard and approved for CE marking, with the highest performance levels
- **Reversible**
- By pressing on the device activation bar, the door can open from the inside even when locked by key, allowing it to function as an emergency exit.

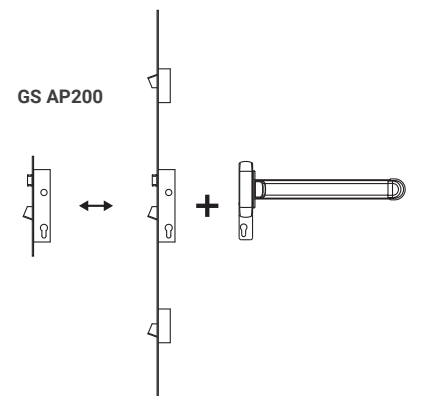
GS AP200

EN 1125: 2008

3	7	7	0	1	4	2	2	B	B
---	---	---	---	---	---	---	---	---	---



GS AP200



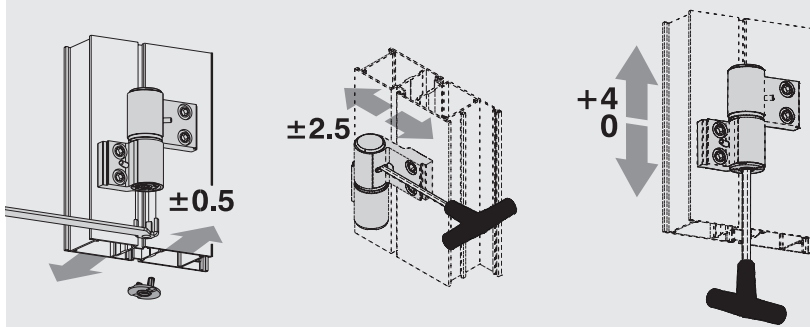
DOOR FRONT-FITTING HINGES

DOMINA HP

Domina HP is the front-fitting hinge that delivers excellent performance and reliability.

It is ideal for use with large, heavy aluminum doors for intensive use (use category 4 – Severe duty) with high resistance to fatigue and wear (durability grade 7 – 200,000 test cycles).

- For intensive use doors
- For sashes up to 200 kg
- Adjustable in three directions even after installation
- Quick and easy assembly
- CE marked compliant with EN1935



Use category	4	EN 1935:2002	1=light, 2=moderate, 3=heavy, 4=severe
Test cycles	200,000	EN 1935:2002	3=10,000 cycles, 4=25,000 cycles 7=200,000 cycles
Door mass	100 kg	EN 1935:2002	0-7 e.g. 7=160 kg
Fire resistance	1	EN 1634-1	0=not suitable, 1=suitable
Security	1	EN 1935:2002	1=safe use
Corrosion resistance	240	EN 1935:2002	0-4 e.g. 4=very high resistance
Burglar resistance	1	EN 1935:2002	0=not suitable, 1=suitable
Hinge Grade	12	EN 1935:2002	1-14 e.g. 14=best overall specifications
Harmful substances	Passed	Note 1 in ZA.1 EN 1935:2002 Reg. EU no. 1907/2006 (Reach)	

The DOMINA HP and DOMINA HP COVER hinges have obtained the SKG burglar-proof mark with two and three stars compliant with the BRL 3104 standard.



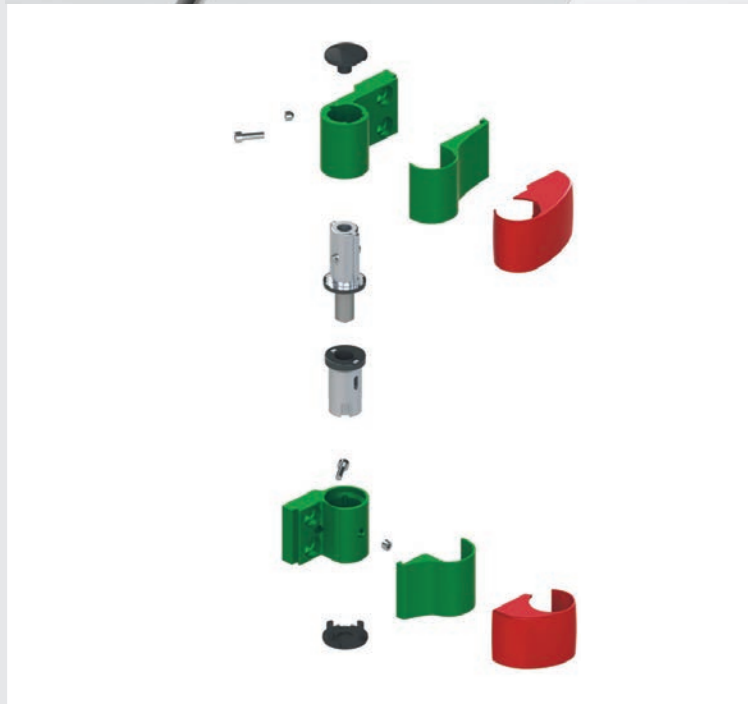
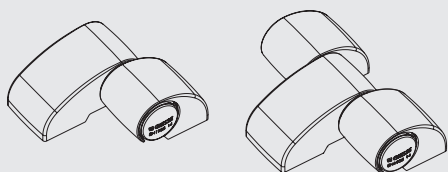
DOMINA HP COVER

Domina HP is also available in the Cover version for customized door styling thanks to its unique, modern cover design.

Domina HP in the Cover version has the same components as the Domina HP hinge body, which is used in combination with separately purchased covers.

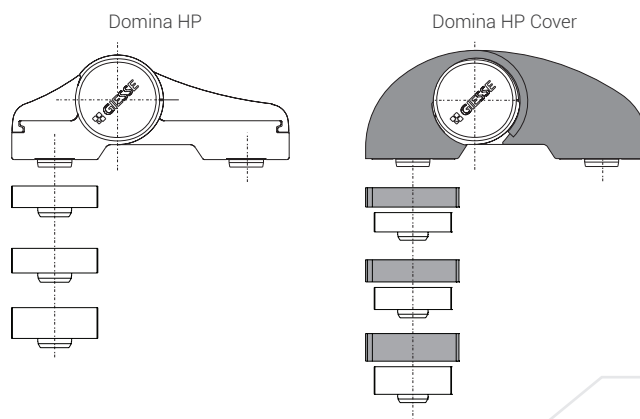
The covers are available in different paint finishes, or can be painted autonomously in the desired color.

The Cover version therefore retains all the technical features and performance of the Domina HP hinge, but allows the available finishes to be differentiated quickly and optimally.



UNIVERSAL APPLICATION

When combined with their respective hinges in the flush version, the extruded aluminum shims in 7, 8, 9 or 10 mm, available for the Domina HP and Domina HP Cover versions, allow the application of various step profiles available on the market. The possibility of combining hinge and shim to obtain a step version allows optimized use of products in stock. Like the hinge, the shim also includes a steel centering bushing, which increases profile grip.



DOOR FRONT-FITTING HINGES

DOMINA CLASSIC

Domina Classic is the front-fitting hinge offering high performance and reliability. IT IS ideal for use with large, heavy aluminum doors for intensive use (use category 4 – severe duty) with high resistance to fatigue and wear (durability grade 7 – 200,000 test cycles).

Domina Classic is CE marked compliant with EN1935.

- For intensive use doors
- For sashes up to 180 kg
- Adjustable in three directions even after installation
- Quick and easy assembly
- CE marked compliant with EN1935



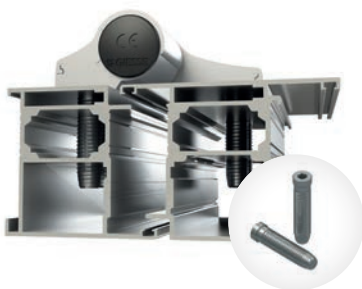
FIXING SYSTEMS

FOR DOMINA HP, HP COVER AND CLASSIC

Domina HP, Cover and Classic have three different fixing systems, to be chosen based on the needs associated with the application: traditional type counterplate fixing, direct M12 screws for quick fixing (for thermal break profiles) and expansion dowels (for single sealed unit profiles).

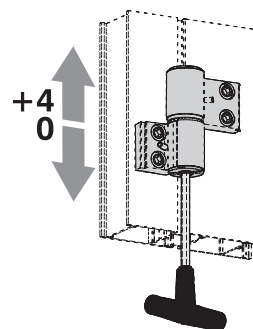
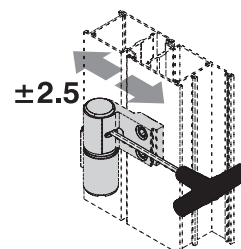
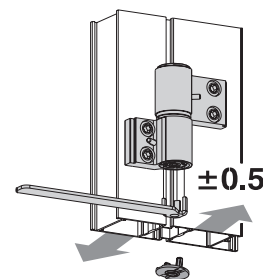
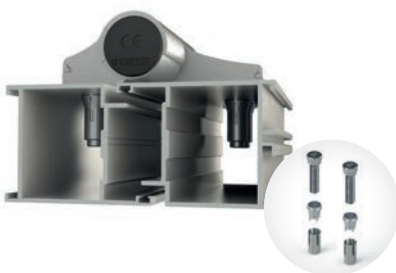
Fixing the hinge to the profile is selected according to the performance required and the type of application.

Traditional type fixing
with counterplate



Quick-fit with
M12 screws

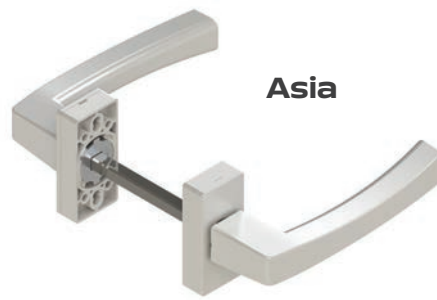
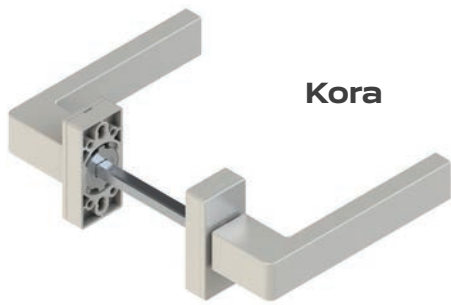
Quick-fit with
expansion dowels







DOOR HANDLES



Giese double handles are the ideal solution, combining stylish design with high performance.

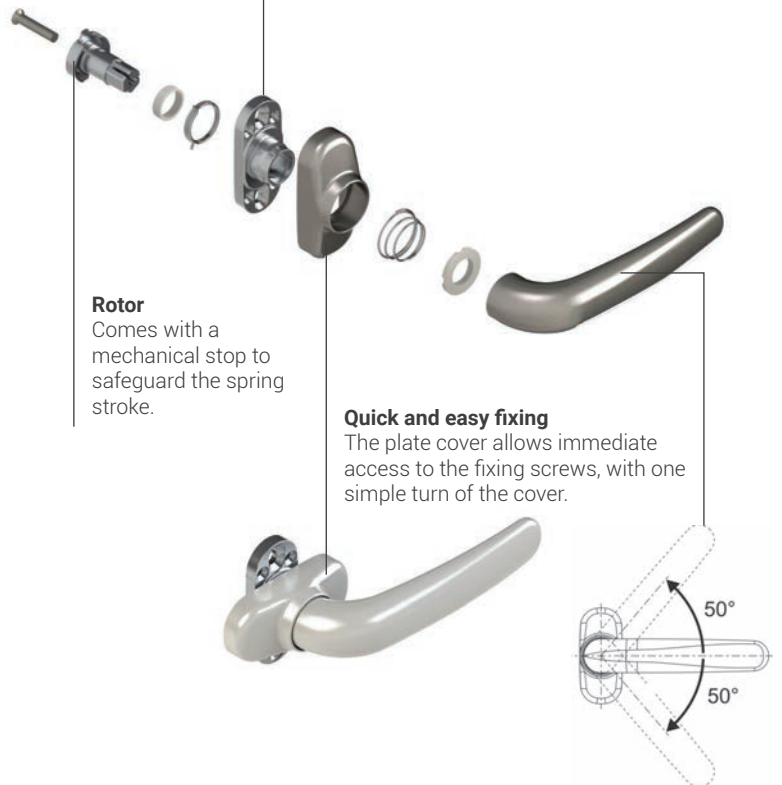
- Full functionality even in **intensive conditions**, such as in public buildings and hospitals
- Tested to **200,000 cycles** pursuant to the **EN1906 standard**
- Fixing base with **double C/C distance** from 43 to 50 mm
- Also available with **Base Primer** pre-treatment that allows autonomous painting in the desired finish.



For Giese doors, combining the rosette cylinder cover with the same geometry and finish is possible.

Fixing base

- C/C from 43 to 50 mm
- 4 holes for additional screws in case of handle replacement



DOOR LOCKS

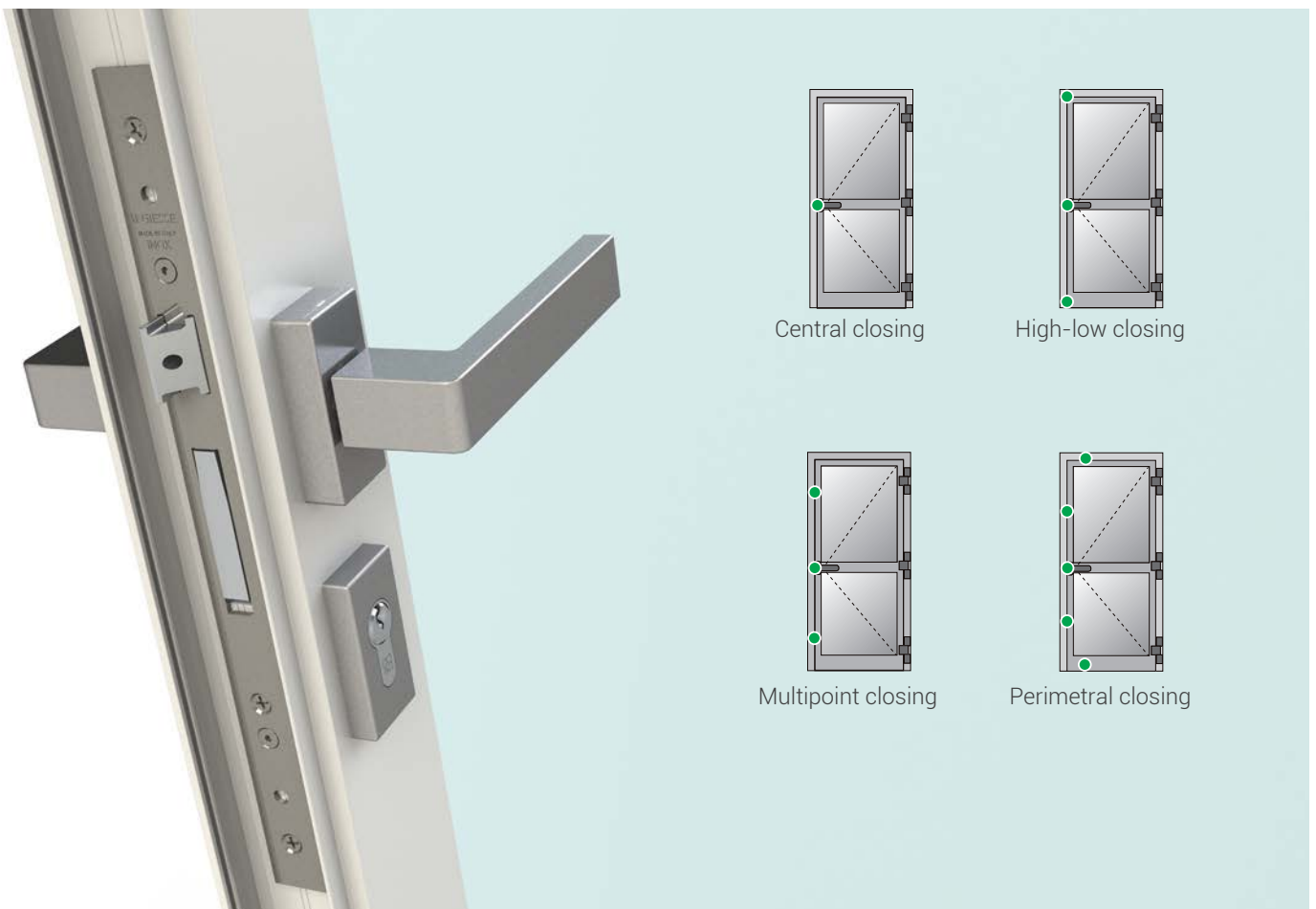
Giesse locks are offered with different types of operation. In **spring latch locks**, closing is in one central point corresponding to the spring latch and bolt; the latch is operated by the cylinder and the handle square spindle, the bolt is operated by the cylinder using the key.

In **top-bottom locks**, in addition to the spring latch and bolt, it is also possible to close the latches on the corners between the upright and the cross-beams thanks to the bolt tips.

Roller and bolt locks are ideal for doors for commercial use, where opening must be frequent, easy and quick, but which can be closed by means of the bolt by operating the cylinder with the key.

Perimeter locks, which can be combined with Euro Groove profiles, ensure the best security in **balcony doors** allowing effective closing both along the upright and along the lower and upper cross-beams of the door. Perimetral closing is activated by moving the double handle upwards.

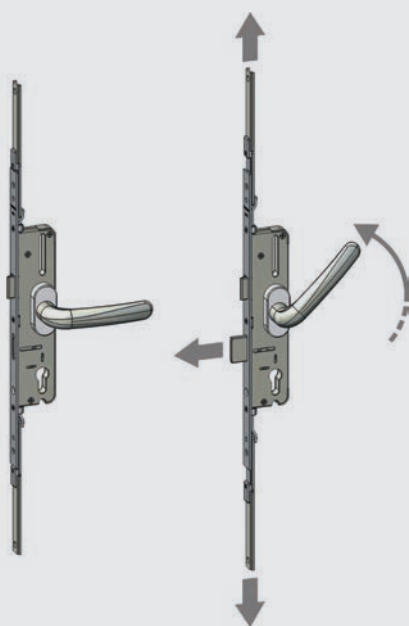
If **door profiles** are used, it is possible to opt for different locking points on the upright thanks to the use of multipoint locks with a U-shaped or flat front, to be chosen according to the type of profile.



DOOR PERIMETER LOCK

Lock compatible with European profile cylinders, available in versions with or without bolt.

Coupled with the polyamide rod, via the specific connection adapters, the lock enables multipoint closure by appropriately choosing the number and position of the locking points on the various sides of the door.

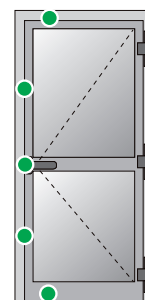


When the handle is turned upwards, the lock activates the multipoint locking while simultaneously moving:

- The upper rod upwards
- The bolt comes out
- The lower rod downwards

When the cylinder is key-locked, the handle movement is impeded and the door cannot be opened.

The function of the key is only to lock/unlock the handle rotation.



Giesse locks are paired with Giesse counterplates and cylinders. For a look at the complete range of counterplates and cylinders, please see the Giesse General Technical Catalog, which is also available online at www.giesse.it

DOOR LOCKS

TOP-BOTTOM LOCKS FOR EURO GROOVE PROFILES

Top-bottom locks for Euro Groove profiles with central closing with spring latch and bolt and top-bottom fastening with bolt tips.

The bolt is tilting and burglar-proof, the spring latch is reversible (right and left hand) adjustable from 10 to 15 mm.

- Cylinder handle C/C distance 85 mm
- Bolt with thickness of 10 mm and minimum protrusion of 24 mm
- Adjustable spring latch protrusion from 10 to 15 mm
- Stroke 15.5 mm



LOCK WITH ROLLER AND BOLT

Locks with door profiles equipped with burglar-proof tilting bolt and protrusion adjustable roller.

- Bolt with thickness of 10 mm and minimum protrusion of 24 mm
- Roller protrusion adjustable from 4 mm to 13 mm



SPRING LATCH LOCK

Lock for door profiles with central closing, equipped with a burglar-proof tilting bolt and reversible spring latch (right and left hand) adjustable from 10 to 15 mm.

- Cylinder handle C/C distance 85 mm
- Bolt with thickness of 10 mm and minimum protrusion of 24 mm
- Adjustable spring latch protrusion from 10 to 15 mm



LOCKS WITH SPRING LATCH AND SHIFTING BOLT

Lock for door profiles with shifting bolt and reversible spring latch (right and left hand).

- Cylinder handle C/C distance 85 mm
- Single-operated 15 mm shifting bolt with thickness of 10 mm
- Spring latch adjustable from 9 to 13 mm



FLAT FRONT MULTIPOINT LOCK

Multipoint lock with central lock and side diverters. Flat front plate geometry. The lock is equipped with a burglar-proof tilting bolt and reversible spring latch (right and left hand).

- Cylinder handle C/C distance 85 mm
- Bolts with thickness of 10 mm and minimum protrusion of 24 mm
- Spring latch protrusion 10 mm



MULTIPOINT DOOR LOCK WITH U-SHAPED FRONT

Multipoint lock with central lock and side diverters. U-shaped front plate geometry. The lock is equipped with a burglar-proof tilting bolt and reversible spring latch (right and left hand).

- Cylinder handle C/C distance 85 mm
- Bolts with thickness of 10 mm and minimum protrusion of 24 mm
- Spring latch protrusion 10 mm



DOOR BOLTS

TOTEM



Totem is the one-way bolt with an extendable lever thanks to the specific supplied rod.

- High break-in security
- Bolt tip stroke 21 mm
- Reversible and extendable
- Compression adjustment ± 0.6 mm

MAYA



Maya is the one-way bolt with lever suitable for small-sized doors. Maya comes with a modular cover in painted finishes.

- High break-in security
- Bolt tip stroke 21 mm
- Available in four lengths
- Custom finishes

PESOS



Pesos is the one-way recessed lever bolt. Guard cover is available in various painted finishes, anodized and Trend.

- High break-in security
- Bolt tip stroke 18 mm
- Reversible
- Custom finishes

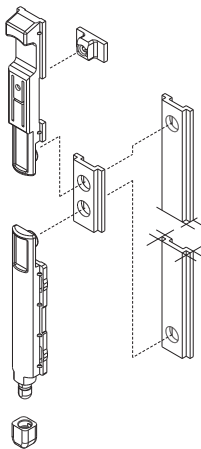
BULL



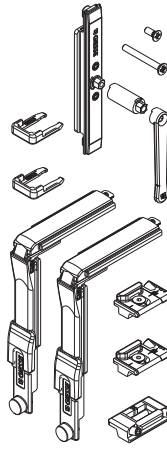
Bull is the one-way front-fitting bolt. Guard cover is available in various painted finishes, anodized and Trend.

- High break-in security
- Bolt tip stroke 40 mm
- Reversible
- Available also in key version
- Custom finishes

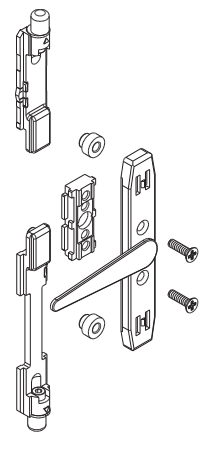
GIAP



PERIMETRAL CLOSING



TWO-WAY



PRIMA LINE



SUPRA 7



WINDOW HANDLE



WINDOW HANDLE WITH KEY



HANDLE FOR DOOR



CREMONE



CREMONE WITH KEY



WINDOW HANDLE FOR TILT AND SLIDE SASH



CW CREMONE



WINDOW HANDLES FOR LIFT AND SLIDE

KORA LINE



SUPRA 7



WINDOW HANDLE



WINDOW HANDLE



HANDLE FOR DOOR



WINDOW HANDLE FOR TILT AND SLIDE SASH



WINDOW HANDLES FOR LIFT AND SLIDE



ASIA LINE



SUPRA 7



WINDOW HANDLE



HANDLE FOR DOOR



CREMONE



CREMONE WITH KEY



WINDOW HANDLE FOR TILT AND SLIDE SASH



WINDOW HANDLES FOR LIFT AND SLIDE

EURO LINE



CREMONE



CREMONE WITH KEY



HANDLE FOR DOOR



CW CREMONE

ARIA LINE



SUPRA 7





SCHLEGELGIESSE LABORATORY

RESEARCH, DESIGN AND TESTING

Here we research, develop new products and improve existing ones. The SchlegelGiesse laboratory is where our ideas are forged.

This is where they take shape and become reality. Created in 1995, it is a specialized area that supports **research and design with a view to new product development**.

The SchlegelGiesse laboratory has a **testing system** that uses our own software to oversee the different test and classification procedures according to the most widespread **international standards**.

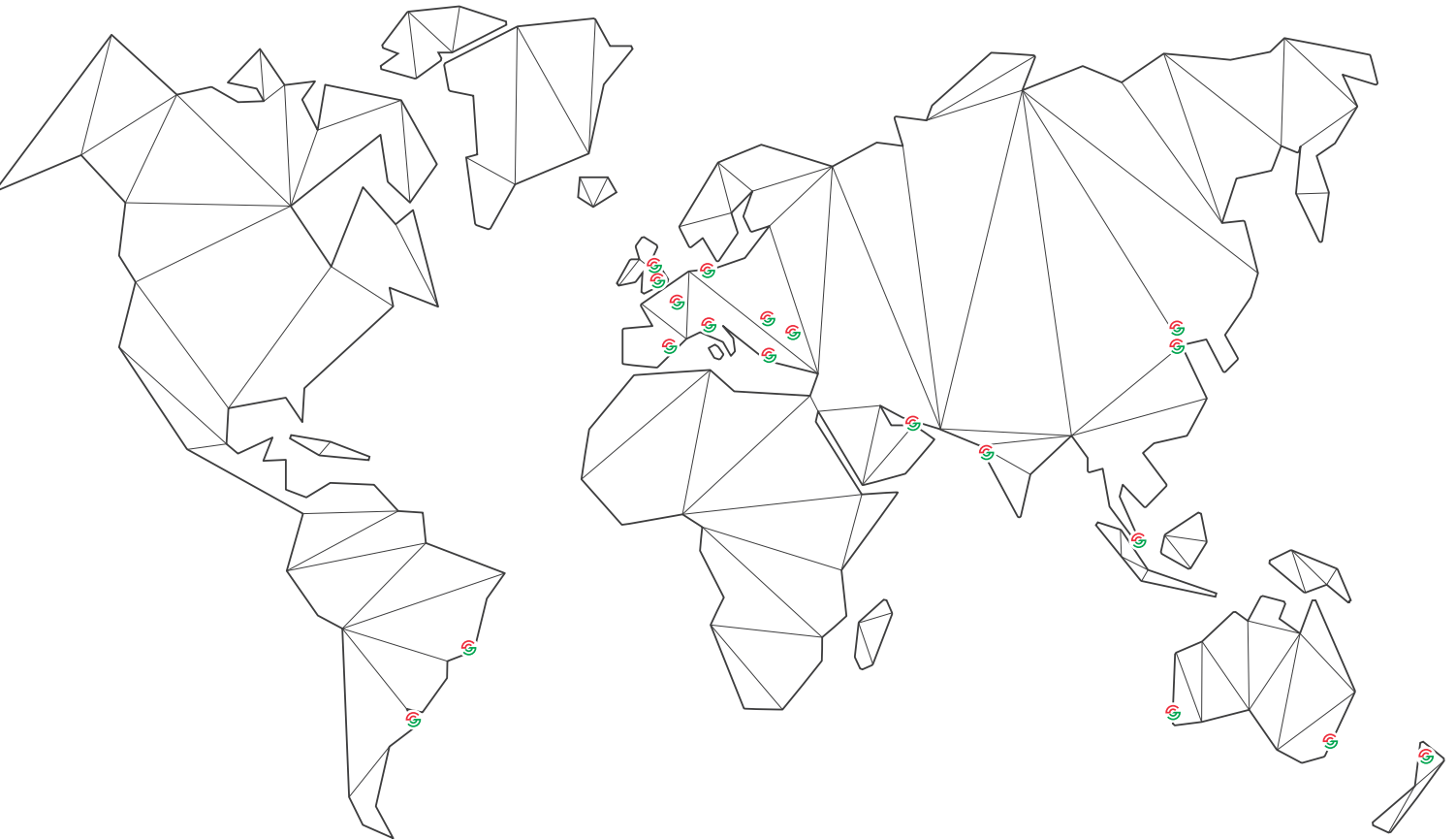
Our laboratory's main function is to **experiment** with the best solutions for hardware and closing systems during the product development stage. In order to offer the best service to our customers and partners, we can also run official tests according to **CE standards on windows and doors** (EN 14351), in collaboration with the notified European authority no. 1994 – IRCCOS in Milan.

Following an **expertise** phase on the sample, we proceed to carry out tests at our laboratory in the presence of the Notified Authority, which then issues the official report (ITT).

We have a test area specially equipped with state-of-the-art machinery to run **functional and mechanical tests at a constant rate**, in order to test the durability of hinges, handles, pulleys, tilt-and-turn sashes, arms with variable geometry and other systems in accordance with the most stringent international technical standards. We also have a **room for testing saline fog corrosion**.



A GLOBAL PARTNER



SCHLEGELGIESSE
MADE FOR THE FUTURE

GIESSE S.p.A.

Via Tubertini 1, 40054 Budrio (BO), Italy

Tel: +39 051 8850000 • Fax: +39 051 8850001 • email: info.it@schlegelgiesse.com



U0823101 - 05/2019

www.schlegelgiesse.com